

PUBLIC IMPROVEMENT PLANS FOR:

ANKENY, IOWA

NOT TO SCALE



1600 CORPORATE WOODS, LLC
CONTACT: BERNARD BAKER III
4224 HUBBELL AVENUE
DES MOINES, IOWA 50317
PH. (515) 299-4200

CIVIL DESIGN ADVANTAGE
CONTACT: BRAD KUEHL
3405 SE CROSSROADS DRIVE, SUITE C
GRIMES, IOWA 50111
PH: 515-369-4400
FX: 515-369-4410

1600 SE CORPORATE WOODS DRIVE

| | |
|-------------------|----------|
| FIRST SUBMITTAL: | 08/26/16 |
| SECOND SUBMITTAL: | 09/19/16 |
| THIRD SUBMITTAL: | 10/03/16 |
| FOURTH SUBMITTAL: | 12/21/16 |
| FIFTH SUBMITTAL: | 12/30/16 |

| NO. | DESCRIPTION |
|-----|-------------------------------------|
| 1 | TITLE SHEET |
| 2 | TYPICAL SECTIONS, DETAILS AND NOTES |
| 3 | PLAN SHEET -- DIVISION 1 |
| 4 | PLAN SHEET -- DIVISION 2 |
| 5 | JOINTING LAYOUT |

BUL#2 CUT X ● NE CORNER OF BRIDGE ON I-35
& DELAWARE AVE.
ELEVATION=946.06

BUL#2 ARROW ON HYDRANT EAST SIDE OF FOUR
MILE DRIVE NORTH OF DRIVE TO HOUSE #5703
ELEVATION=877.93

BUL#3 ARROW ON HYDRANT ● NW CORNER OF
CORPORATE WOODS DRIVE & 82ND AVENUE.
ELEVATION=873.83

ANY UTILITIES SHOWN HAVE BEEN LOCATED FROM FIELD SURVEY AND RECORDS OBTAINED BY THIS SURVEYOR. THE SURVEYOR MAKES NO GUARANTEE THAT THE UTILITIES SHOWN COMPRISE ALL THE UTILITIES IN THE AREA, EITHER IN SERVICE OR ABANDONED. THE SURVEYOR FURTHER DOES NOT WARRANT THAT THE UTILITIES SHOWN ARE IN THE EXACT LOCATION SHOWN.

THIS PROJECT REQUIRES AN OWM NPDES PERMIT #2. CIVIL DESIGN ADVANTAGE WILL PROVIDE THE PERMIT AND INITIAL STORM WATER POLLUTION PREVENTION PLAN. THE CONTRACTOR SHALL BE RESPONSIBLE FOR UPDATING THE STORM WATER POLLUTION PREVENTION PLAN THROUGHOUT CONSTRUCTION AND MEETING LOCAL, STATE, AND FEDERAL REQUIREMENTS.

CIVIL DESIGN ADVANTAGE
3405 SE CROSSROADS DR, SUITE G GRIMES, IOWA 50111
PH: (515) 369-4400 Fax: (515) 369-4410
PROJECT NO. 1602.025

PROPOSED
SECTION LINE
CENTER LINE
RIGHT OF WAY
PERMANENT EASEMENT
TEMPORARY EASEMENT
USE AS CONSTRUCTED

----- R/W -----
----- P/E -----
----- TA -----

(UAC)

[illegible]

THE 2017 EDITION OF THE SUDAS STANDARD SPECIFICATIONS AND THE CITY OF ANKENY SUPPLEMENTAL SPECIFICATIONS FOR PUBLIC IMPROVEMENTS SHALL APPLY TO ALL WORK ON THIS PROJECT UNLESS OTHERWISE NOTED.



MINNAPAC

I HEREBY CERTIFY THAT THIS ENGINEERING DOCUMENT WAS PREPARED BY ME OR UNDER MY DIRECT PERSONAL SUPERVISION AND THAT I AM A DULY LICENSED PROFESSIONAL ENGINEER UNDER THE LAWS OF THE STATE OF MINNESOTA.

R. DEAN ROUGHAN, P.E.

DATE _____

MY LICENSE NUMBER, DATE 5 DECEMBER 31, 2017

PAID BY CHECKS CONTROL BY THIS SEAL:

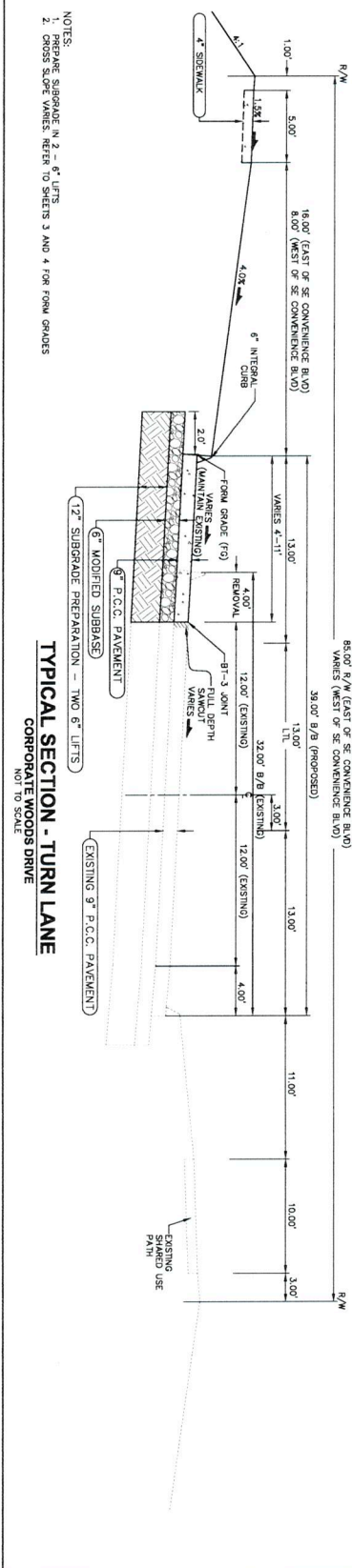
SHEETS 1-5

| ITEM NO. | ITEM DESCRIPTION | UNIT | DIVISION | DIVISION 2 | TOTAL |
|----------|--|------|----------|------------|-------|
| 1 | CLASS 10 EXCAVATION | LS | 0.5 | 0.5 | 1 |
| 2 | PAVEMENT REPAIR | SF | 242 | 614 | 856 |
| 3 | SIDWALK REPAIR | SF | 311 | 267 | 578 |
| 4 | TRAFFIC SIGN RELOCATION | EA | 1 | 1 | 2 |
| 5 | ACQUIST FIBER HANGHOLE | EA | 0 | 1 | 1 |
| 6 | ACQUIST SIGN HANGHOLE, JUNIOR | EA | 0 | 1 | 1 |
| 7 | ACQUIST SIGN HANGHOLE, JUNIOR | EA | 0 | 2 | 2 |
| 8 | SIDWALK PREPARATION | SF | 533 | 1213 | 1746 |
| 9 | WOODEN SUBBASE, 6 INCHES | CY | 89 | 183 | 272 |
| 10 | PAVEMENT, PCC, 9 INCH | SF | 446 | 969 | 1415 |
| 11 | PAVEMENT, DRIVEWAY APPROACH, PCC, 9 INCH | SF | 0 | 109 | 109 |
| 12 | SIDWALK, PCC, 4 INCH | SF | 210 | 314 | 524 |
| 13 | DETACHABLE WARNING PANELS | SF | 10 | 24 | 34 |
| 14 | CONVENTIONAL SEEDING AND STRAW MULCHING | LS | 0.5 | 0.5 | 1 |
| 15 | PAINTED PAVEMENT MARKINGS, DURABLE | LS | 0.5 | 0.5 | 1 |

| ITEM NO. | DESCRIPTION |
|----------|--|
| | <p>THE 2017 EDITION OF THE SDGS STANDARD SPECIFICATIONS AND THE CITY OF ANGELES SUPPLEMENTAL SPECIFICATIONS SHALL BE USED. ANY CHANGES TO THE SDGS STANDARD SPECIFICATIONS SHALL APPLY TO ALL WORK ON THIS PROJECT UNLESS OTHERWISE NOTED.</p> <p>ALL REFERENCES TO SECTIONS AND HUNDRES ARE TO THE SDGS STANDARD SPECIFICATIONS FOR PUBLIC IMPROVEMENTS.</p> <p>1. EXCAVATION INCLUDES ALL WORK NECESSARY TO ACHIEVE PROPER GRADES AS SHOWN IN THE PLANS.</p> <p>2-3. CONTRACTOR SHALL REMOVE EXISTING PAVEMENT AND SEWMAK AS NOTED ON THE PLAN, CURB AND GUTTER MATERIAL SHALL BE REUSED FROM THE PROJECT AND RECOVERED FROM THE EXCAVATION. CONTRACTOR SHALL RELOCATE EXISTING TRAFFIC SIGNS AS SHOWN ON THE PLANS. PLACEMENT OF RELOCATED SIGNS SHALL BE COORDINATED WITH THE CITY. CONTRACTOR SHALL VERIFY ITEMS REQUIRING RELOCATION PRIOR TO BIDDING.</p> <p>4. CONTRACTOR SHALL COORDINATE WITH APPROPRIATE UTILITY AND ADJUST RM OF EXISTING FIBER HANDHOLE AS SHOWN ON THE PLANS.</p> <p>5. CONTRACTOR SHALL ADJUST RM OF THE STORM MANHOLES AS SHOWN ON THE PLANS.</p> <p>6-7. REFER TO THIS SHEET WITH TECHNICAL SPECIFICATIONS AND DETAILS FOR LOCATIONS AND THICKNESS. RECYCLED PCC WILL NOT BE ALLOWED FOR ANY PORTION THEREOF.</p> <p>8-9. REFER TO PG. 2010101 - JOINTS FOR JOINT DETAILS. REFER TO INTERSECTION SHEETS FOR JOINTING.</p> <p>10-11. TYPICAL 'C' JOINT SPACING IS 15 FEET.</p> |

1. WHERE PUBLIC UTILITY FACILITIES ARE SHOWN AS EXISTING ON THE PLANS OR ENCOUNTERED WHILE THE CONSTRUCTION OF THE PROJECT IS IN PROGRESS, THE CONTRACTOR SHALL BE RESPONSIBLE FOR OBTAINING THE NECESSARY PERMITS, REPAIRS AND PROTECTION OF SUCH FACILITIES. THE CONTRACTOR SHALL HAVE ACCESS TO THESE FACILITIES FOR NECESSARY REPAIRS AND PROTECTION AND THEREFORE SHALL BE RESPONSIBLE FOR THE PROTECTION OF SUCH FACILITIES. IF IT IS DETERMINED THAT THERE ARE NO OTHERS, THE EXISTENCE OF WHICH IS PRESENTLY NOT KNOWN OR SHOWN, IT IS THE CONTRACTOR'S RESPONSIBILITY TO LOCATE SUCH FACILITIES. THE CONTRACTOR SHALL BE RESPONSIBLE FOR THE PROTECTION OF SUCH FACILITIES. ADDITIONAL COMPENSATION WILL BE ALLOWED TO THE CONTRACTOR FOR ANY INTERFERENCE OR DELAY CAUSED BY SUCH WORK.
2. THE CONTRACTOR IS REQUESTED TO NOTIFY THE UTILITY ONE-CALL SERVICE AT 800-393-8899 AT LEAST 48 HOURS PRIOR TO LOCATING UNDERGROUND UTILITIES ON THE PROJECT.
3. PRIOR TO CONSTRUCTION, CONTRACTOR SHALL NOTIFY (72 HRS NOTICE) THE FOLLOWING:
 - A. CITY OF MANNING
 - B. MANNING WATER & SEWER DEPARTMENT
 - C. OWNERS
 - D. ONE-CALL SERVICE ADVANTAGE
4. THE CONTRACTOR IS RESPONSIBLE FOR RELOCATING ANY AREAS OF PAVEMENT OR SIDEWALK NOT TO BE REMOVED THAT IS IN THE WAY OF THE CONSTRUCTION OF THE PROJECT AND BE RESPONSIBLE.
5. THE CONTRACTOR SHALL BE RESPONSIBLE FOR THE PROTECTION OF ANY EXISTING UTILITIES, STRUCTURES, AND SUBINFRASTRUCTURES INVOLVED IN THE PROJECT, INCLUDING STATIONS OF CONSTRUCTION DEVICES.
6. THE CONTRACTOR SHALL MAINTAIN NECESSARY MOTIFER TO THE CONSTRUCTION AREA AND MAINTAIN ROADS TO PREVENT THE SPREAD OF DUST.

CONFONALIE MOOL
NOT TO SCALE



UTILITY CONTACTS:

| | |
|-----------------------|---------------------------|
| ALIREN | UNIMARK ENERGY |
| JEFF KLOCKO | 2200 N. UNIVERSITY AVENUE |
| 4201 CORPORATE DRIVE | THESEAN MOHRRE |
| WEST BENTON, IA 50266 | 4940 NE 22ND STREET |
| (515) 830-0445 | DON MONES, IA 50513 |
| | (515) 281-2250 |
| | MEDACON |
| | PAUL MAY |
| | 2205 INDEPENDENT AVE. |
| | DON MONES, IOWA 50513 |
| | (515) 248-1800 |

 **IOWA**
STATE UNIVERSITY
ONE CALL
1-800-292-8989
www.iowaboncall.com
 **811**
Call before you dig

3405 S.E. CROSSROADS DRIVE, SUITE G
GRIMES, IOWA 50111
PHONE: (515) 369-4400 FAX: (515) 369-4410

TECH:

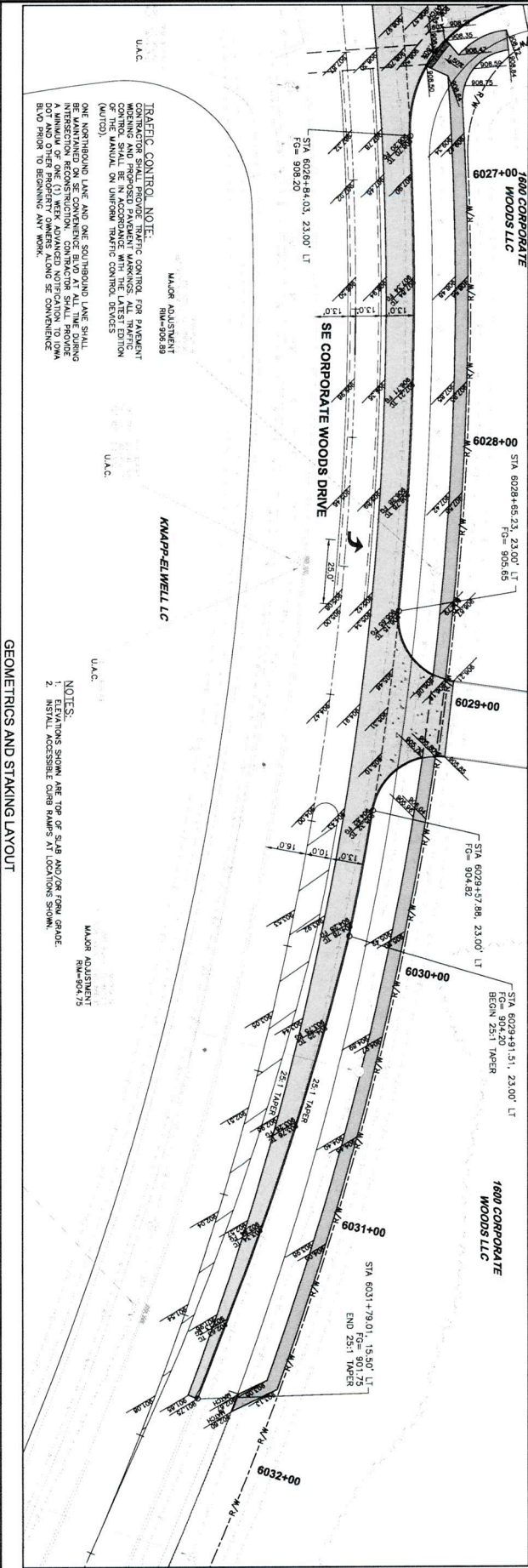
| REVISIONS | DATE |
|------------------------------------|----------|
| FIFTH SUBMITTAL | 12/30/16 |
| FOURTH SUBMITTAL | 12/21/16 |
| THIRD SUBMITTAL | 10/03/16 |
| SECOND SUBMITTAL | 09/19/16 |
| PRELIMINARY PLAN / FIRST SUBMITTAL | 08/25/16 |
| PRELIMINARY PLAN | 08/10/16 |



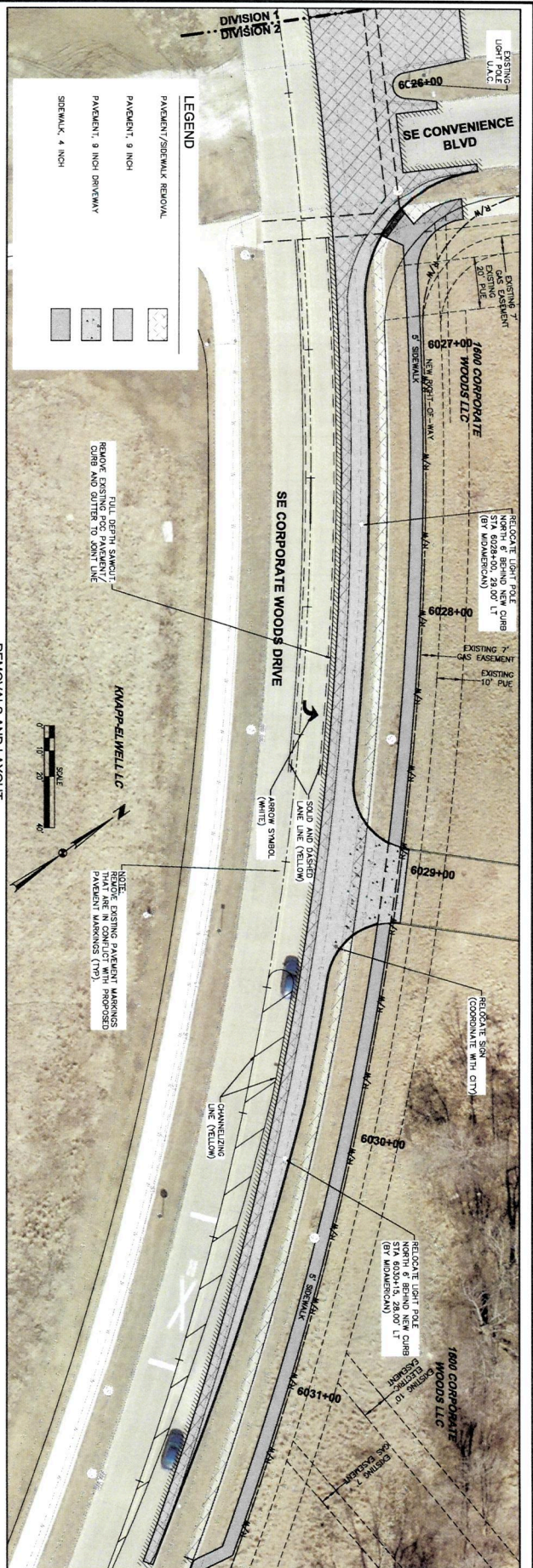
3405 S.E. CROSSROADS DRIVE, SUITE G
GRIMES, IOWA 50111
PHONE: (515) 369-4400 FAX: (515) 369-4410

| | |
|-----------|-------|
| ENGINEER: | TECH: |
|-----------|-------|

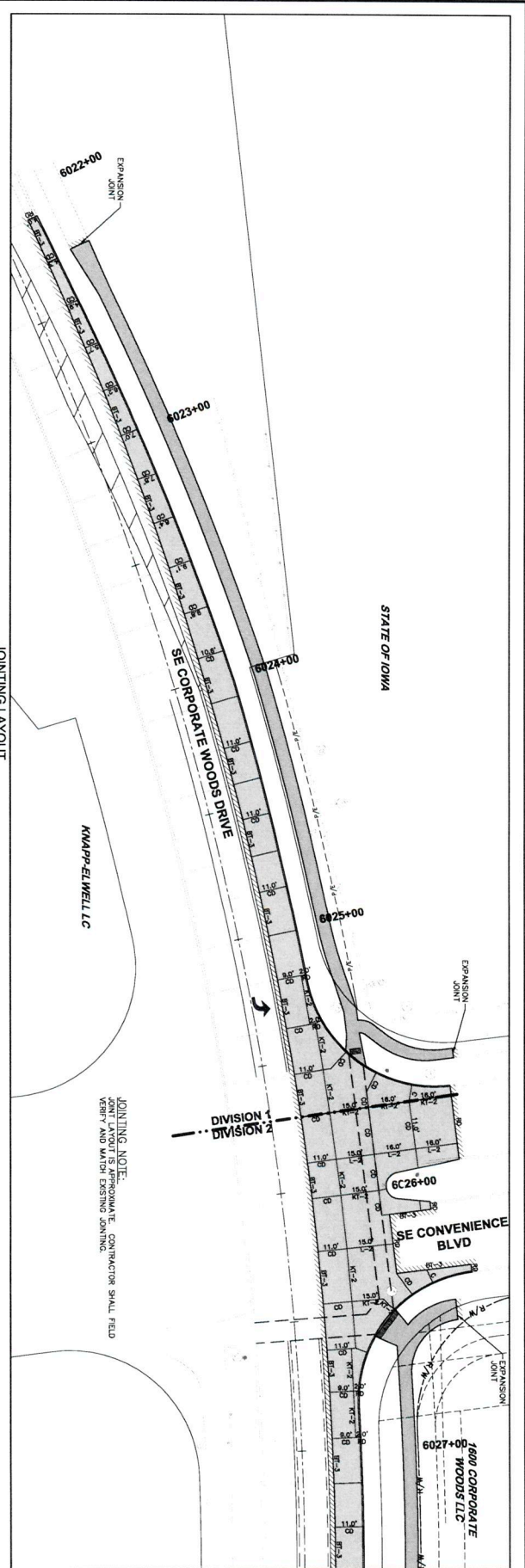
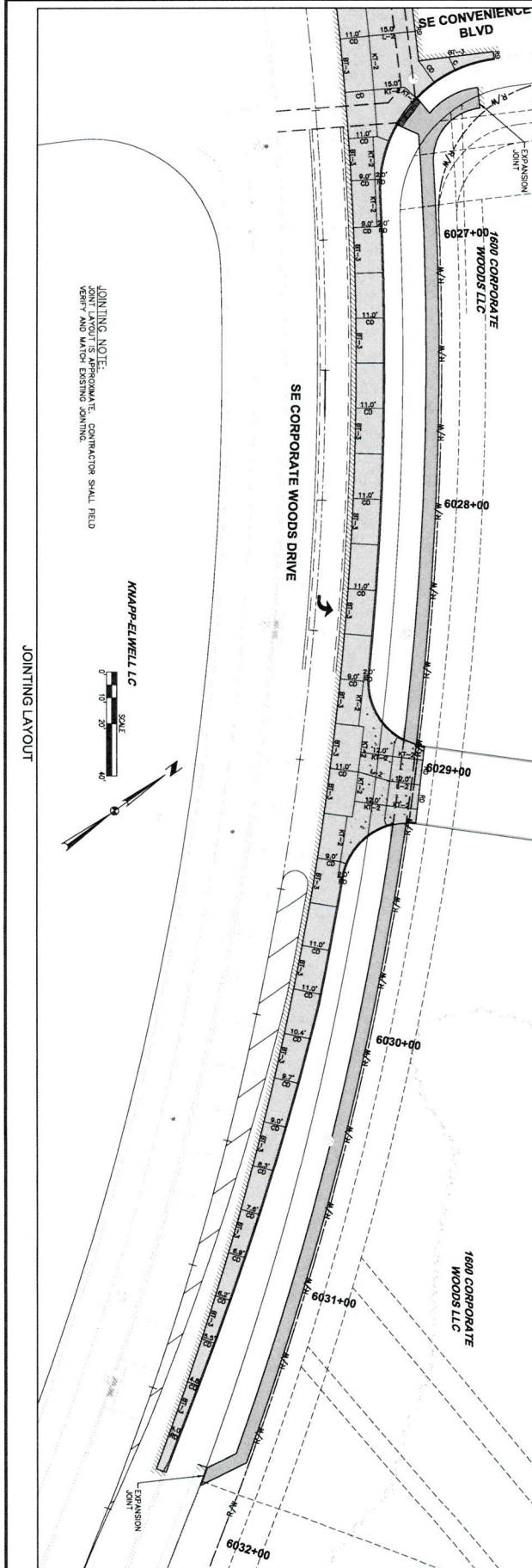
| REVISIONS | DATE |
|------------------------------------|----------|
| FIFTH SUBMITTAL | 12/30/16 |
| FOURTH SUBMITTAL | 12/21/16 |
| THIRD SUBMITTAL | 10/03/16 |
| SECOND SUBMITTAL | 09/19/16 |
| PRELIMINARY PLAN / FIRST SUBMITTAL | 08/25/16 |
| PRELIMINARY PLAN | 08/10/16 |



GEOMETRICS AND STAKING LAYOUT



| REVISIONS | DATE |
|------------------------------------|----------|
| FIFTH SUBMITTAL | 12/20/16 |
| FOURTH SUBMITTAL | 12/21/16 |
| THIRD SUBMITTAL | 10/03/16 |
| SECOND SUBMITTAL | 09/16/16 |
| PRELIMINARY PLAN / FIRST SUBMITTAL | 08/29/16 |
| PRELIMINARY PLAN | 08/10/16 |



| REVISIONS | DATE |
|------------------------------------|----------|
| FIFTH SUBMITTAL | 12/20/16 |
| FOURTH SUBMITTAL | 12/21/16 |
| THIRD SUBMITTAL | 10/03/16 |
| SECOND SUBMITTAL | 09/14/16 |
| PRELIMINARY PLAN / FIRST SUBMITTAL | 08/25/16 |
| PRELIMINARY PLAN | 08/10/16 |