



2 FRONT ELEVATION
SCALE: 1/8" = 1'-0"

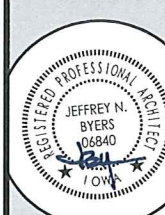


1 BACK ELEVATION
SCALE: 1/8" = 1'-0"



THE
RICHARDSON
DESIGN
PARTNERSHIP,
L.L.C.

510 South 600 East
Salt Lake City, Utah 84102
P: 801.355.6868
F: 801.355.6880

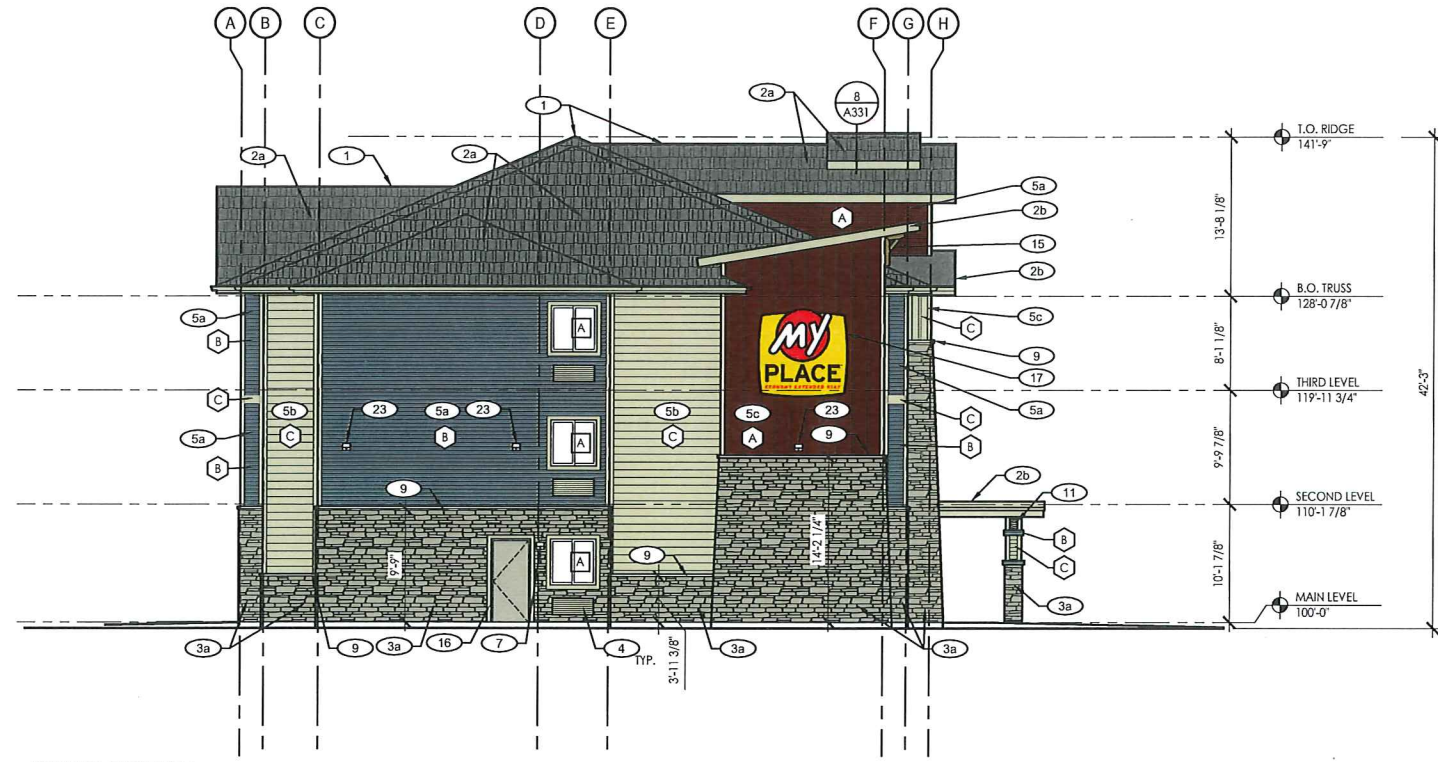


THE GRAPHIC MATERIAL AND DESIGN ON THIS SHEET ARE NOT TO BE REPRODUCED OR USED FOR ANY OTHER PROJECT WITHOUT THE WRITTEN CONSENT OF THE RICHARDSON DESIGN PARTNERSHIP, L.L.C. © 2017

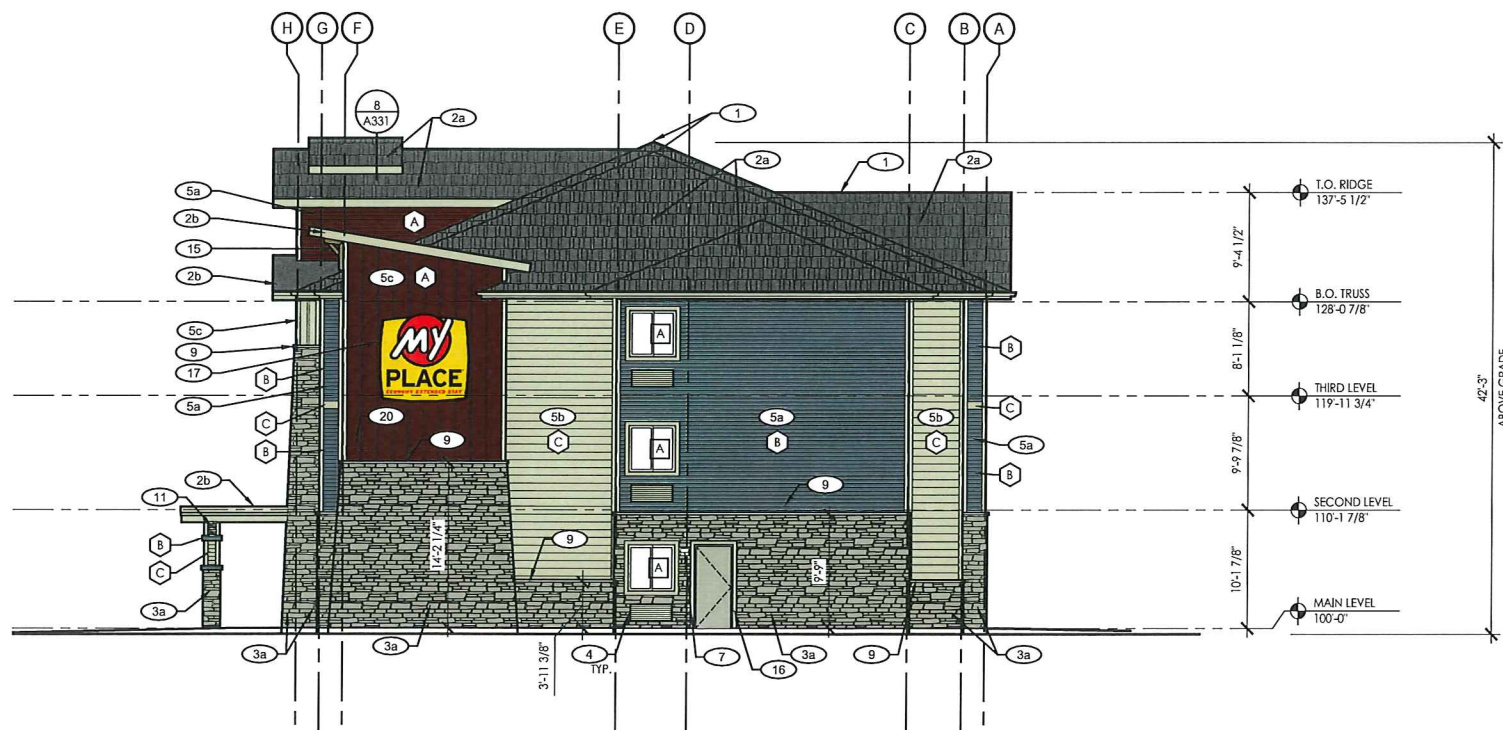
MY PLACE EXTENDED STAY
PROJECT: ANKENY, IOWA

DATE:	DESCRIPTION:
3/9/17	PERMIT SET

EXTERIOR
ELEVATIONS - URBAN
A200
PROJECT #
17-106.01
SHEET #



2 SIDE ELEVATION
SCALE: 1/8" = 1'-0"



1 SIDE ELEVATION
SCALE: 1/8" = 1'-0"

COLOR LEGEND	
A	MANUF: JAMES HARDIE COLOR: COUNTRYLANE RED
B	MANUF: JAMES HARDIE COLOR: BOOTHBAY BLUE
C	MANUF: JAMES HARDIE COLOR: NAVAJO BEIGE

MATERIAL LEGEND	
PROVIDE THE FOLLOWING BASIS OF DESIGN FINISHES OR APPROVED EQUAL PRODUCTS	
	ASPHALT SHINGLES COLOR: MATCH OWEN'S CORNING ESTATE GRAY
	SINGLE-PLY MEMBRANE ROOF COLOR: OWNER TO SELECT
	ADHERED STONE VENEER "A" MANUF: HARRISTONE STYLE & COLOR: OWNER TO SELECT
	ADHERED STONE VENEER "B" MANUF: HARRISTONE STYLE & COLOR: OWNER TO SELECT
	CEMENT BOARD SIDING "A" - LAP SIDING EXPOSURE: 4" COLOR: SEE ELEVATION
	CEMENT BOARD SIDING "B" - LAP SIDING EXPOSURE: 8" COLOR: SEE ELEVATION
	CEMENT BOARD SIDING "C" - BOARD AND BATTEN EXPOSURE: 14" VERTICAL (16" PANEL WIDTH) COLOR: SEE ELEVATION
	DECORATIVE STONE LINTEL MANUF: HARRISTONE COLOR: OWNER TO SELECT
	SOFFIT PANEL EXPOSURE: 16" COLOR: COLOR TO MATCH "NAVAJO BEIGE"
COLOR OF ALL FASCIA, TRIM & GUTTERS TO MATCH SOFFIT PANEL	

KEYNOTES	
1	RIDGE VENT.
2a	ASPHALT SHINGLES. SEE MATERIAL LEGEND.
2b	SINGLE-PLY ROOF MEMBRANE. SEE MATERIAL LEGEND.
3a	ADHERED STONE VENEER "A". SEE MATERIAL LEGEND.
3b	ADHERED STONE VENEER "B". SEE MATERIAL LEGEND.
4	HEATING/COOLING UNIT. VERIFY ROUGH OPENING W/ MANUFACTURER.
5a	CEMENT BOARD SIDING W/ 4" EXPOSURE. SEE MATERIAL LEGEND.
5b	CEMENT BOARD SIDING W/ 8" EXPOSURE. SEE MATERIAL LEGEND.
5c	CEMENT BOARD SIDING W/ 14" EXPOSURE. SEE MATERIAL LEGEND.
6	GUTTER AND DOWNSPOUTS. SIZE, AND LOCATION TO BE DETERMINED BY RUN-OFF CALCULATIONS AND SHOP DRAWINGS. VERIFY DOWNSPOUT DISCHARGE W/ G.C. TO PREVENT WATER FLOWING ACROSS LANDSCAPING OR OVER SIDEWALKS. WHEN REQUIRED, ROUTE DOWNSPOUTS TO STORM SEWER. SEE CIVIL DRAWINGS.
7	EXTERIOR LIGHTING. SEE DETAIL 10/A331.
8	SIDING BAND AT MATERIAL CHANGE AND WINDOW TRIM. COLOR TO MATCH "NAVAJO BEIGE".
9	STONE CAP. COLOR TO MATCH STONE LINTEL. PROVIDE METAL FLASHING. PAINT TO MATCH STONE LINTEL TO RUN BEHIND SIDING AND OVER STONE CAP.
10	STONE DECORATIVE LINTEL (10"x72").
11	ROUGH-SAWN TIMBER BEAMS. CLEAR COAT FINISH.
12	8'-0" MY PLACE BUILDING SIGN. FURNISHED BY OTHERS UNDER SEPARATE PERMIT.
13	SOFFIT PANEL. INSTALL VENT PANELS AS INDICATED ON ROOF PLAN. SEE MATERIAL LEGEND.
14	3'-0" MY PLACE BUILDING SIGN. FURNISHED BY OTHERS UNDER SEPARATE PERMIT.
15	WOOD DECORATIVE BRACKET. SEE DETAIL 1/A331. FINISH TO MATCH TIMBER BEAMS.
16	DOOR, AS SCHEDULED.
17	6'-0" MY PLACE BUILDING SIGN. FURNISHED BY OTHERS UNDER SEPARATE PERMIT.
18	ROOF PARAPET SCUPPER DRAIN.
19	BUILDING MOUNTED FLOOD LIGHTING. MOUNT AT 32'-0" AFF. SEE DETAIL 11/A331.
20	BUILDING ADDRESS. INSTALL PER LOCAL REGULATIONS.
21	BUILDING MOUNTED FLOOD LIGHTING. MOUNT AT 27'-0" AFF. SEE DETAIL 11/A331.
22	BUILDING MOUNTED FLOOD LIGHTING. MOUNT AT 29'-0" AFF. SEE DETAIL 11/A331.
23	BUILDING MOUNTED FLOOD LIGHTING. MOUNT AT 15'-0" AFF. SEE DETAIL 11/A331.



THE
RICHARDSON
DESIGN
PARTNERSHIP,
L.L.C.
510 South 600 East
Salt Lake City, Utah 84102
P: 801.355.6868
F: 801.355.6880



THE RICHARDSON DESIGN PARTNERSHIP, L.L.C. IS THE DESIGNER OF RECORD FOR THE PROJECT. THE RICHARDSON DESIGN PARTNERSHIP, L.L.C. IS NOT RESPONSIBLE FOR THE ACCURACY OF THE INFORMATION PROVIDED IN THIS DOCUMENT. THE RICHARDSON DESIGN PARTNERSHIP, L.L.C. IS NOT RESPONSIBLE FOR THE ACCURACY OF THE INFORMATION PROVIDED IN THIS DOCUMENT.

MY PLACE EXTENDED STAY
2306 SE OWENS DR.
ANNETT, IOWA
PROJECT:

DATE:	DESCRIPTION
3/9/17	PERMIT SET

EXTERIOR
ELEVATIONS-URBAN
PROJECT #
17-106.01
SHEET #
A201