

**SVPA**  
Architects, Inc.

1466 28th Street, Suite 200  
West Des Moines, Iowa 50266  
515.327.5990 Fax: 515.327.5991

**CIVIL ENGINEER**  
SNYDER & ASSOCIATES  
2727 SW SNYDER BLVD.  
ANKENY, IA 50023  
TEL: 515.964.2020 FAX: 515.964.7938

**LANDSCAPE ARCHITECT**  
SNYDER & ASSOCIATES  
2727 SW SNYDER BLVD.  
ANKENY, IA 50023  
TEL: 515.964.2020 FAX: 515.964.7938

**STRUCTURAL ENGINEER**  
TOMETTCH ENGINEERING, INC.  
10501 BUENA VISTA COURT  
URBANDALE, IA 50222  
TEL: 515.280.8020 FAX: 515.727.9124

**MECHANICAL ENGINEER**  
KCL ENGINEERING  
218 12 8TH STREET  
WEST DES MOINES, IA 50265  
TEL: 515.724.7938 FAX: 515.724.7938

**ELECTRICAL ENGINEER**  
KCL ENGINEERING  
218 12 8TH STREET  
WEST DES MOINES, IA 50265  
TEL: 515.724.7938 FAX: 515.724.7938

CLIENT LOGO



**GENERAL NOTE:**  
UNDERGROUND FACILITIES, STRUCTURES, AND UTILITIES HAVE BEEN SHOWN BASED UPON INFORMATION OBTAINED FROM FIELD LOCATIONS BY UTILITY COMPANIES. AVAILABLE SURVEYS AND RECORDS. THEIR LOCATIONS MUST BE CONSIDERED APPROXIMATE ONLY. IT IS ALSO POSSIBLE THAT THERE MAY BE OTHER UNDERGROUND FACILITIES, STRUCTURES, AND UTILITIES IN EXISTENCE THAT ARE NOT SHOWN. IT IS THE RESPONSIBILITY OF EACH INDIVIDUAL PARTY REFERENCING THIS PLAN TO DETERMINE THE EXACT LOCATION AND TYPE OF UNDERGROUND FACILITIES ON THE SITE. HAND EXCAVATE AT CRITICAL POINTS AS NECESSARY TO VERIFY LOCATIONS, SIZES, ELEVATIONS, FLOW LINES, ETC. IF A PROBLEM OR INTERFERENCE EXISTS, NOTIFY ARCHITECT/ENGINEER BEFORE PROCEEDING.

**KEYED NOTES:**  
① REFER TO DRAWINGS E200 AND E400 FOR ADDITIONAL INFORMATION.

RECEIVED  
MAY 30 2017

PROJECT INFORMATION CITY OF ANKENY

**ANKENY FIRE STATION #3**  
12345 STREET ST.  
ANKENY, IA 50023

**CITY OF ANKENY**  
410 WEST FIRST STREET  
ANKENY, IA 50023

DRAWING ISSUE INFORMATION

ISSUE FOR: 95% OWNER REVIEW  
NOT FOR CONSTRUCTION  
ISSUE DATE: 05/26/2017

MANAGEMENT INFORMATION

PROJECT NO: 16022

PRINCIPAL IN CHARGE: PIC PROJECT ARCHITECT: PA

© 2017 SVPA ARCHITECTS INC.  
THESE DOCUMENTS HAVE BEEN PREPARED SPECIFICALLY FOR THE ABOVE REFERENCED PROJECT. THEY ARE NOT SUITABLE FOR USE ON OTHER PROJECTS OR IN OTHER LOCATIONS WITHOUT THE EXPRESS WRITTEN APPROVAL AND PARTICIPATION OF SVPA ARCHITECTS INC. REPRODUCTION IS PROHIBITED.

SHEET TITLE

SITE PLAN - ELECTRICAL

SHEET NUMBER

**E001**



S V P A

Architects, Inc.

1466 28th Street, Suite 200  
West Des Moines, Iowa 50266  
515.327.5990 Fax: 515.327.5991

CIVIL ENGINEER  
SNYDER & ASSOCIATES  
2727 SW SNYDER BLVD.  
ANKENY, IA 50022  
TEL: 515.964.2020 FAX: 515.964.7638

LANDSCAPE ARCHITECT  
SNYDER & ASSOCIATES  
2727 SW SNYDER BLVD.  
ANKENY, IA 50022  
TEL: 515.964.2020 FAX: 515.964.7638

STRUCTURAL ENGINEER  
TOMETECH ENGINEERING, INC.  
10501 BUENA VISTA COURT  
URBANDALE, IA 50322  
TEL: 515.280.8022 FAX: 515.727.9124

MECHANICAL ENGINEER  
KCL ENGINEERING  
218 12 9th STREET  
WEST DES MOINES, IA 50265  
TEL: 515.724.7938 FAX: 515.724.7934

ELECTRICAL ENGINEER  
KCL ENGINEERING  
218 12 9th STREET  
WEST DES MOINES, IA 50265  
TEL: 515.724.7938 FAX: 515.724.7934

CLIENT LOGO

PROJECT INFORMATION

**ANKENY FIRE STATION #3**  
12345 STREET ST.  
ANKENY, IA 50023

**CITY OF ANKENY**  
410 WEST FIRST STREET  
ANKENY, IA 50023

DRAWING ISSUE INFORMATION

ISSUE FOR: 95% OWNER REVIEW  
NOT FOR CONSTRUCTION  
ISSUE DATE: 05/26/2017

REV DATE	REV

MANAGEMENT INFORMATION

PROJECT NO: 16022

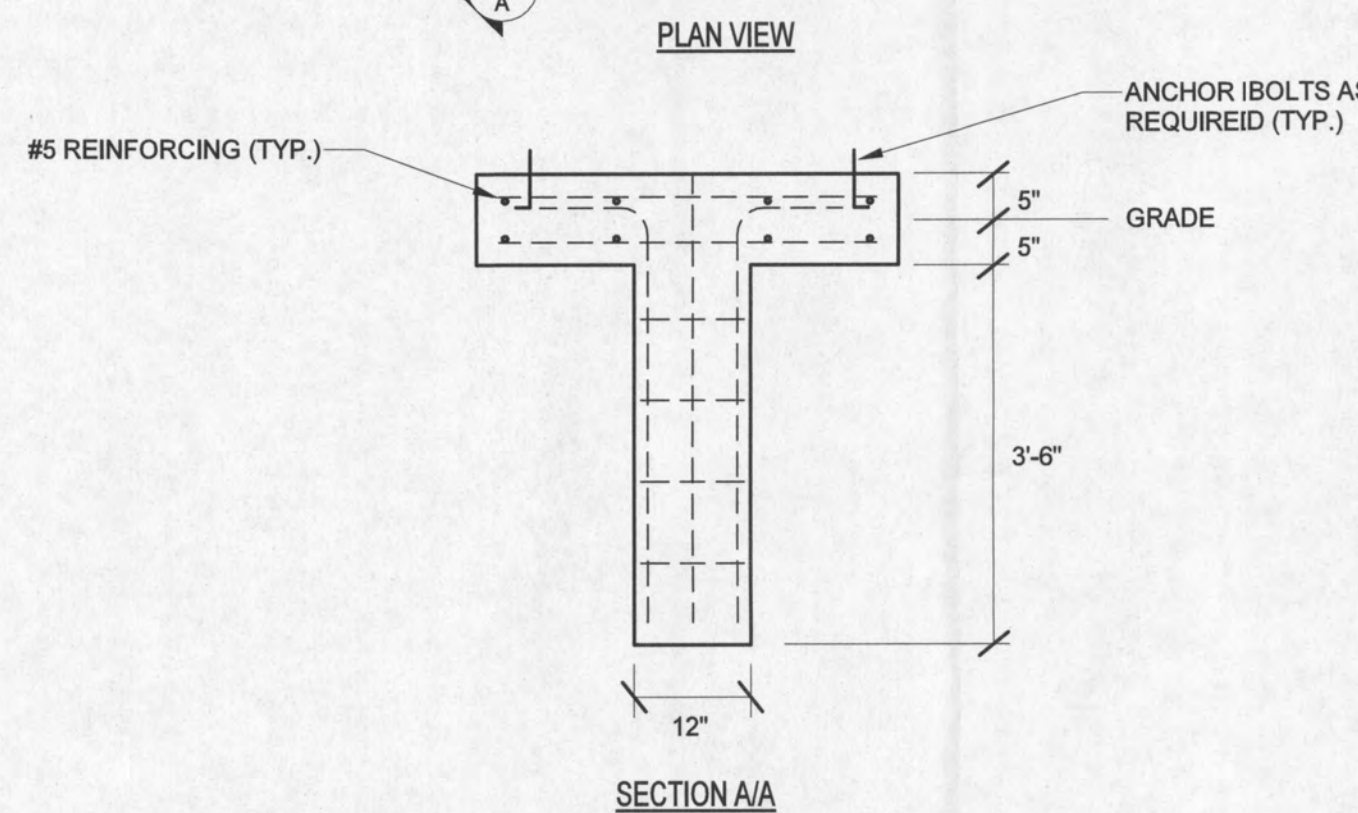
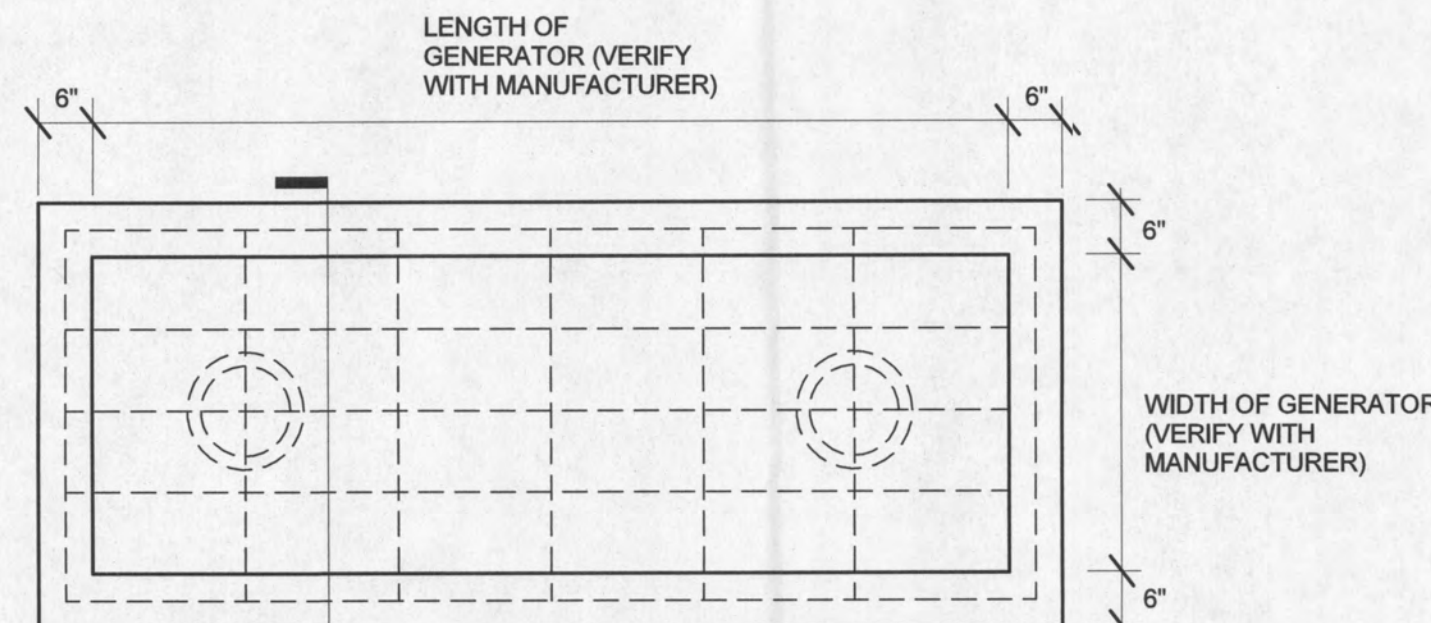
PRINCIPAL IN CHARGE: RO PROJECT ARCHITECT: RO

© 2017 SVPA ARCHITECTS INC.  
THESE DOCUMENTS HAVE BEEN PREPARED SPECIFICALLY FOR THE ABOVE REFERENCED PROJECT. THEY ARE NOT SUITABLE FOR USE ON OTHER PROJECTS OR IN OTHER LOCATIONS WITHOUT THE EXPRESS WRITTEN APPROVAL AND PARTICIPATION OF SVPA ARCHITECTS INC. REPRODUCTION IS PROHIBITED.

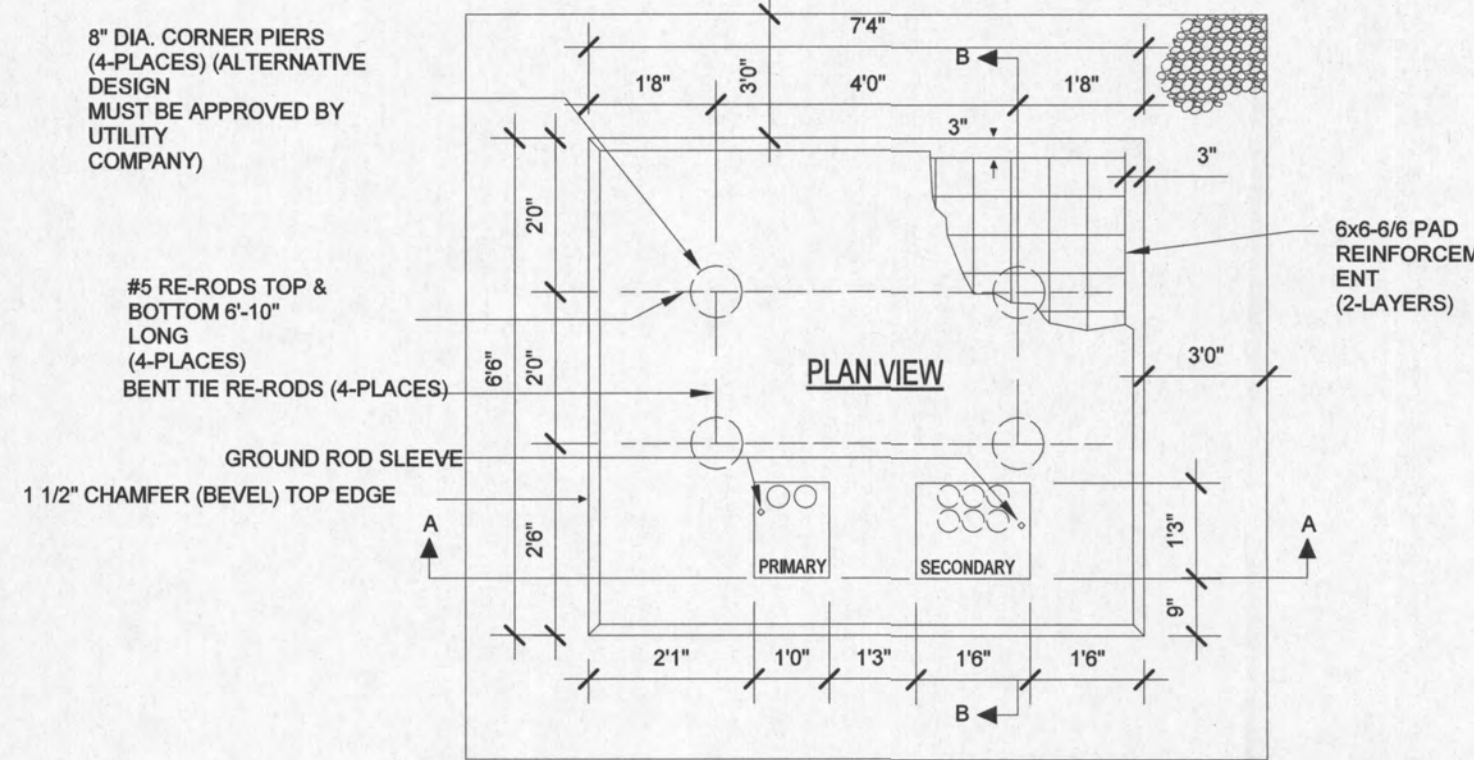
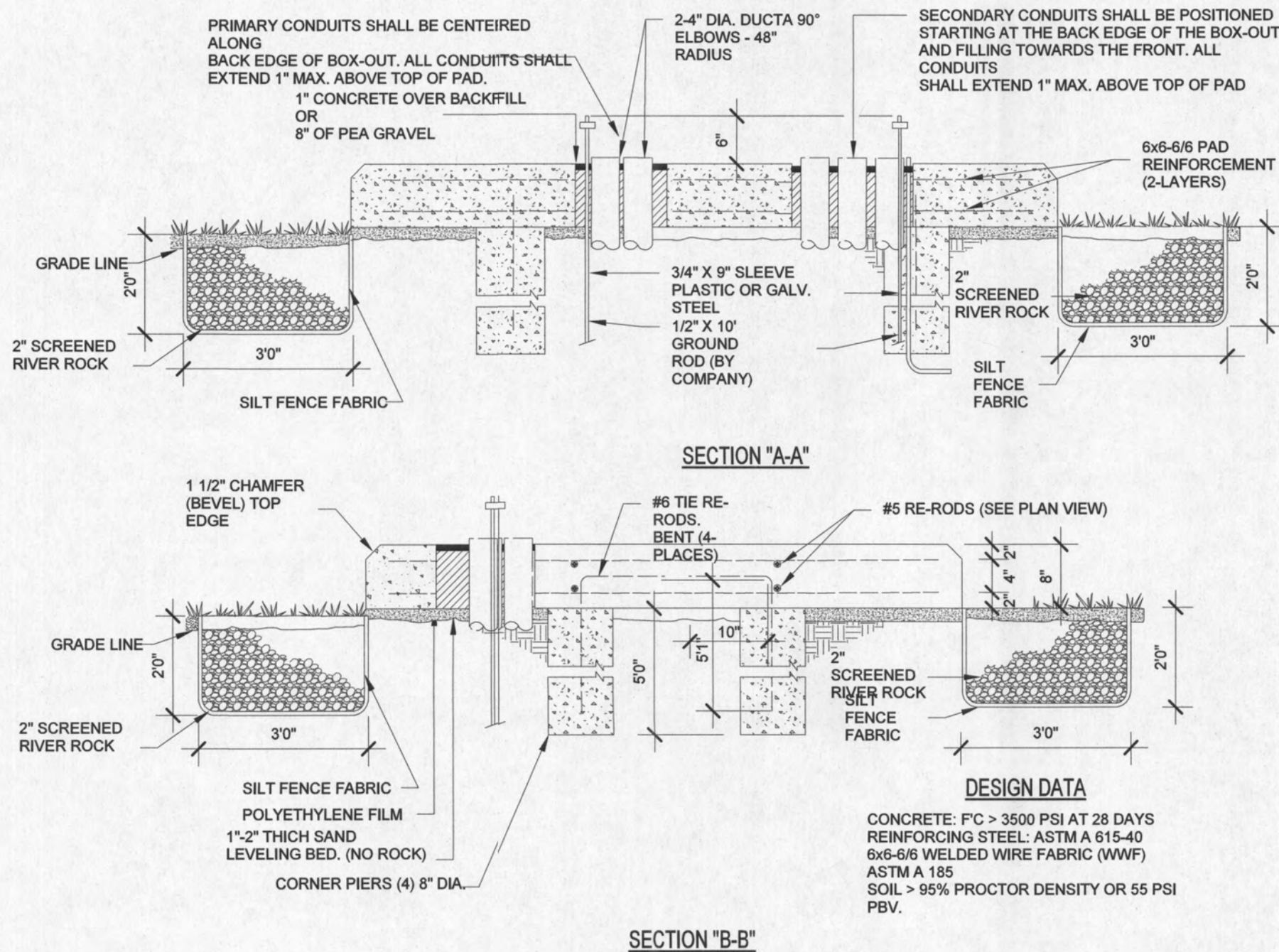
SHEET TITLE  
**ELECTRICAL - DETAILS**

SHEET NUMBER

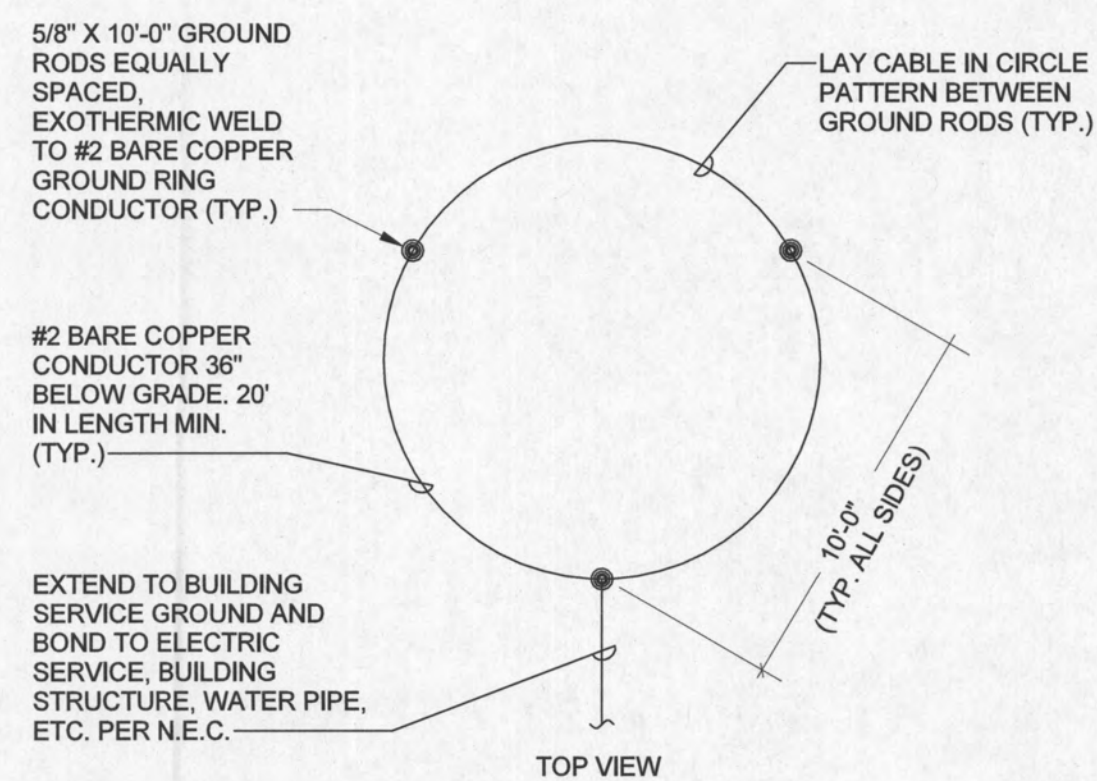
**E402**



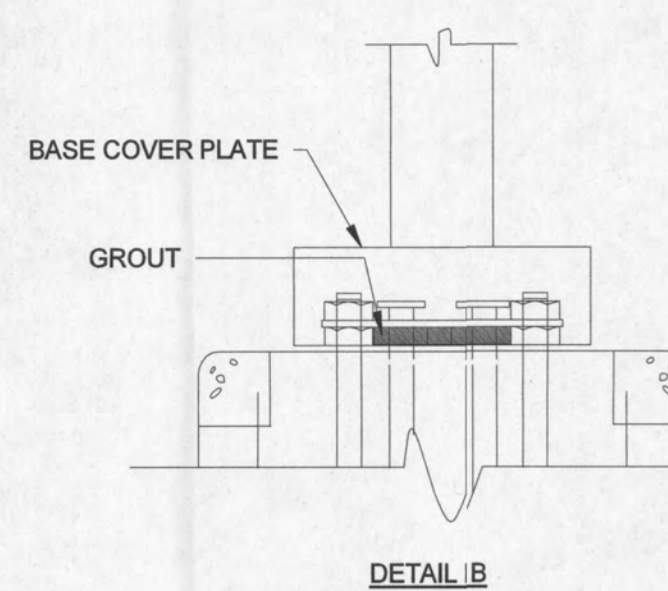
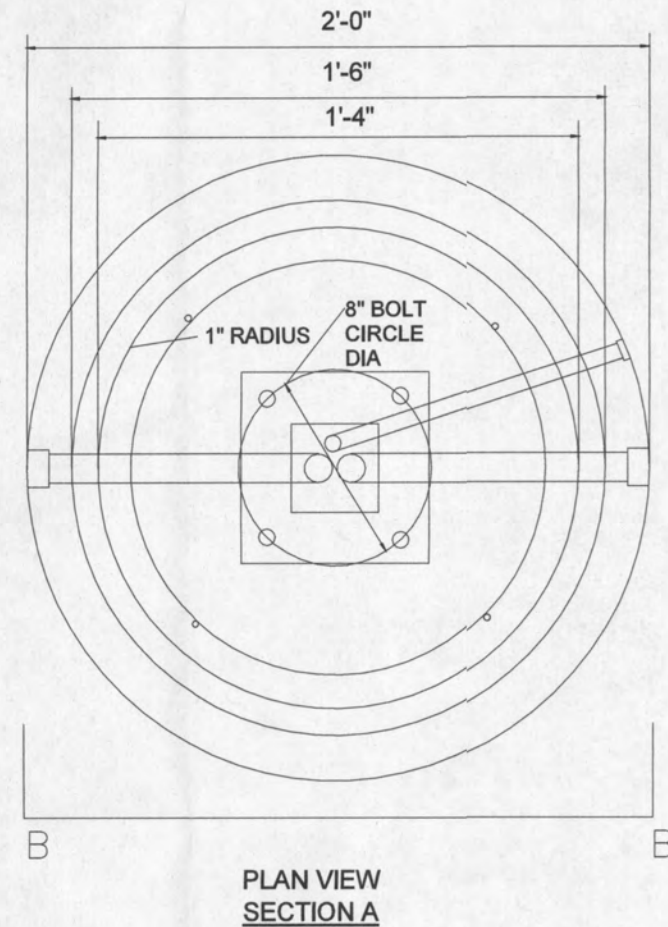
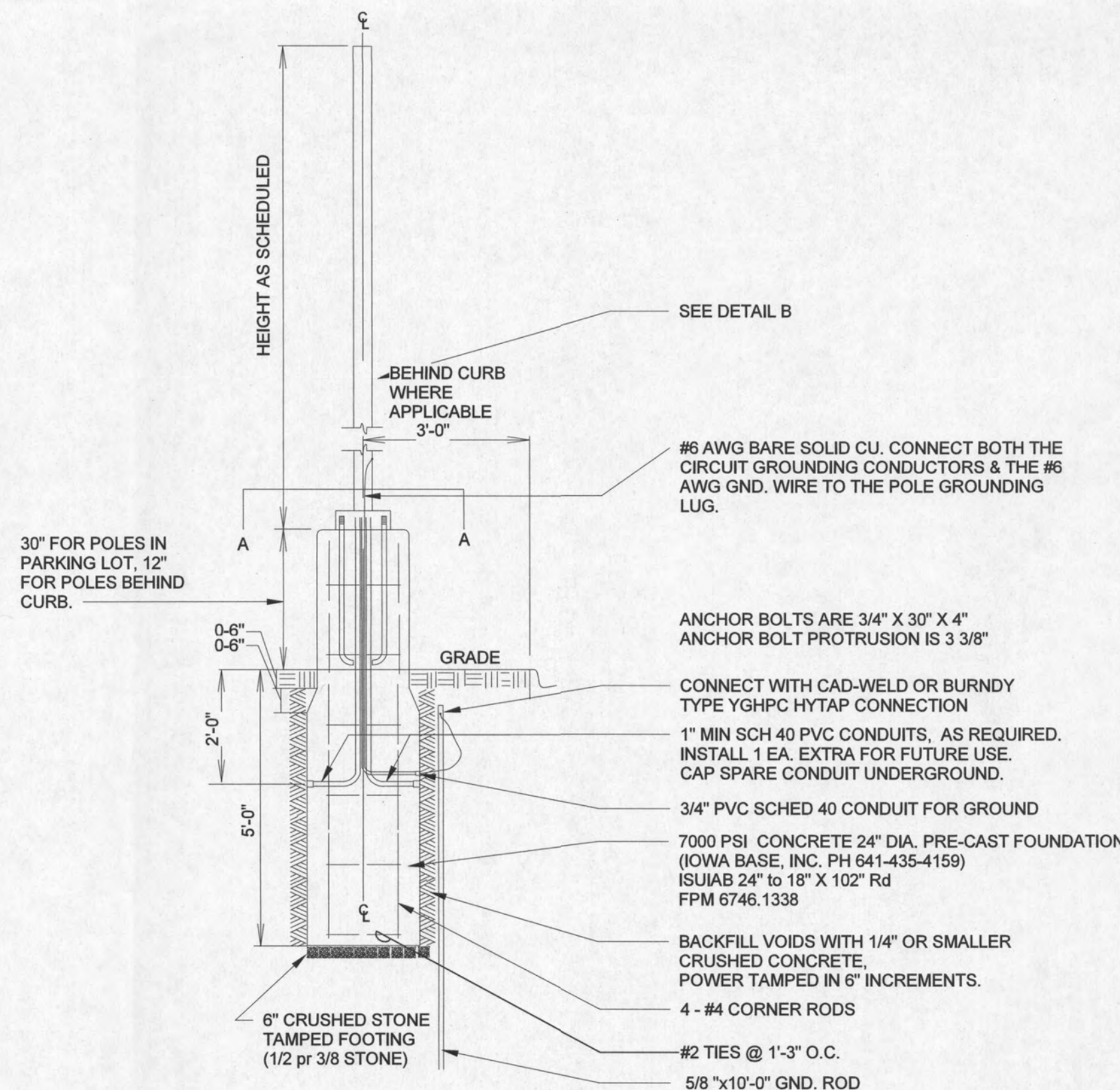
2 GENERATOR PAD



1 500KVA TRANSFORMER PAD



3 GROUND RING



4 LIGHTING POLE MOUNTING BASE