

PLANT LIST

Key	Botanical name	Common Name	Size	Root	Spacing	Quantity
DECIDUOUS TREES						
AC RU	Acer rubrum 'Autumn Flame'	Autumn Flame Maple	2" cal.	Cont. or B&B	See Plan	4
GL TR	Gleditsia tricanthos inermis 'Shademaster'	Shademaster Honeylocust	2" cal.	Cont. or B&B	See Plan	6
QU RO	Quercus robur 'Fastigiata'	Upright English Oak	2" cal.	Cont. or B&B	See Plan	9
UL AC	Ulmus Accolade	Accolade Elm	2" cal.	Cont. or B&B	See Plan	5
ORNAMENTAL TREES						
MA RA	Malus Radiant	Radiant Crabapple	1.5" cal.	Cont. or B&B	See Plan	13
MA SS	Malus Spring Snow	Spring Snow Crabapple	1.5" cal.	Cont. or B&B	See Plan	6
PY CA	Pyrus calleryana	Autumn Blaze Pear	1.5" cal.	Cont. or B&B	See Plan	5
EVERGREEN TREES						
PI PU	Picea pungens 'Densata'	Black Hills Spruce	6'	Cont. or B&B	See Plan	7
PI FL	Pinus flexilis 'Vanderwolf'	Vanderwolf Pine	6'	Cont. or B&B	See Plan	5
PI ST	Pinus strobus	Eastern White Pine	6'	Cont. or B&B	See Plan	6
DECIDUOUS SHRUBS						
AM CA	Amelanchier canadensis	Autumn Brilliance Serviceberry	10 Gal.	Cont. or B&B	See Plan	9
BE TH	Berberis thunbergii 'Carousel'	Carousel Barberry	5 Gal.	Container	See Plan	19
EU AL	Eunonymus alatus 'Compactus'	Dwarf Burning Bush	5 Gal.	Container	See Plan	69
HY AR	Hydrangea arborescens 'Annabelle'	Annabelle Hydrangea	5 Gal.	Container	See Plan	11
RO AD	Rosa 'Adelaide Hoodless'	Adelaide Hoodless Rose	5 Gal.	Container	See Plan	30
SY MC	Syringa 'Miss Canada'	Miss Canada Lilac	5 Gal.	Container	See Plan	20
SY DK	Syringa meyeri 'Palibin'	Dwarf Korean Lilac	5 Gal.	Container	See Plan	19
ORNAMENTAL GRASS AND PERENNIALS						
CA AC	Calamagrostis acutiflora	Karl Foerster Feather Reed Grass	1 Gal.	Container	See Plan	69
SC HE	Sporobolus heterolepis 'Tara'	Tara Prairie Dropseed	1 Gal.	Container	See Plan	56

NOTES

1. ALL PLANT MATERIAL SHALL CONFORM TO THE "AMERICAN STANDARD FOR NURSERY STOCK" (ANSI Z60.1 - 1986).
2. SOD OR SEED SHALL BE THREE IMPROVED VARIETIES OF KENTUCKY BLUE GRASS WITH AT LEAST ONE VARIETY BEING SHADE TOLERANT. ALL SODDING & LANDSCAPE PLANTINGS SHALL BE INSTALLED IN ACCORDANCE WITH THE URBAN STANDARD SPECIFICATIONS, UNLESS SPECIFIED OTHERWISE.
3. WEED BARRIER SHALL BE PLACED IN ALL SHRUB BEDS. WEED BARRIER SHALL BE A NON-WOVEN POLYPROPYLENE WEED BARRIER SUCH AS TYPAR, MIRAFI OR DEWITT PRO.
4. QUANTITIES PROVIDED IN PLANT SCHEDULE ARE FOR INFORMATION ONLY. LANDSCAPE CONTRACTOR SHALL BE RESPONSIBLE FOR PROVIDING QUANTITIES SHOWN ON PLAN.
5. THE LANDSCAPING CONTRACTOR SHALL HAVE ALL UTILITIES LOCATED BEFORE STARTING ANY SITE WORK OR PLANTING.
6. AMEND PLANTING BEDS AND SOD AREAS WITH 3 CY/1,000 SF OF ORGANIC COMPOST. AMENDMENTS SHALL BE THOROUGHLY INCORPORATED INTO EXISTING SOIL.
7. SOD ALL DISTURBED AREAS. IN ADDITION, EXISTING TURF AREAS DISTURBED BY CONSTRUCTION SHALL BE REPLACED WITH BLUEGRASS SOD.
8. PROVIDE ONE YEAR WARRANTY ON ALL MATERIALS FROM THE DATE OF FINAL ACCEPTANCE.
9. OWNERS REPRESENTATIVE SHALL APPROVE PLANT LOCATIONS PRIOR TO FINAL INSTALLATION.
10. STAKE SOD ON ALL SLOPES 3 : 1 OR GREATER.
11. IT IS THE CONTRACTORS RESPONSIBILITY TO REMOVE IDENTIFICATION TAGS AND CORDS ON ALL PLANT MATERIAL PRIOR TO THE COMPLETION OF THE CONTRACT.
12. STAKE AND WRAP ALL DECIDUOUS TREES IMMEDIATELY AFTER PLANTING. STAKE ALL TREES ACCORDING TO THE STAKING DETAILS. CONTRACTOR SHALL ADJUST AND MAINTAIN GUYING TENSION THROUGHOUT THE PLANT ESTABLISHMENT PERIOD.
- SHALL BE RESPONSIBLE FOR THE PROTECTION OF ALL EXISTING ALL EXISTING UTILITIES.
13. NO LANDSCAPE MATERIAL SHALL BE SUBSTITUTED WITHOUT THE AUTHORIZATION OF THE OWNER OR LANDSCAPE ARCHITECT.
14. EDGING SHALL BE 1/8" X 4" ROLLED STEEL EDGING. EDGING SHALL BE PINNED AT 10' INTERVALS AT A MINIMUM, AND A 1" OPENING SHALL BE PROVIDED AT LOW POINTS AND 30' INTERVALS TO ALLOW FOR DRAINAGE. ALL EDGING ABUTTING SOD OR GRASS SHALL BE SET FLUSH WITH THE FINISHED SURFACE.
15. THE LANDSCAPE CONTRACTOR SHALL DESIGN AND INSTALL AN IRRIGATION SYSTEM. ALL TURF AREAS TO BE IRRIGATED WITH A POP-UP SPRAY/ ROTOR IRRIGATION SYSTEM. ALL PLANTING BEDS SHALL BE IRRIGATED WITH A DRIP IRRIGATION SYSTEM.
16. IT IS RECOMMENDED THAT THE LANDSCAPE CONTRACTOR VISIT THE SITE PRIOR TO BIDDING TO UNDERSTAND THE LIMIT OF LANDSCAPE/ DISTURBED AREA TO BE PLANTED AND SODDED.
17. TOPSOIL: IN ORDER TO PROVIDE AN ADEQUATE GROWING MEDIUM. A MINIMUM OF 6 INCHES OF TOPSOIL SHOULD BE PLACED OVER THE DISTURBED AREA PRIOR TO SEEDING. DEEPER TOPSOIL DEPTHS (8-12 INCHES OR GREATER) ARE DESIRABLE AS THEY INCREASE THE ORGANIC MATTER AVAILABLE FOR USE BY THE PLANTS. ALLOW FOR DEEPER ROOT PENETRATION AND INCREASE THE MOISTURE HOLDING ABILITY OF THE SOIL. THESE BENEFITS WILL INCREASE THE DROUGHT TOLERANCE AND LONG TERM HEALTH OF THE VEGETATION. WHERE SUFFICIENT TOP SOIL IS NOT AVAILABLE, COMPOSTED MATERIALS MAY BE INCORPORATED AT THE RATE OF 1 INCH OF COMPOST FOR EVERY 3 INCHES OF DEFICIENT TOPSOIL. THIS WILL INCREASE ORGANIC MATTER CONTENT OF THE SOIL, AND PROVIDE ADEQUATE GROWING MEDIUM FOR VEGETATION.

PLANTING DETAILS:

- PLANT SO THAT TOP OF ROOT BALL IS 2"-4" ABOVE THE FINISHED GRADE
- 2 STRAND TRISTED 12 GAUGE GAL. WIRE WITH FABRIC TIES
- STAKE (3) DIRECTIONS

METAL POSTS
DRIVEN (MIN. 18") FIRMLY INTO SUBGRADE PRIOR TO BACKFILLING

STAKE ABOVE FIRST BRANCHES OR AS NECESSARY FOR FIRM SUPPORT

6"-8" CONTINUOUS BERM (OMIT FOR CONIFERS AND IN LAWN AREAS)

SCARIFY SIDES AND BOTTOM OF PLANTING HOLE

BACKFILL WITH BLEND OF EXISTING SOIL AND A MAX. 20% (BY VOL.) ORGANIC MATERIAL. WATER THOROUGHLY TO SETTLE AND REMOVE AIR POCKETS.

PLACEMENT NOTES:
SET SHRUB PLUMB. SPACE PLANTS, AND PLACE FOR BEST EFFECT.

PRUNING NOTES:
DO NOT HEAVILY PRUNE SHRUB AT PLANTING. PRUNE ONLY DEAD OR BROKEN BRANCHES. IF FORM IS COMPROMISED BY PRUNING, REPLACE SHRUB.

CUT BURLAP AND ROLL AWAY FROM ROOTBALL

SET TOP OF ROOTBALL 1-2" HIGHER THAN ADJACENT GRADE.

4" HIGH WATER SAUCER.

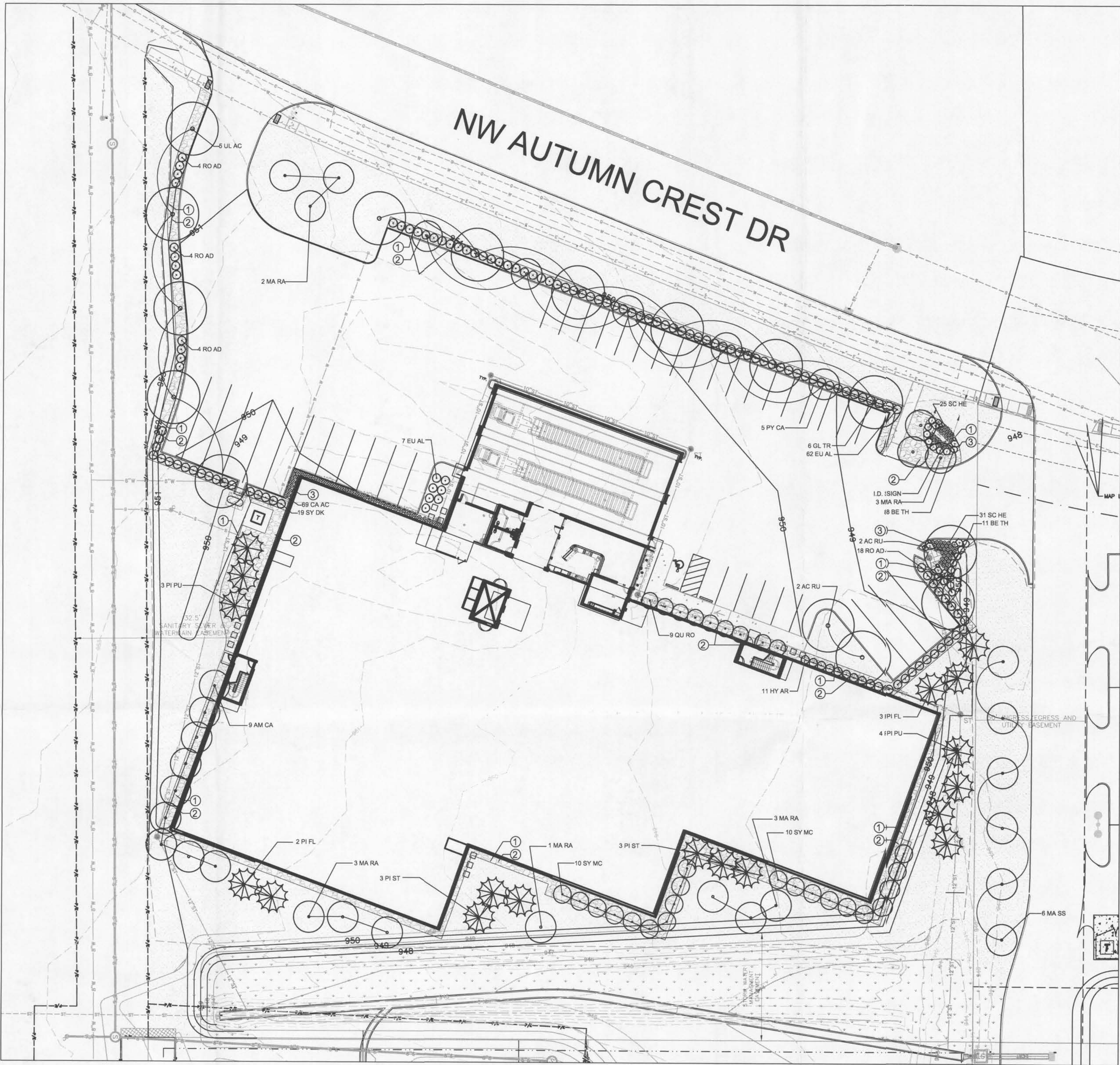
BACKFILL WITH BLEND OF EXISTING SOIL AND A MAX. 20% (BY VOL.) ORGANIC MATERIAL. WATER THOROUGHLY TO SETTLE AND REMOVE AIR POCKETS.

SCARIFY SIDES AND USE 1:1 SLOPE.

REMOVE CONTAINER (INCLUDING FIBER CONTAINERS), BASKETS, WIRE, ETC. FROM THE ROOTBALL. BREAK UP ENCIRCLING ROOTS WITH SHARP KNIFE OR SPADE. SPLIT BOTTOM OF ROOT BALL. PLACE ON UNDISTURBED SOIL TO PREVENT SETTLEMENT.

1 TREE PLANTING – VERTICAL STAKES
NOT TO SCALE

2 SHRUB AND ORNAMENTAL GRASS PLANTING
NOT TO SCALE



PLANTING PLAN

LEGEND

- 1 – STEEL EDGING
- 2 – 70%-(1"-1.5") RIVER ROCK MULCH / 30% (4"-6") COBBLE (3"-4" DEPTH)
- 3 – SHREDDED CEDAR MULCH (3" DEPTH)
- A – 3/4 TON ROUNDED GRANITE BOULDER
- B – 1/2 TON ROUNDED GRANITE BOULDER
- C – 1/4 TON ROUNDED GRANITE BOULDER
- TURF: turf shall be 3 improved varieties of blue grass. one shall be shade tolerant.
- DETENTION SEED MIX- Wet Mesic Mix-Native Seed Mix- Apply at 40lb/acre. Contact Ion Exchange, Inc. (800)291-2143

LANDSCAPE CALCULATIONS

OPEN SPACE LANDSCAPE REQUIREMENTS
OPEN SPACE REQUIRED 20% = 27,289 S.F.
OPEN SPACE PROVIDED = 51,999 S.F. (37.5%)

LANDSCAPE REQUIREMENTS= 2 TREES & 6 SHRUBS PER 3,000 S.F. OF OPEN SPACE
REQUIRED TREES= 18 SHRUBS= 55
PROVIDED TREES= 66 SHRUBS= 177

SCREENING REQUIREMENTS
AUTUMN CREST DRIVE (TYPE 'B' AND PARKING) TREES 19 SHRUBS 130 PROVIDED

PAVEMENT SHADING REQUIREMENTS
20% OF ALL PAVEMENT NEEDS TO BE SHADED
PARKING/ DRIVES = 3,600 S.F. 20% = 7,200 S.F.
7,200 S.F. / 706 (30" DIA. TREE) = 10 TREES
TREES PROVIDED = 10 TREES



Project: Ankeny Green Acres Storage

Ankeny, Iowa

Client: Green Acres Storage

Revisions	1	2	3	4	5
-----------	---	---	---	---	---



0 10' 15' 30'
SCALE 1"= 30'

Designed by: RL
Drawn by: RL
Checked by:

Drawing Name:
LANDSCAPE PLAN

Project Number: 17-55
Sheet Date: 5-29-17
Sheet Number: