



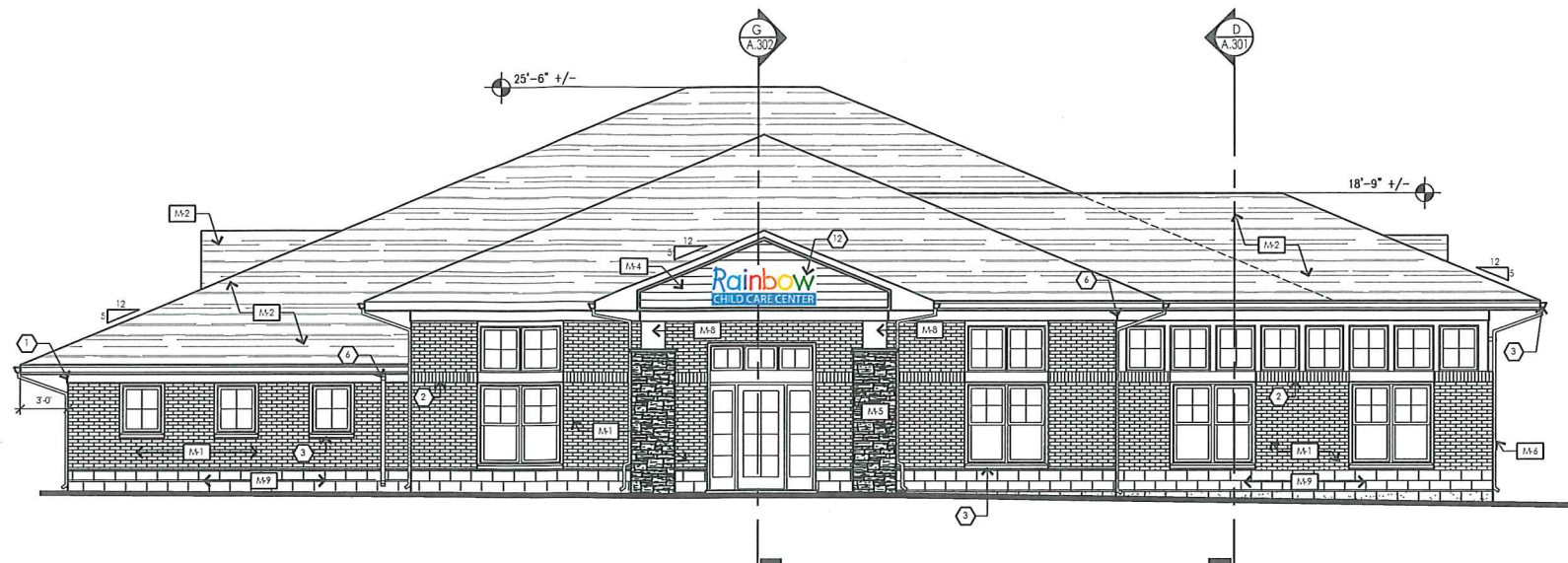
RAINBOW CHILD
CARE CENTER

C-PROTOTYPE
3055 N ANKENY BLVD.
ANKENY, IA 50021

PROJECT NO: 2017.0310
DATE: 07.06.17

A.200
EXTERIOR ELEVATIONS

CHECKED: RC DRAWN: JC



1 FRONT (NORTH) ELEVATION 3/16"= 1'-0"

Exterior Elevation Materials

SYMBOL	ITEM	MANUFACTURER	MODEL	COLOR / FINISH	NOTES
M-1	BRICK	BRAMPTON BRICK	CROSSROADS SERIES	COLOR - JASPER	IF BRICK IS NOT READILY AVAILABLE PROVIDE OPTIONS FOR OWNER TO APPROVE
M-2	ASPHALT SHINGLES	GAF ROOFING	TRI-SEAL HD - LIFETIME SHINGLES	COLOR - WEATHERED WOOD	-
M-3	BREAK METAL TRIM	QUALITY EDGE	TRI-LINE ENGRAINED TRIM COIL	COLOR - 607 (CLAY)	-
M-4	VINYL SIDING	CERTANTEED CORPORATION	DOUBLE 5' CLAPBOARD	MST	-
M-5	STONE VENEER	-	-	-	VER. W/ OWNER FOR MANUFACTURER, MODEL, AND COLOR
M-6	PPE-FIN ALUMINUM GUTTER	MASTIC HOME EXTERIORS	6' GUTTER COIL - 27 GAUGE	COLOR - REBBLESTONE CLAY (VERIFY W/OWNER)	-
M-7	SELS	T.B.D.	LIVESTONE	VARIEGATED	-
M-8	CEDAR TRIM BOARD	-	CEDAR	NATURAL & SEALED	-
M-9	SPURFACE C.M.U.	MICHIGAN CERTIFIED CONCRETE	SPURFACE FACED	VAOLS	IF BLOCK IS NOT READILY AVAILABLE PROVIDE OPTIONS FOR OWNER TO APPROVE

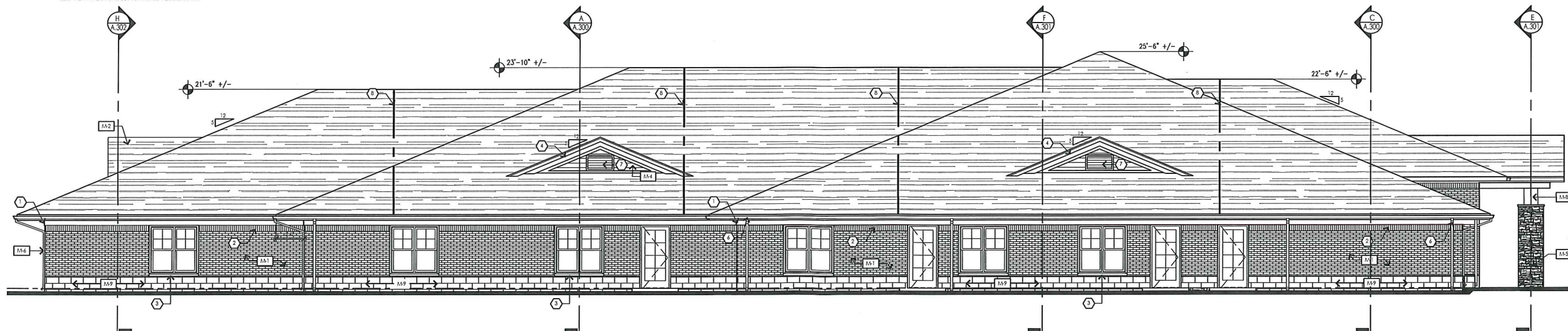
Keyed Elevation Notes:

1. TYPICAL EAVE - SEE DETAIL FOR MORE INFORMATION
2. BRICK SOLDER COURSE (TYP.)
3. SILL SLOPED TO ALLOW WATER RUNOFF WITH DRP EDGE
4. 1X2 TRIM SPD. ON 1X6 PAKE BPD. ON 1X6 SUB-PAKE BPD. WITH PPE-FINISHED ALUMINUM WRAP
5. 1/2" AZTEK PANEL (PAINT)
6. PRE-FINISHED ALUMINUM GUTTER AND DOWNSPOUT - VERIFY CONNECTION DETAIL AND LOCATION WITH CIVIL ENGINEER
7. PROVIDE LOUVERED DORMERS FOR MECHANICAL INTAKE (VER. W/ MECH. DRAWINGS)
8. LINE OF DRAFT STOPPING
9. LINE OF BUILDING BEYOND
10. CONDENSING UNIT. SEE MECH. DRAWINGS FOR EXACT LOCATIONS
11. 60MIL EPDM ROOF FULLY ADHERED
12. PROPOSED 8' X 30' SIGN SHOWN. SIGN TO BE PERMITTED UNDER SEPARATE SUBMITTAL BY SIGN VENDOR.

General Elevation Notes:

1. ALL TRIM BOARDS (JUNO.) WILL BE CLAD IN PPE-FIN. ALUM. - DETERMINE GAUGE FOR RAINBOW CHILD CARE CENTER SPEC.
2. EXTERIOR BRICK IS TO BE STANDARD SIZE - COURSE OUT QUON CORNERS
3. EXTERIOR WINDOWS ARE JELDOWEN. THEY ARE OPERABLE AND HAVE SCREENS. SCREENS ARE TO BE 1/6" MESH OR BETTER.
4. DO NOT SCALE HATCHING. REFER TO BUILDING SECTIONS & WALL SECTIONS FOR PROPER CONSTRUCTION METHODS. A.300 - A.305
5. SIGNAGE TO BE INSTALLED BY G.C. AS DIRECTED BY OWNER

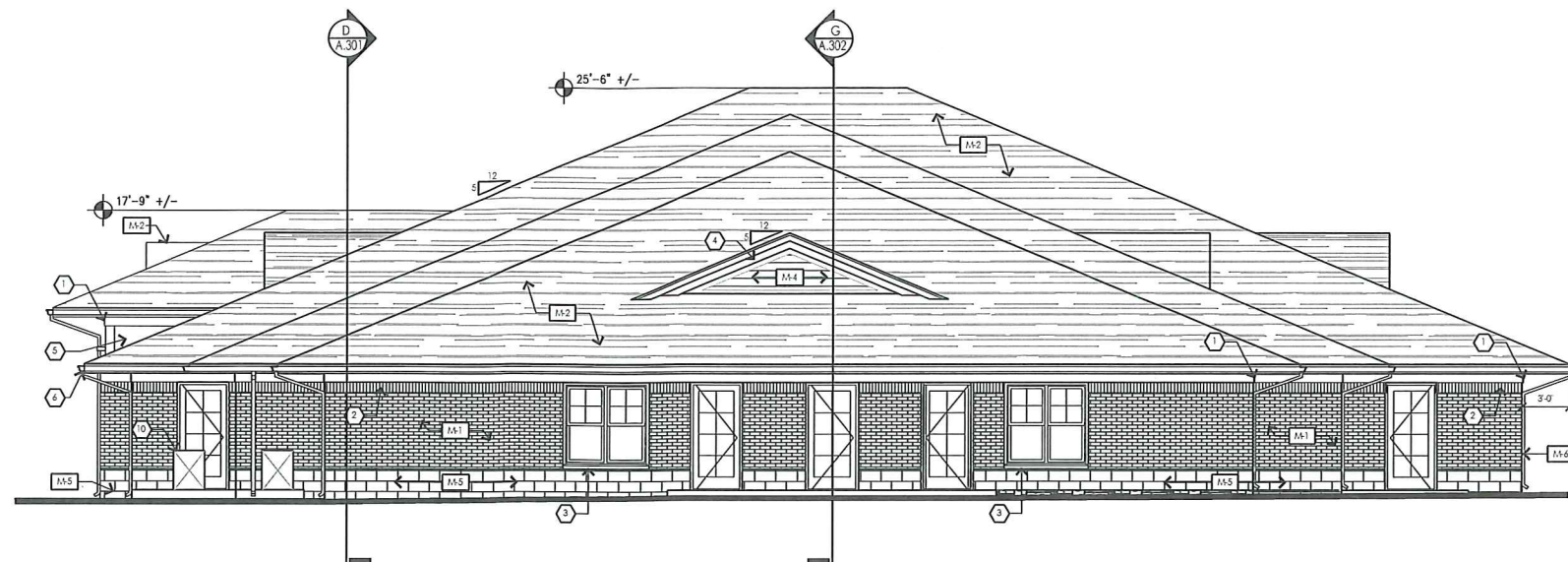
NOTE:
JELDOWEN WINDOWS TO BE PPE-FINISHED W/DBERT SAND



2 LEFT (EAST) ELEVATION 3/16"= 1'-0"

RAINBOW CHILD
CARE CENTERC-PROTOTYPE
3055 N ANKENY BLVD.
ANKENY, IA 50021PROJECT NO: 2017.0310
DATE: 07.06.17A.201
EXTERIOR ELEVATIONS

CHECKED: RC DRAWN: JC



1 REAR (SOUTH) ELEVATION 3/16" = 1'-0"

Exterior Elevation Materials

SYS/SOL	ITEM	MANUFACTURER	MODEL	COLOR / FINISH	NOTES
M-1	BRICK	BRAMPTON BRICK	CROSSROADS SERIES	COLOR - JASPER	IF BRICK IS NOT READILY AVAILABLE PROVIDE OPTIONS FOR OWNER TO APPROVE
M-2	ASPHALT SHINGLES	GAF ROOFING	TWIGLINE HD - LIFETIME SHINGLES	COLOR - WEATHERED WOOD	-
M-3	BREAK METAL TRIM	QUALITY EDGE	TRULINE EMBOSSED TRIM COIL	COLOR - 607 (CLAY)	-
M-4	VINYL SIDING	CERTANTEED COFFINATION	DOUBLE 5" CLAPBOARD	MST	-
M-5	STONE VENEER	-	-	-	VER. W/ OWNER FOR MANUFACTURER, MODEL AND COLOR
M-6	PPE-FRI ALUMINUM GUTTER	MASTIC HOME EXTERIORS	6" GUTTER COIL - 27 GAUGE	COLOR - TERRAZZO CLAY (VERIFY W/OWNER)	-
M-7	SELS	T.B.D.	LIMESTONE	VARIEGATED	-
M-8	CEDAR TRIM BOARD	-	CEDAR	NATURAL & SEALED	-
M-9	SPLITFACE C.M.U.	MICHIGAN CERTIFIED CONCRETE	SPLIT FACED	VAOLS	IF BLOCK IS NOT READILY AVAILABLE PROVIDE OPTIONS FOR OWNER TO APPROVE

NOTE:

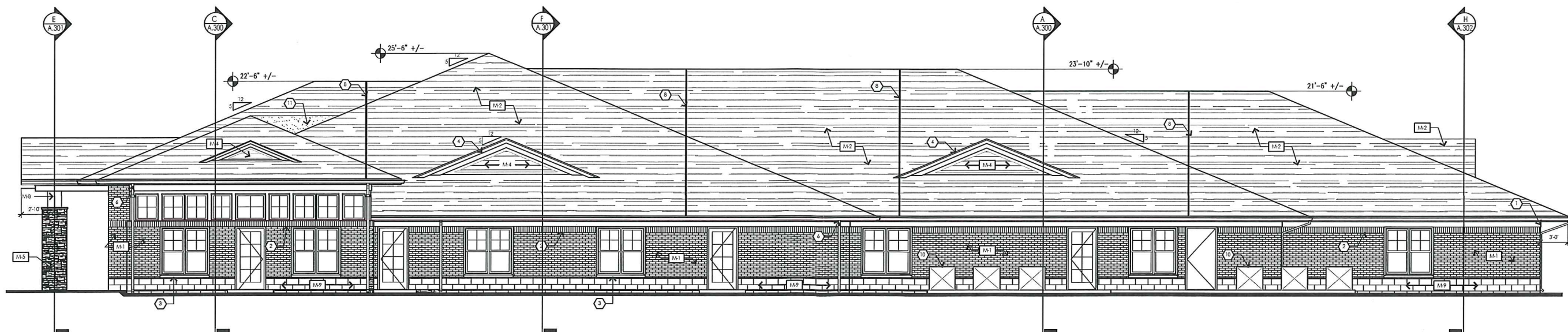
JELD-WEN WINDOWS TO BE PPE-FINISHED W/OBERT SAND

Keyed Elevation Notes:

1. TYPICAL EAVE - SEE DETAIL FOR MORE INFORMATION
2. BRICK SOLDIER COURSE (TYP.)
3. SILL SLOPED TO ALLOW WATER RUNOFF WITH DRIP EDGE
4. 1X2 TRIM BFD. ON 1X6 PAKE BFD. ON 1X4 SUB-PAKE BFD. WITH PPE-FINISHED ALUMINUM WRAP
5. 1/2" AZTEK PANEL (PAINT)
6. PPE-FINISHED ALUMINUM GUTTER AND DOWNSPOUT - VERIFY CONNECTION DETAIL AND LOCATION WITH CIVIL ENGINEER
7. PROVIDE LOUVERED DORMERS FOR MECHANICAL INTAKE/EXHAUST (W/ MECH. DRAWINGS)
8. LINE OF DRAFT STOPPING
9. LINE OF BUILDING BEYOND
10. CONDENSING UNIT. SEE MECH. DRAWINGS FOR EXACT LOCATIONS
11. 60ML EPDM ROOF FULLY ADHERED
12. PROPOSED 8" X 30" SIGN SHOWN. SIGN TO BE PERMITTED UNDER SEPARATE SUBMITTAL BY SIGN VENDOR.

General Elevation Notes:

- 1). ALL TRIM BOARDS (J.W.O.) WILL BE CLAD IN PPE-FRI ALUM. - DETERMINE GAUGE PER RAINBOW CHILD CARE CENTER SPEC.
- 2). EXTERIOR BRICK IS TO BE STANDARD SIZE - COURSE OUT QUOTE IN CORNERS
- 3). EXTERIOR WINDOWS ARE JELD-WEN. THEY ARE OPERABLE AND HAVE SCREENS. SCREENS ARE TO BE 1/4" MESH OR BETTER.
- 4). DO NOT SCALE HATCHING. REFER TO BUILDING SECTIONS & WALL SECTIONS FOR PROPER CONSTRUCTION METHODS. A.300 - A.305
- 5). SIGNAGE TO BE INSTALLED BY G.C. AS DIRECTED BY OWNER



2 RIGHT (WEST) ELEVATION 3/16" = 1'-0"

