

SEAL:  
THIS DOCUMENT IS NOT FOR CONSTRUCTION  
UNLESS THE ARCHITECT OR ENGINEER'S  
SIGNATURE AND SEAL APPEAR BELOW.I HEREBY CERTIFY THAT THE PORTION OF THIS  
TECHNICAL SUBMISSION DESCRIBED BELOW  
WAS PREPARED BY ME OR UNDER MY DIRECT  
SUPERVISION AND RESPONSIBLE CHARGE, I  
AM A DULY LICENSED ARCHITECT UNDER THE  
LAWS OF THE STATE OF FLORIDA.

PRINTED OR TYPED NAME

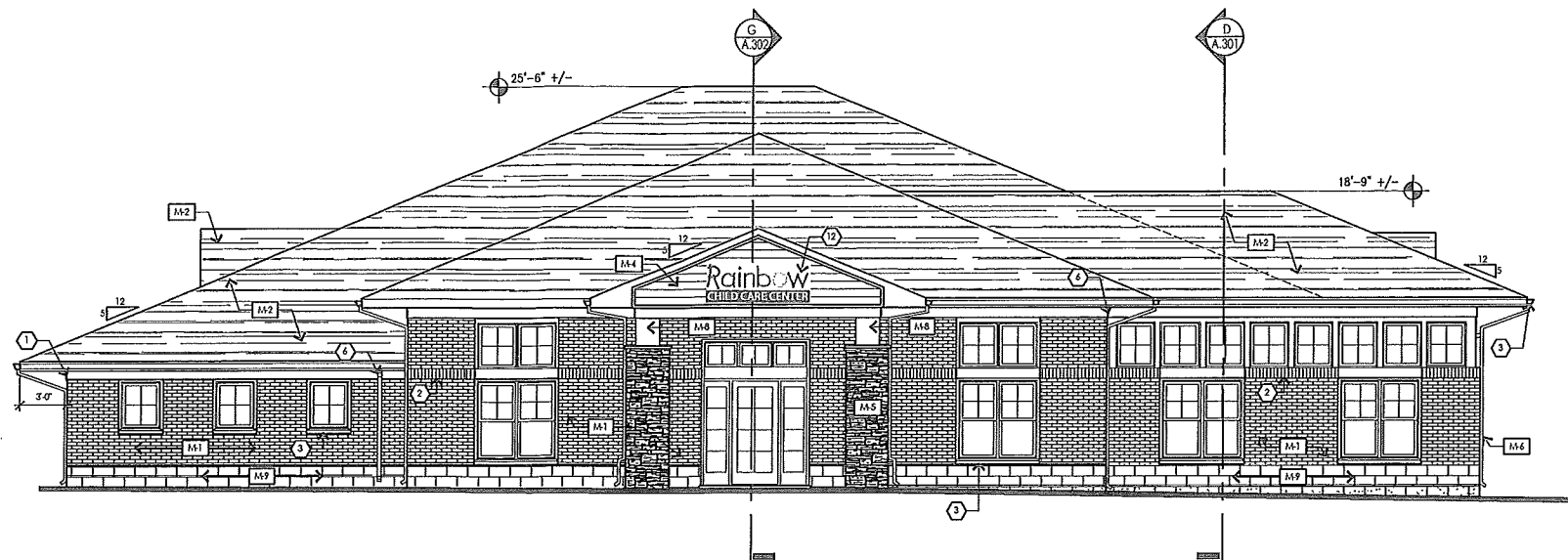
SIGNATURE DATE

LICENSE EXPIRES DATE ISSUED

PAGES OR SHEETS COVERED BY THIS SEAL:

NO DATE REMARKS  
REVISIONSRAINBOW CHILD  
CARE CENTERC-PROTOTYPE  
3055 N ANKENY BLVD.  
ANKENY, IA 50021PROJECT NO: 2017.0310  
DATE: 07.06.17A.200  
EXTERIOR ELEVATIONS

CHECKED: RC DRAWN: JC



1 FRONT (NORTH) ELEVATION 3/16" = 1'-0"

## Exterior Elevation Materials

SYMBOL	ITEM	MANUFACTURER	MODEL	COLOR / FINISH	NOTES
M-1	BRICK	BRampton BRICK	CROSSROADS SERIES	COLOR - JASPER	IF BRICK IS NOT READILY AVAILABLE PROVIDE OPTIONS FOR OWNER TO APPROVE
M-2	ASPHALT SHINGLES	GAF ROOFING	TRI-BERKLYE HD - LIFE-TIME SHINGLES	COLOR - WEATHERED WOOD	-
M-3	BREAK METAL TRIM	QUALITY EDGE	TRULINE EMBOSSED TRIM COIL	COLOR - B07 (CLAY)	-
M-4	VINYL SIDING	CERTANIZED CORPORATION	DOUBLE 5" CLAPBOARD	MST	-
M-5	STONE VENEER	-	-	-	VER. W/ OWNER FOR MANUFACTURER, MODEL, AND COLOR
M-6	PREFIN ALUMINUM GUTTER	MASTIC HOME EXTERIORS	4" GUTTER COIL - 27 GAUGE	COLOR - PEBBLESTONE CLAY (VERIFY W/OWNER)	-
M-7	SELS	T.B.D.	LIVESTONE	VARIEGATED	-
M-8	CEDAR TRIM BOARD	-	CEDAR	NATURAL & SEALED	-
M-9	SPLURFACE C&M.U.	MICHIGAN CERTIFIED CONCRETE	SPLIT FACED	VAOLIS	IF BLOCK IS NOT READILY AVAILABLE PROVIDE OPTIONS FOR OWNER TO APPROVE

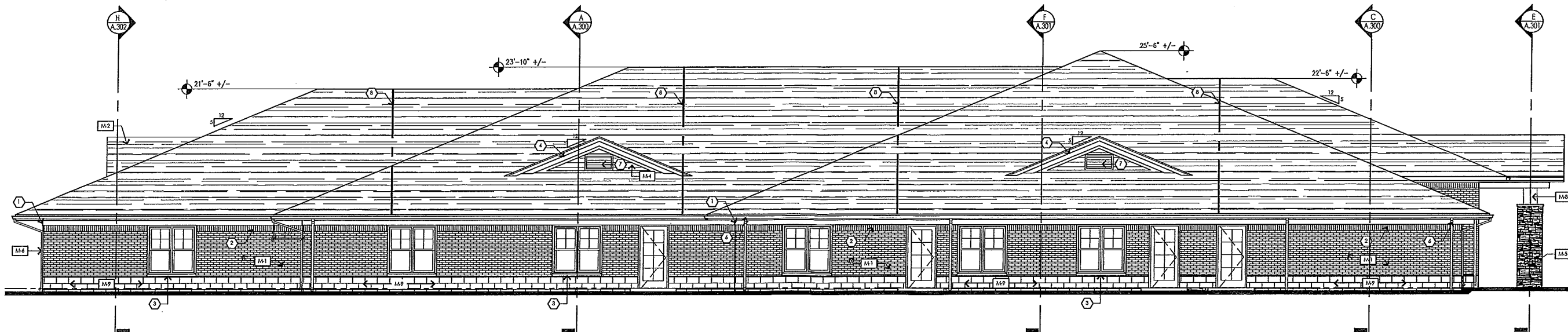
NOTE:  
JELD-WEN WINDOWS TO BE PRE-FINISHED W/ DIBERT SAND

## Keyed Elevation Notes:

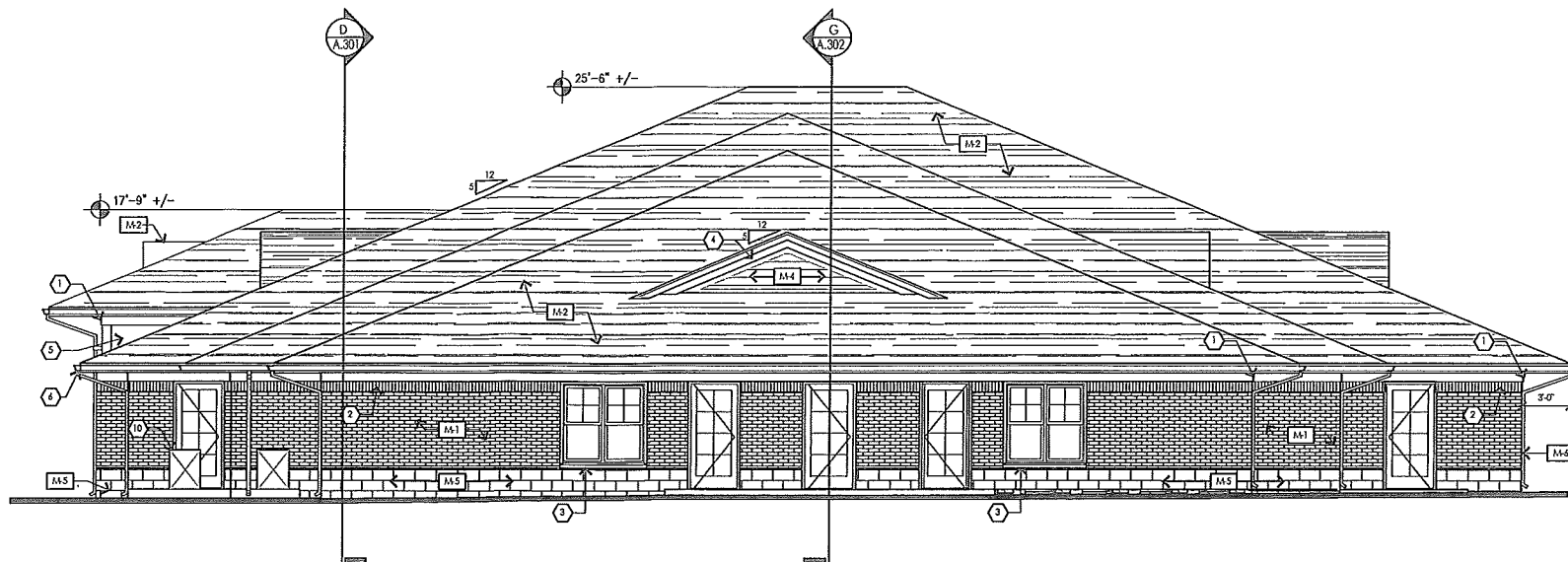
1. TYPICAL EAVE - SEE DETAIL FOR MORE INFORMATION
2. BRICK SOLDIER COURSE (TYP.)
3. SILL SLOPED TO ALLOW WATER RUNOFF WITH DRP EDGE
4. 1X2 TRIM BRD. ON 1X6 RAKE BRD. ON 1X6 SUB-RAKE BRD. WITH PRE-FINISHED ALUMINUM WRAP
5. 1/2" AZTEK PANEL (PART)
6. PRE-FINISHED ALUMINUM GUTTER AND DOWNSPOUT - VERIFY CONNECTION DETAIL AND LOCATION WITH CIVIL ENGINEER
7. PROVIDE LOUVERED DORMERS FOR MECHANICAL INTAKE/EXH. W/ MECH. DRAWINGS
8. LINE OF DRAFT STOPPING
9. LINE OF BUILDING BEYOND
10. CONDENSING UNIT. SEE MECH. DRAWINGS FOR EXACT LOCATIONS
11. 40ML EPDM ROOF FULLY ADHERED
12. PROPOSED 6" X 30" SIGN SHOWN. SIGN TO BE PERMITTED UNDER SEPARATE SUBMITAL BY SIGN VENDOR.

## General Elevation Notes:

- 1). ALL TRIM BOARDS (J.H.O.) WILL BE CLAD BY PREFIN. ALUM. - DETERMINE GAUGE PER RAINBOW CHILD CARE CENTER SPECS.
- 2). EXTERIOR BRICK IS TO BE STANDARD SIZE - COURSE OUT QUORN CORNERS
- 3). EXTERIOR WINDOWS ARE JELD-WEN. THEY ARE OPERABLE AND HAVE SCREENS. SCREENS ARE TO BE 16 MESH OR BETTER.
- 4). DO NOT SCALE HATCHING. REFER TO BUILDING SECTIONS & WALL SECTIONS FOR PROPER CONSTRUCTION METHODS. A.300 - A.305
- 5). SIGNAGE TO BE INSTALLED BY G.C. AS DIRECTED BY OWNER



2 LEFT (EAST) ELEVATION 3/16" = 1'-0"



1 REAR (SOUTH) ELEVATION 3/16" = 1'-0"

### Exterior Elevation Materials

SYMBOL	ITEM	MANUFACTURER	MODEL	COLOR / FINISH	NOTES
M-1	BRICK	BRAMPTON BRICK	CROSSROADS SERIES	COLOR - JASPER	IF BRICK IS NOT READILY AVAILABLE PROVIDE OPTIONS FOR OWNER TO APPROVE
M-2	ASPHALT SHINGLES	GAF ROOFING	TIMBERLINE HD - LIFETIME SHINGLES	COLOR - WEATHERED WOOD	-
M-3	BREAK METAL TRIM	QUALITY EDGE	TRIMLINE EMBOSSED TRIM COIL	COLOR - 607 (CLAY)	-
M-4	VINYL SIDING	CERTANTEED CORPORATION	DOUBLE 5" CLAPBOARD	LAST	-
M-5	STONE VENEER	-	-	-	VER. W/ OWNER FOR MANUFACTURER, MODEL AND COLOR
M-6	PRE-FIN ALUMINUM GUTTER	MASTIC HOME EXTERIORS	6" GUTTER COIL - 27 GAUGE	COLOR - PEBBLESTONE CLAY (VERIFY W/OWNER)	-
M-7	SELS	T.B.D.	LIVESTONE	VARIEGATED	-
M-8	CEDAR TRIM BOARD	-	CEDAR	NATURAL & SEALED	-
M-9	SPURFACE C.M.U.	ANCHUSAN CERTIFIED CONCRETE	SPURFACE FACED	VAOLS	IF BLOCK IS NOT READILY AVAILABLE PROVIDE OPTIONS FOR OWNER TO APPROVE

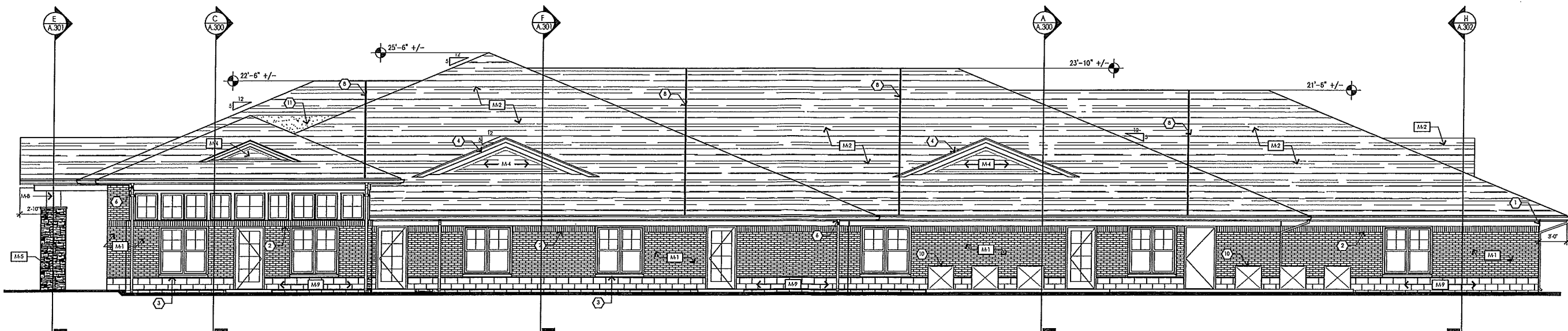
NOTE:  
JELD-WEN WINDOWS TO BE PRE-FINISHED W/DESERT SAND

### Keyed Elevation Notes:

1. TYPICAL EAVE-SEE DETAIL FOR MORE INFORMATION
2. BRICK SOLDER COURSE (TYP)
3. S&L SLOPED TO ALLOW WATER RUNOFF WITH DRP EDGE
4. 1X2 TRIM BRD. ON 1X4 RAKE BRD. ON 1X6 SUB-RAKE BRD. WITH PRE-FINISHED ALUMINUM WRAP
5. 1/2" AZITEK PANEL (PAINT)
6. PRE-FINISHED ALUMINUM GUTTER AND DOWNSPOUT-VERIFY CONNECTION DETAIL AND LOCATION WITH CIVIL ENGINEER
7. PROVIDE LOUVERED DOWNERS FOR MECHANICAL INTAKE (VER. W/ MECH. DRAWINGS)
8. LINE OF DRAFT STOPPING
9. LINE OF BUILDING BEYOND
10. CONDENSING UNIT. SEE MECH. DRAWINGS FOR EXACT LOCATIONS
11. 60ML EPDM ROOF FULLY ADHERED
12. PROPOSED BY X 307 SIGN SHOWN. SIGN TO BE FURNISHED UNDER SEPARATE SUBMITTAL BY SIGN VENDOR.

### General Elevation Notes:

- 1). ALL TRIM BOARDS (M.L.O.) WILL BE CLAD IN PRE-FIN. ALUM. - DETERMINE GAUGE PER RAINBOW CHILD CARE CENTER SPECS.
- 2). EXTERIOR BRICK IS TO BE STANDARD SIZE - COURSE OUT QUON CORNERS
- 3). EXTERIOR WINDOWS ARE JELD-WEN. THEY ARE OPERABLE AND HAVE SCREENS. SCREENS ARE TO BE 16 MESH OR BETTER.
- 4). DO NOT SCALE HATCHING. REFER TO BUILDING SECTIONS & WALL SECTIONS FOR PROPER CONSTRUCTION METHODS. A.300 - A.305
- 5). SIGNAGE TO BE INSTALLED BY G.C. AS DIRECTED BY OWNER



2 RIGHT (WEST) ELEVATION 3/16" = 1'-0"

