

INDEX LEGEND

SURVEYOR'S NAME:  
ERIN D. GRIFFIN  
SNYDER & ASSOCIATES, INC.  
2727 SW SNYDER BOULEVARD  
ANKENY, IOWA 50023  
515-964-2020  
EGRIFFIN@SNYDER-ASSOCIATES.COM  
SERVICE PROVIDED BY:  
SNYDER & ASSOCIATES, INC.  
SURVEY LOCATED:  
LOTS 3 & 4, HIDDEN CREEK PLAT 2  
PT. NE1/4 NE1/4  
SEC. 16-80-24  
REQUESTED BY:  
HUNZIKER CONSTRUCTION SERVICES, INC.  
RETURN TO:  
ERIN D. GRIFFIN  
SNYDER & ASSOCIATES, INC.  
2727 SW SNYDER BOULEVARD  
ANKENY, IOWA 50023

PUBLIC INGRESS/EGRESS EASEMENT

PUBLIC INGRESS/EGRESS EASEMENT DESCRIPTION

THE EAST 25.00 FEET OF THE WEST 48.00 FEET OF LOTS 3 AND 4, HIDDEN CREEK PLAT 2, AN OFFICIAL PLAT, EXCEPT THE NORTH 12.50 FEET THEREOF, NOW INCLUDED IN AND FORMING A PART OF THE CITY OF ANKENY, POLK COUNTY, IOWA.

OWNER

HUNZIKER LAND DEVELOPMENT COMPANY, L.L.C.  
105 S. 16TH STREET  
AMES, IA 50010-8009

DATE OF SURVEY

APRIL 2, 2020

LEGEND

Survey

Section Corner  
1/2" Rebar, Yellow Plastic Cap #19710  
(Unless Otherwise Noted)  
ROW Marker  
ROW Rail  
Control Point  
Bench Mark  
Platted Distance  
Measured Bearing & Distance  
Recorded As  
Deed Distance  
Calculated Distance  
Centerline  
Section Line  
1/4 Section Line  
1/4 1/4 Section Line  
Easement Line

Found

▲  
●  
■  
H  
⊙  
P  
M  
R  
D  
C

Set

△  
○  
□  
H



I hereby certify that this land surveying document was prepared and the related survey work was performed by me or under my direct personal supervision and that I am a duly licensed Professional Land Surveyor under the laws of the State of Iowa.

Erin D. Griffin, PLS Date 6/29/20

License Number 19710

My License Renewal Date is December 31, 2021

Pages or sheets covered by this seal:  
Sheets 1 & 2 of 2

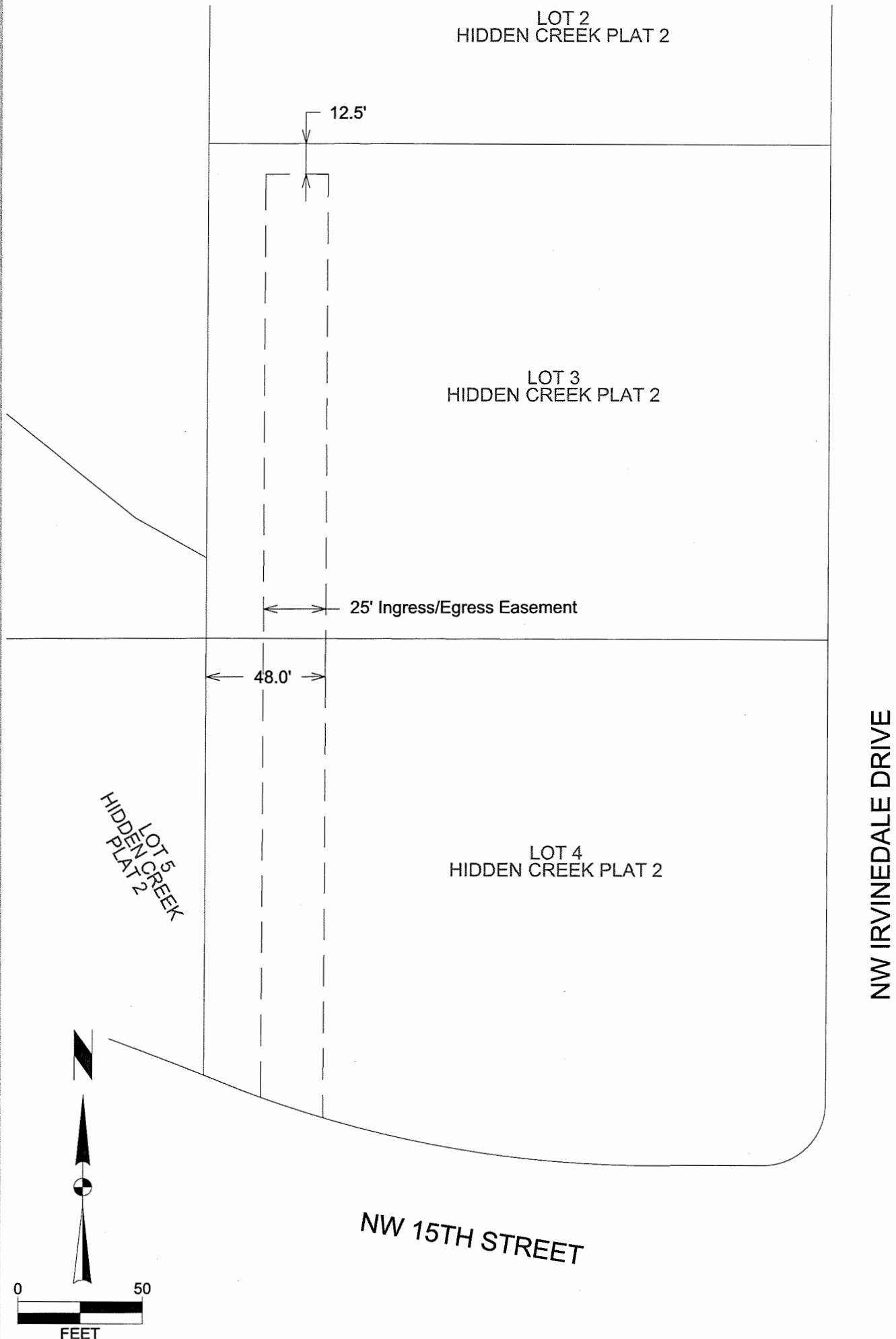



SURVEYED FOR:  
HUNZIKER CONSTRUCTION  
SERVICES, INC.  
105 S. 16TH STREET  
AMES, IA 50010-8009

SURVEYED BY:  
SNYDER & ASSOCIATES, INC.  
2727 S.W. SNYDER BLVD.  
ANKENY, IA 50023  
(515) 964-2020  
www.snyder-associates.com

FN: 119.1174  
DATE: 04-28-20  
REVISIONS:  
REV1  
REV2  
REV3

**PUBLIC INGRESS/EGRESS EASEMENT**



 <b>SNYDER &amp; ASSOCIATES</b>	SURVEYED FOR: HUNZIKER CONSTRUCTION SERVICES, INC. 105 S. 16TH STREET AMES, IA 50010-8009	SURVEYED BY: SNYDER & ASSOCIATES, INC. 2727 S.W. SNYDER BLVD. ANKENY, IA 50023 (515) 964-2020 www.snyder-associates.com	FN: 119.1174 DATE: 04-28-20 REVISIONS: REV1 REV2 REV3 <b>SHEET 2 OF 2</b>
--	---	--	---