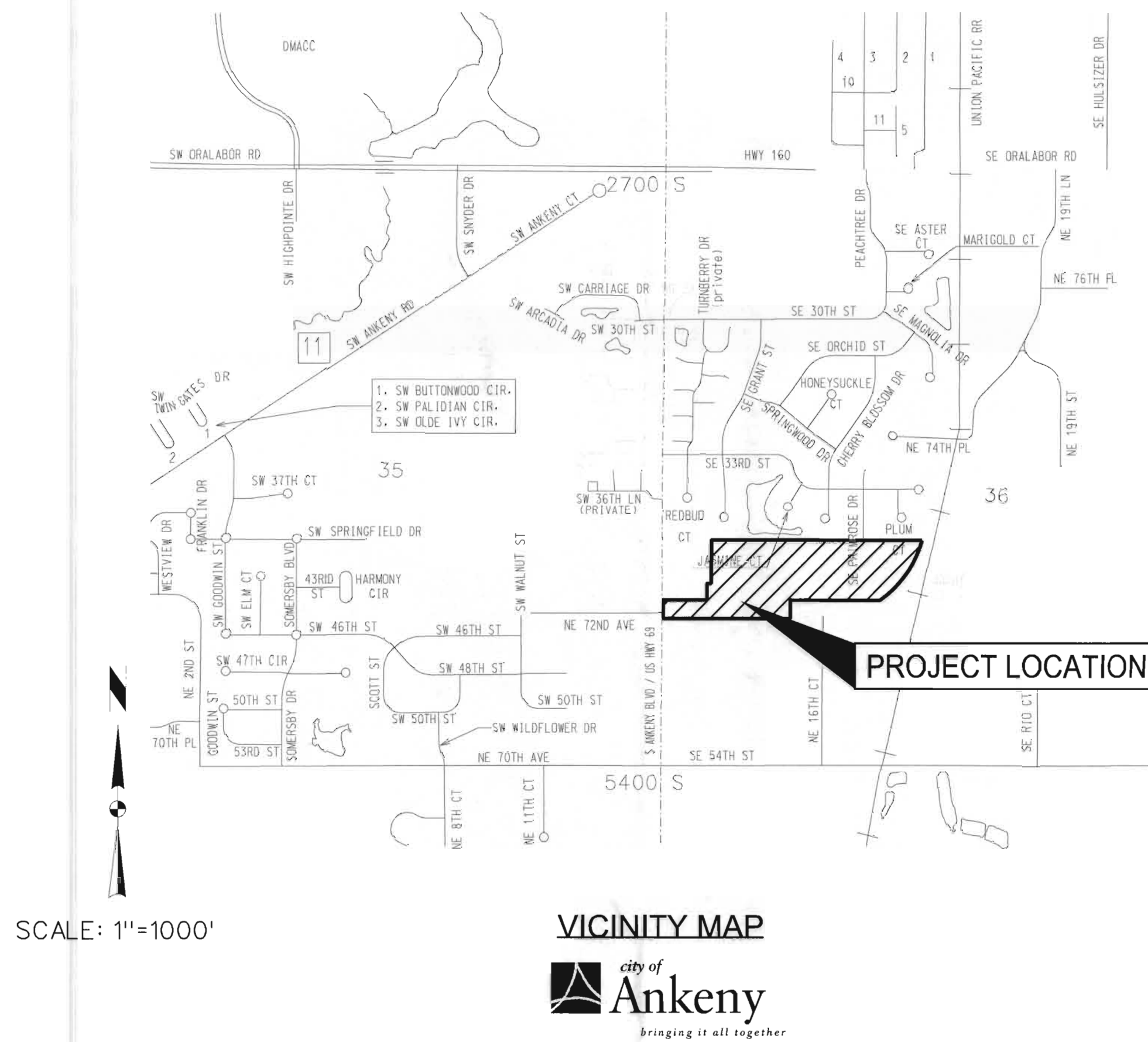


SITE PLAN  
FOR  
WILLOW RUN PLAT 1  
CITY OF ANKENY, POLK COUNTY, IOWA

**DEVELOPER**  
PAR PARTNERS, LLC  
317 S. ANKENY BLVD  
ANKENY, IOWA 50023  
TOM DAVIES  
(515) 964-2814

**OWNER/APPLICANT**  
A. DENNIS E. JORDAN  
211 SE WANDA DR  
ANKENY, IA 50021  
B. JOSEPH & ELIZABETH ORIGER  
7275 NE 14TH ST  
ANKENY, IA 50023  
C. LEROY BROWN III  
751 HIGH RD  
NORWALK, IA 50211  
D. NELLO MEDICI LIFE ESTATE (NORTH)  
4315 NE 8TH ST  
DES MOINES, IA 50313  
E. NELLO MEDICI LIFE ESTATE (SOUTH)  
4315 NE 8TH ST  
DES MOINES, IA 50313  
F. SANTE & NELLO MEDICI  
7225 NE 14TH ST  
ANKENY, IA 50023  
G. JEROME & JOSEPHINE SCHMITT  
7208 NE 16TH CT  
ANKENY, IA 50021



- INDEX OF SHEETS**
- 1. TITLE SHEET
  - 2. PROJECT INFORMATION
  - 3-5. DIMENSION AND UTILITY PLAN
  - 6-8. GRADING AND EROSION CONTROL PLAN
  - 9-10. PLANTING PLAN

ROLL-CALL  
Plan & Zoning Commission  
Ankeny, IA

Date	Aye	Nay	Pass	Absent
Anderson	Aye	Nay	Pass	Absent
Endler	Aye	Nay	Pass	Absent
Flack	Aye	Nay	Pass	Absent
Hauhsart	Aye	Nay	Pass	Absent
Hunter	Aye	Nay	Pass	Absent
Odson	Aye	Nay	Pass	Absent
Rippel	Aye	Nay	Pass	Absent
West	Aye	Nay	Pass	Absent
Whiting	Aye	Nay	Pass	Absent
Ayes: 7	Nay: 0	Pass: 0	Absent: 0	

APPROVED  
J. Ripper Chairperson  
E. Johnson Secretary

RECEIVED  
SEP 22 2017  
CITY OF ANKENY

**WILLOW RUN PLAT 1**

**TITLE SHEET**

**SNYDER & ASSOCIATES, INC.**

**SNYDER & ASSOCIATES**

Project No: 1160394

Sheet 1 of 10

ANKENY, IOWA  
2727 S.W. SNYDER BLVD.  
ANKENY, IOWA 50023  
515-964-2020 | www.snyder-associates.com

**1160394**

Project No: 1160394

Sheet 1 of 10

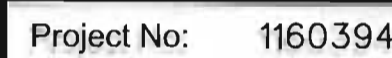
MARK	Engineer: KMM	Checked By: BKC	REVISION	DATE	BY
1	REVISED PER CITY COMMENTS	08/18/17	08/18/17	08/18/17	AMS
2	REVISED PER CITY COMMENTS	08/18/17	08/18/17	08/18/17	AMS





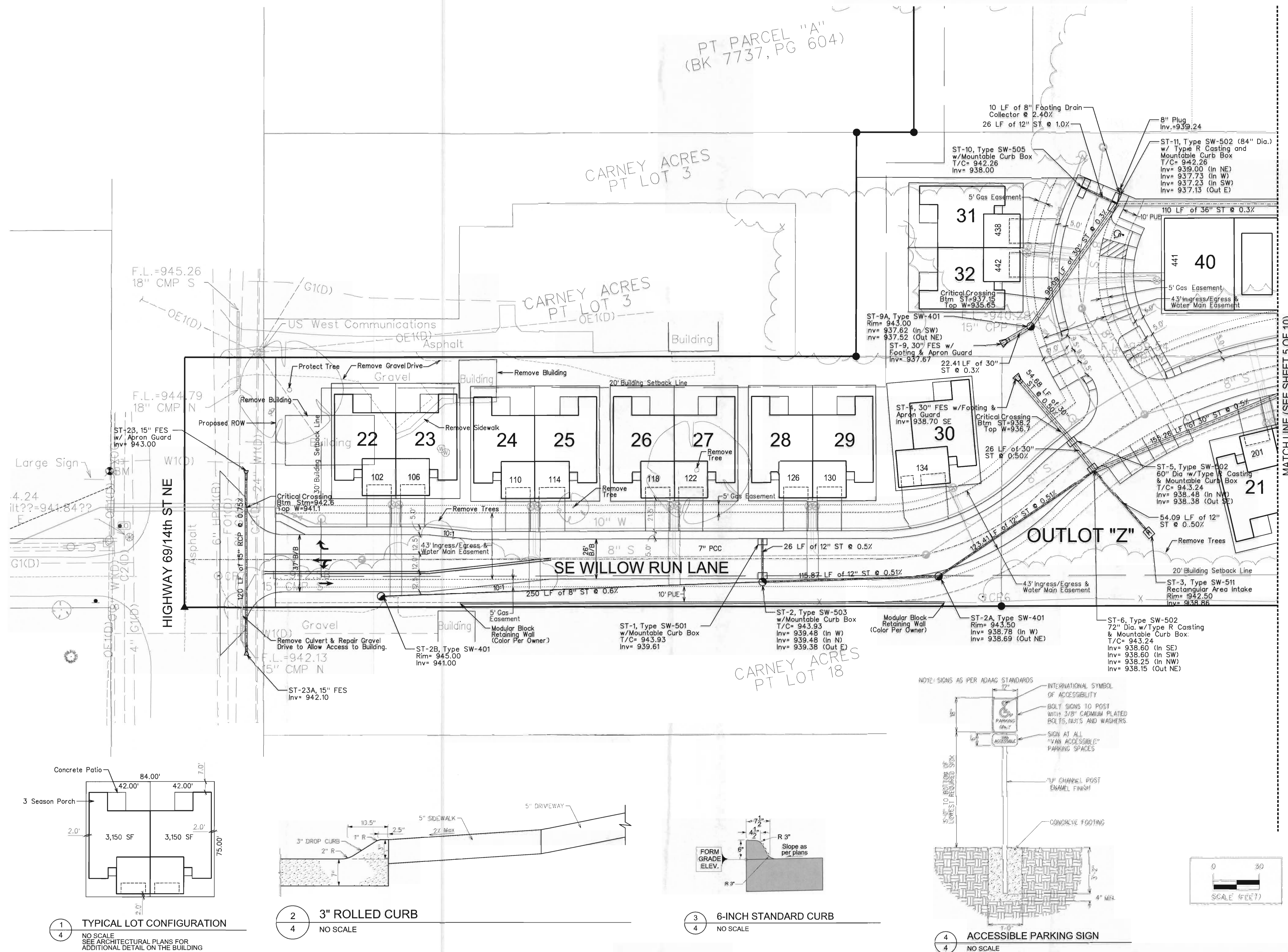


## **DIMENSION AND UTILITY PLAN**



**SNYDER & ASSOCIATES, INC.**







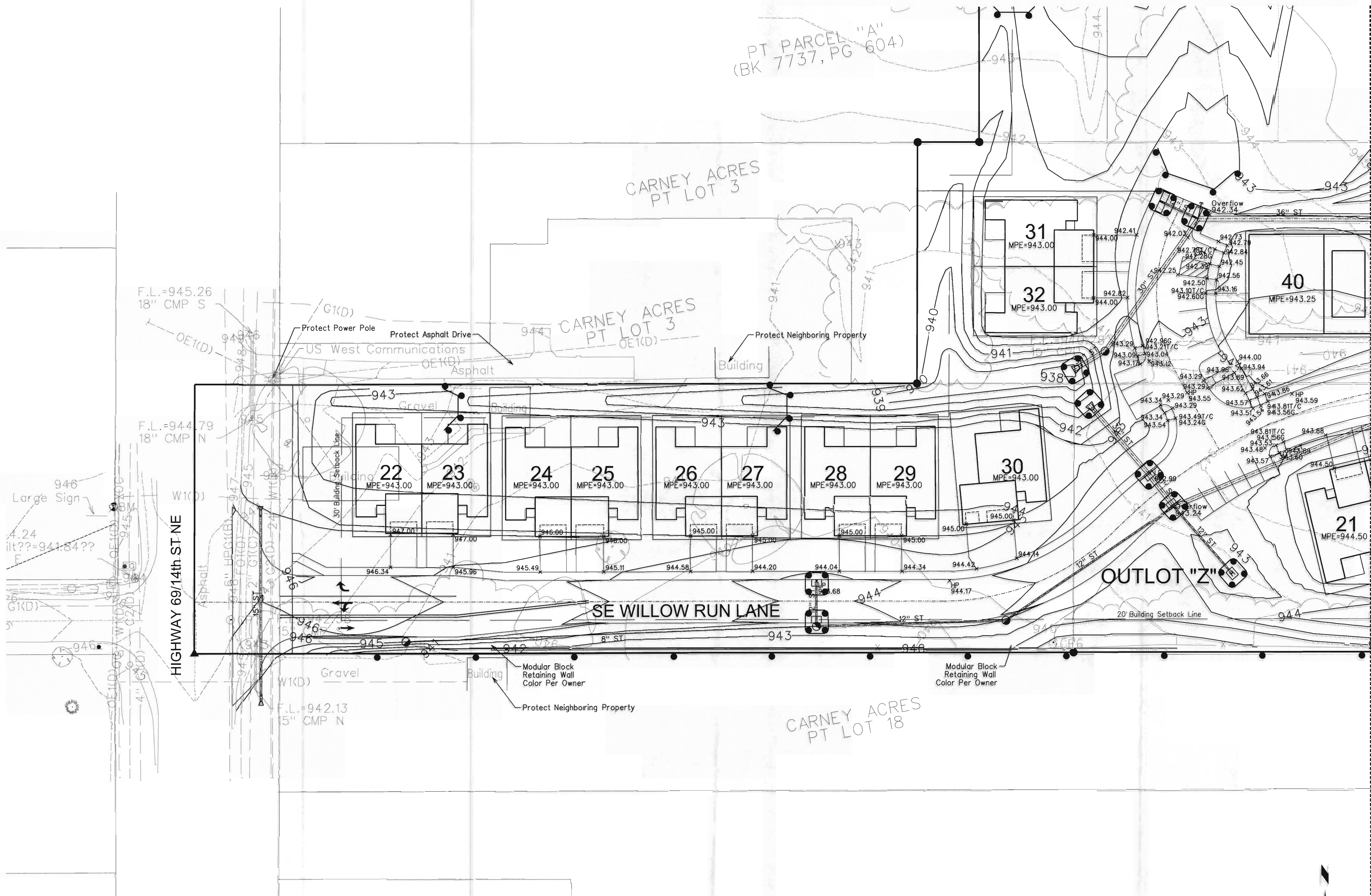




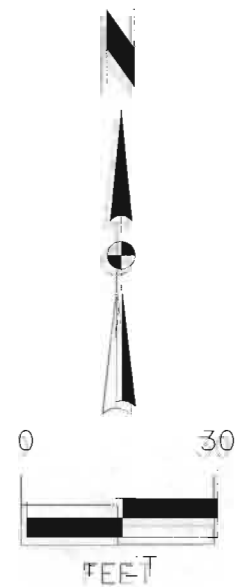




9/22/2017 9:29:51 AM  
C:\Users\j\OneDrive\Documents\Projects\Willow Run\Willow Run Plat 1.dwg  
SNYDER & ASSOCIATES, INC.  
Project No. 1160394  
Sheet 7 of 10



MATCH LINE (SEE SHEET 8 OF 10)



# WILLOW RUN PLAT 1

GRADING AND EROSION CONTROL PLAN

**SNYDER & ASSOCIATES, INC.**



Project No. 1160394  
Sheet 7 of 10

ANKENY, IOWA

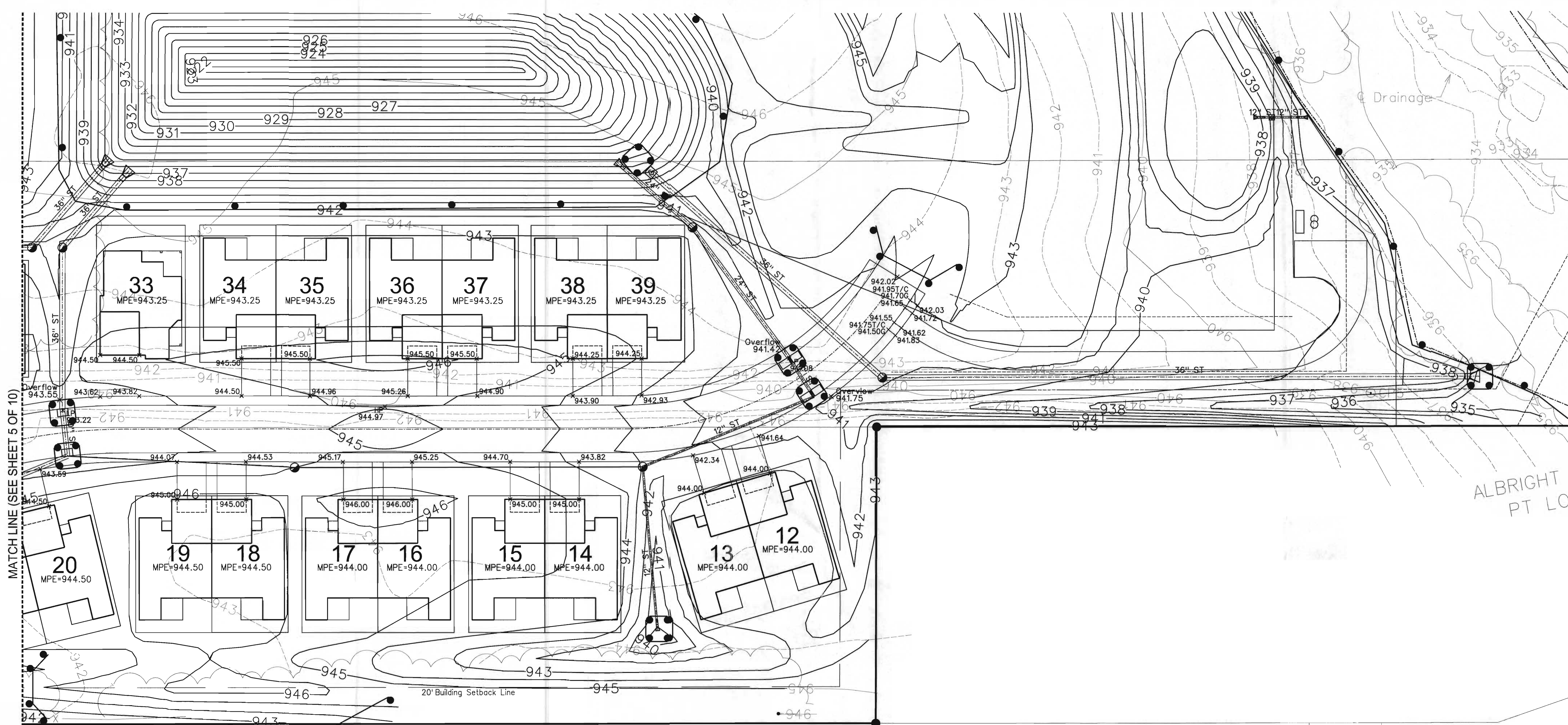
2727 S.W. SNYDER BLVD.  
ANKENY, IOWA 50023  
515-964-2020 | www.snyder-associates.com

MARK	REVISION	DATE	BY
1	REVISED PER CITY COMMENTS	08/18/17	KMM
2	REVISED PER CITY COMMENTS	09/22/17	AMS

Engineer: KMM  
Checked By: BKC  
Scale: 1"=30'  
Technician: AWS  
Date: 08/18/17  
Field Bk:  
Project No: 1160394  
Sheet 7 of 10



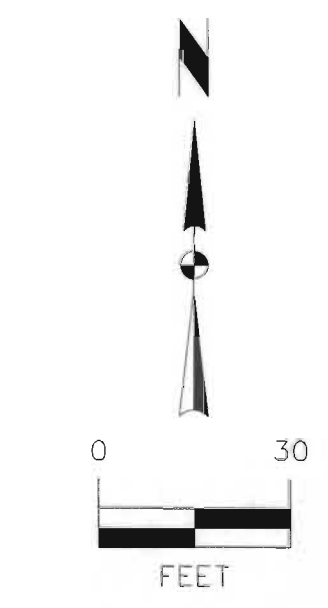
9/22/2017 2:25:52 PM C:\Users\ASW\OneDrive\Projects\160394\160394.dwg 160394\_08P2.dwg



MATCH LINE (SEE SHEET 5 OF 10)

VIRGINIO PIAGENTINI EST LOT 1

CARNEY ACRES PT LOT 6



Project No: 1160394  
Sheet 8 of 10

WILLOW RUN PLAT 1

GRADING AND EROSION CONTROL PLAN

ANKENY, IOWA

SNYDER & ASSOCIATES, INC.

2727 S.W. SNYDER BLVD.  
ANKENY, IOWA 50023  
515-964-2020 | www.snyder-associates.com

2	REVISED PER CITY COMMENTS	09/22/17	AMS
1	REVISED PER CITY COMMENTS	09/08/17	AMS
MARK	REVISION	DATE	BY
Engineer: KMM	Checked By: BKC	Scale: 1"=30'	
Technician: AWS	Date: 08/18/17	Field Bk:	Pg:
Project No:	1160394		Sheet 8 of 10







