

ARCHITECT AND INTERIOR DESIGNER
ETHOS DESIGN GROUP,
119 SECOND STREET, PO BOX 169
POLK CITY, IA 50226
Tel. 515.984.3077

MECHANICAL AND ELECTRICAL ENGINEER
KCL ENGINEERING
300 4TH STREET
WEST DES MOINES, IA 50265
Tel. 515.724.7938



MARK	DATE	DESCRIPTION
------	------	-------------

MANAGEMENT INFORMATION.

PROJECT	2018.187
PRINCIPAL IN CHARGE : TIM OLSON	PROJECT ARCHITECT : DP
DRAWN BY : HRH	CHECKED BY : TO

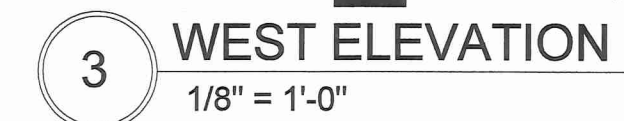
© 2019 ETHOS DESIGN GROUP, INC.
THESE DOCUMENTS HAVE BEEN PREPARED SPECIFICALLY FOR THE PROJECT REFERENCED ABOVE. THEY ARE NOT TO BE USED FOR OTHER PROJECTS OR IN LOCATIONS OTHER THAN SPECIFIED WITHOUT THE WRITTEN APPROVAL AND PARTICIPATION OF ETHOS DESIGN GROUP, INC.


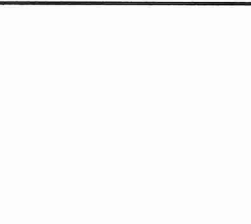
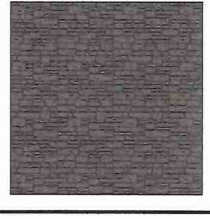
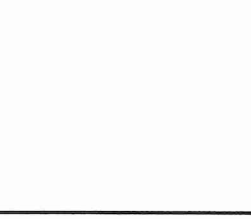
SHEET TITLE.

EXTERIOR
ELEVATIONS

SHEET NO. _____

A200



PATTERN ON ELEVATIONS	MATERIAL PHOTO	DESCRIPTION
		<p>HARDIPLANK LAP SIDING - COLOR TO MATCH EXISTING BUILDING, PAINTED</p>
		<p>STONE - FULL BED AT ALL EXTERIOR APPLICATIONS. SEE SPECS</p>
<p>EXTERIOR FINISHES - GENERAL NOTES</p> <p>A. ALL PARAPET COPING, FASCIA, & FLASHING TO BE PRE-FINISH METAL. COLOR - EXTRA DARK BRONZE</p> <p>B. WINDOWS, DOORS, AND DOOR FRAMES TO BE PRE FINISHED ALUMINUM. COLOR - EXTRA DARK BRONZE</p> <p>C. AT WALL TAGS REFER TO WALL TYPE LEGEND ON SHEET A101</p>		

SHEET TITLE.

EXTERIOR
ELEVATIONS