

RECEIVED  
JUL 26 2019  
CITY OF ANKENY

**SITE PLAN**

**FOR**

**THE DUPPS COMPANY - BUILDING EXPANSIONS**

**CITY OF ANKENY, POLK COUNTY, IOWA**

**OWNER/APPLICANT**  
THE DUPPS COMPANY  
1429 SE CORTINA DRIVE,  
ANKENY, IA 50021  
CONTACT: BRENT HALL  
PHONE: (515) 964-1110



VICINITY MAP

NOT TO SCALE

**INDEX OF SHEETS**

C100	TITLE SHEET
C101	PROJECT INFORMATION
C102	PARTIAL SITE SURVEY
C103	DEMOLITION PLAN
C200	DIMENSION, UTILITY, & PLANTING PLAN
C300	GRADING & EROSION CONTROL PLAN

	I hereby certify that this Engineering Document was prepared by me or under my direct personal supervision and that I am a duly Licensed Professional Engineer under the Laws of the State of Iowa.	
	<i>Erik J. Nikkel</i>	<i>7/26/19</i>
	Erik J. Nikkel, P.E.	Date
	License Number 18678	
	My License Renewal Date is December 31, 2019	
Pages or sheets covered by this seal:		
<u>C100 - C300</u>		

**THE DUPPS COMPANY EXPANSION**

**TITLE SHEET**

**ANKENY, IOWA**

**SNYDER & ASSOCIATES, INC. |**



Project No: 119.0404.01

Sheet C100

2727 S.W. SNYDER BLVD  
ANKENY, IOWA 50023  
515-964-2020 | www.snyder-associates.com

Project No: 119.0404.01

Sheet C100

GENERAL NOTES

- A. NOTIFY UTILITY PROVIDERS PRIOR TO BEGINNING ANY CONSTRUCTION ACTIVITIES AND COORDINATE WITH UTILITY PROVIDERS AS NECESSARY DURING CONSTRUCTION. CONTRACTOR IS RESPONSIBLE FOR DETERMINING EXISTENCE, EXACT LOCATION, AND DEPTH OF ALL UTILITIES. PROTECT ALL UTILITY LINES AND STRUCTURES NOT SHOWN FOR REMOVAL OR MODIFICATION. ANY DAMAGES TO UTILITY ITEMS NOT SHOWN FOR REMOVAL OR MODIFICATION SHALL BE REPAIRED TO THE UTILITY OWNER'S SPECIFICATIONS AT THE CONTRACTOR'S EXPENSE.
- B. CONSTRUCTION OF ALL IMPROVEMENTS SHALL CONFORM TO THE 2019 SUDAS STANDARD SPECIFICATIONS AND THE ANKENY SUPPLEMENTAL SPECIFICATIONS.
- C. LENGTH OF UTILITIES SHOWN ON PLANS ARE DIMENSIONED FROM CENTERLINE OF STRUCTURE TO CENTERLINE OF STRUCTURE.
- D. ALL TRAFFIC CONTROL SHALL BE PROVIDED IN ACCORDANCE WITH REQUIREMENTS SET FORTH IN THE MANUAL ON UNIFORM TRAFFIC CONTROL DEVICES (MUTCD). WHEN CONSTRUCTION ACTIVITIES OBSTRUCT PORTIONS OF THE ROADWAY, FLAGGERS SHALL BE PROVIDED. FLAGGERS SHALL CONFORM TO THE MUTCD IN APPEARANCE, EQUIPMENT AND ACTIONS.
- E. NOTIFY OWNER, ENGINEER, AND CITY OF ANKENY AT LEAST 48 HOURS PRIOR TO BEGINNING WORK.
- F. CONSTRUCT MANHOLES AND APPURTENANCES AS WORK PROGRESSES. BACKFILL WITH SUITABLE MATERIAL AND COMPACT TO 95% MAXIMUM DENSITY.
- G. SAW-CUT FULL DEPTH PAVEMENT TO NEAREST JOINT FOR ALL PAVEMENT REMOVALS.
- H. DIMENSIONS, BUILDING LOCATION, UTILITIES AND GRADING OF THIS SITE ARE BASED ON AVAILABLE INFORMATION AT THE TIME OF DESIGN. DEVIATIONS MAY BE NECESSARY IN THE FIELD. ANY SUCH CHANGES OR CONFLICTS BETWEEN THIS PLAN AND FIELD CONDITIONS ARE TO BE REPORTED TO THE ARCHITECT/ENGINEER PRIOR TO STARTING CONSTRUCTION. THE CONTRACTOR SHALL BE RESPONSIBLE FOR LAYOUT VERIFICATION OF ALL SITE IMPROVEMENTS PRIOR TO CONSTRUCTION.
- I. CONTRACTOR TO LOAD AND TRANSPORT ALL MATERIALS CONSIDERED TO BE UNDESIRABLE TO BE INCORPORATED INTO THE PROJECT TO AN APPROVED OFF-SITE WASTE SITE.
- J. CONTRACTOR TO STRIP AND STOCKPILE TOPSOIL FROM ALL AREAS TO BE CUT OR FILLED. RESPREAD TO MINIMUM 6" DEPTH TO FINISH GRADES.
- K. ALL PROPOSED CONTOURS AND SPOT ELEVATIONS SHOWN ARE FINISHED GRADES AND/OR TOP OF PAVING SLAB (GUTTER), UNLESS OTHERWISE NOTED.
- L. THE CONTRACTOR IS RESPONSIBLE FOR CLEANING DIRT AND DEBRIS FROM NEIGHBORING STREETS, DRIVEWAYS, AND SIDEWALKS CAUSED BY CONSTRUCTION ACTIVITIES IN A TIMELY MANNER.
- M. THE ADJUSTMENT OF ANY EXISTING UTILITY APPURTENANCES TO FINAL GRADE IS CONSIDERED INCIDENTAL TO THE SITE WORK.
- N. THE CONTRACTOR SHALL BE RESPONSIBLE FOR INSTALLING EROSION CONTROL MEASURES AS NECESSARY. CONTRACTOR SHALL ALSO BE RESPONSIBLE FOR MAINTAINING ANY EXISTING EROSION CONTROL MEASURES ON SITE AT THE TIME OF CONSTRUCTION. GRADING AND SOIL EROSION CONTROL CODE REQUIREMENTS SHALL BE MET BY CONTRACTOR. A GRADING PERMIT IS REQUIRED FOR THIS PROJECT.
- O. CONTRACTOR TO COORDINATE NATURAL GAS, ELECTRICAL, TELEPHONE AND ANY OTHER FRANCHISE UTILITY SERVICES WITH UTILITY SERVICE PROVIDER, CITY OF ANKENY, AND THE OWNER PRIOR TO CONSTRUCTION.
- P. CONTRACTOR TO VERIFY ALL UTILITY CROSSINGS AND MAINTAIN MINIMUM 18" VERTICAL AND HORIZONTAL CLEARANCE BETWEEN UTILITIES. CONTRACTOR TO COORDINATE UTILITY ROUTING TO BUILDING AND VERIFY CONNECTION LOCATIONS AND INVERTS PRIOR TO CONSTRUCTION.

PROPERTY DESCRIPTION

(PER BK 16324, PG 479)  
PARCEL 1 (PARCEL NO. 181/00529-015-000)  
THE WEST 200 FEET OF LOT 4 IN METROPOLITAN INDUSTRIAL ACRES, AN OFFICIAL PLAT, NOW INCLUDED IN AND FORMING A PART OF THE CITY OF ANKENY, POLK COUNTY, IOWA.

PARCEL 2 (PARCEL NO. 181/00529-014-002)  
THE WEST 180 FEET OF THE EAST 360 FEET OF LOT 4 IN METROPOLITAN INDUSTRIAL ACRES, AN OFFICIAL PLAT, NOW INCLUDED IN AND FORMING A PART OF THE CITY OF ANKENY, POLK COUNTY, IOWA.

PARCEL 3 (PARCEL NO. 181/00529-016-001)  
THE WEST 200 FEET OF LOT 5 IN METROPOLITAN INDUSTRIAL ACRES, AN OFFICIAL PLAT, NOW INCLUDED IN AND FORMING A PART OF THE CITY OF ANKENY, POLK COUNTY, IOWA.

PARCEL 4 (PARCEL NO. 181/00529-016-002)  
THE EAST 360 FEET OF LOT 5 IN METROPOLITAN INDUSTRIAL ACRES, AN OFFICIAL PLAT, NOW INCLUDED IN AND FORMING A PART OF THE CITY OF ANKENY, POLK COUNTY, IOWA.

PARCEL 5 (PARCEL NO. 181/00529-017-002)  
THE WEST TWO HUNDRED FEET (W200') OF THE NORTH ONE-HALF (N½) OF LOT SIX (6) METROPOLITAN INDUSTRIAL ACRES, AND OFFICIAL PLAT, NOW INCLUDED IN AND FORMING A PART OF THE CITY OF ANKENY, POLK COUNTY, IOWA.

PARCEL 6 (PARCEL NO. 181/00529-017-001)  
THE EAST 360 FEET OF THE NORTH 100 FEET OF LOT 6 IN METROPOLITAN INDUSTRIAL ACRES, AN OFFICIAL PLAT, NOW INCLUDED IN AND FORMING A PART OF THE CITY OF ANKENY, POLK COUNTY, IOWA.

PROPERTY ADDRESS

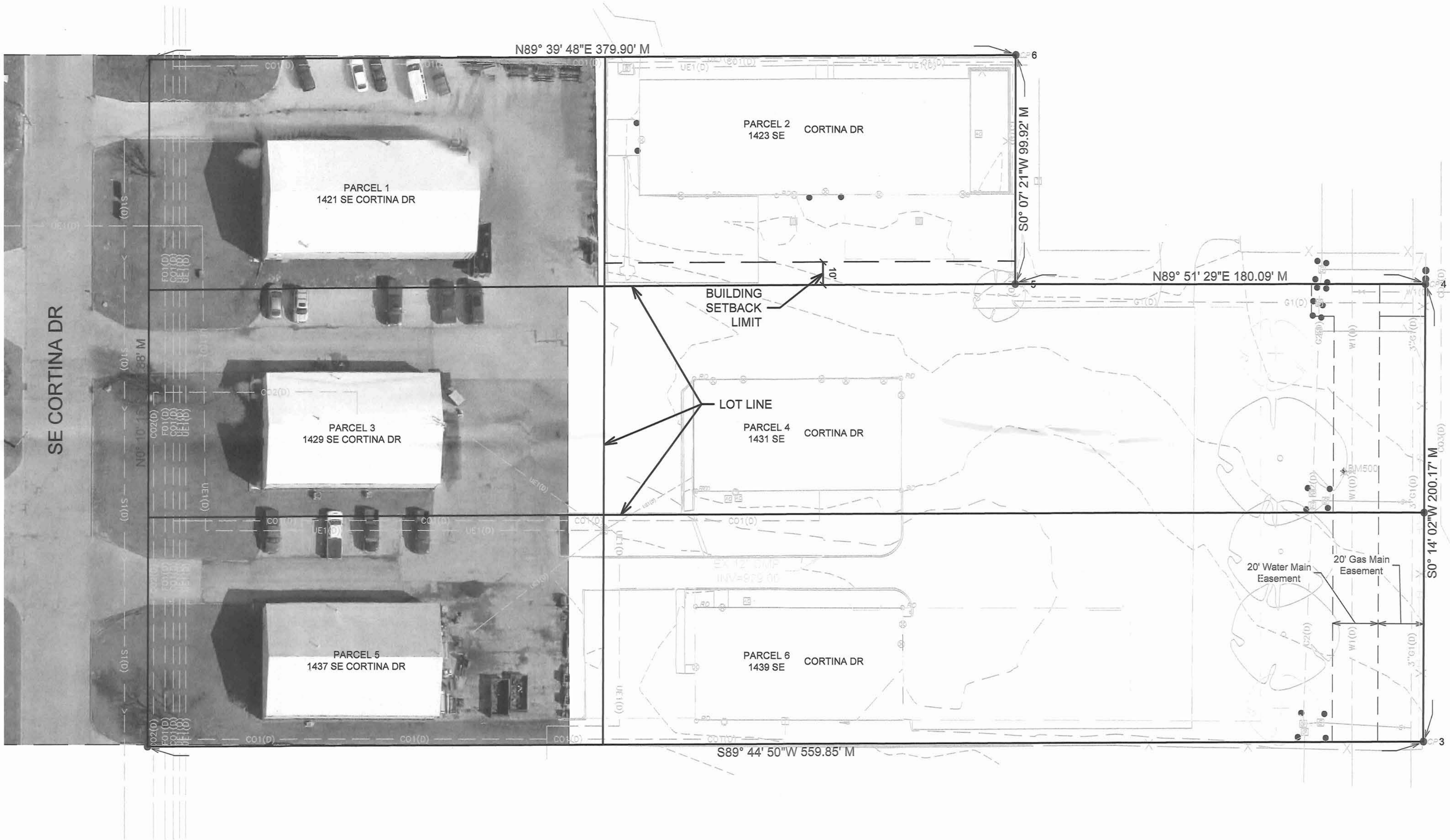
1421, 1423, 1429, 1431, 1437, 1439 SE CORTINA DRIVE,  
ANKENY, IOWA 50021

ZONING

M-1: LIGHT INDUSTRIAL DISTRICT

PROJECT IMPROVEMENTS

- BUILDING EXPANSION ON EXISTING BUILDING OF 1423 SE CORTINA DR
- BUILDING EXPANSION ON EXISTING BUILDING OF 1439 SE CORTINA DR.
- PAVEMENT EXPANSION ON EAST SIDE OF 1431 AND 1439 SE CORTINA DR.
- PAVEMENT EXPANSION ON WEST SIDE OF EXISTING BUILDING OF 1439 SE CORTINA DR.



THE DUPPS COMPANY - BUILDING EXPANSIONS

PRJOECT INFORMATION

ANKENY, IOWA

SNYDER & ASSOCIATES, INC. |

2727 S.W. SNYDER BLVD  
ANKENY, IOWA 50023  
515-584-2020 | www.snyder-associates.com



Project No: 119.0404.01

Sheet C101

Project No: 119.0404.01

Sheet C101

ANKENY, IOWA

PRJOECT INFORMATION

SNYDER & ASSOCIATES, INC. |

2727 S.W. SNYDER BLVD  
ANKENY, IOWA 50023  
515-584-2020 | www.snyder-associates.com



Project No: 119.0404.01

Sheet C101

Project No: 119.0404.01

Sheet C101

FEATURES	EXISTING
Spot Elevation	x 93.0
Contour Elevation	60
Fence (Barbed, Field, Hog)	—SF—
Fence (Chain Link)	—X—
Fence (Wood)	—O—
Fence (Silt)	—O—
Tree Line	~~~~~
Tree Stump	—^—
Deciduous Tree \ \ Shrub	—( )— (X)
Coniferous Tree \ \ Shrub	—( * )— ( * )
Communication	— — — COU1(*)
Overhead Communication	— — — COU1(*)
Fiber Optic	— — — FOU1(*)
Underground Electric	— — — UE1(*)
Overhead Electric	— — — OE1(*)
Gas Main with Size	— — — 1"GI1(*)
High Pressure Gas Main with Size	— — — 4"HPGI1(*)
Water Main with Size	— — — 8"WI1(*)
Sanitary Sewer with Size	> — — — 8"SI1(*) >
Duct Bank	— — — UE(8)
Test Hole Location for SUE w/D	— — — 81

	12" RCP	12" RCP
Storm Sewer with Size		
Storm Manhole		
Single Storm Sewer Intake		
Double Storm Sewer Intake		
Fire Hydrant		
Fire Hydrant on Building		
Water Main Valve		
Water Service Valve		
Well		
Utility Pole		
Guy Anchor		
Utility Pole with Light		
Utility Pole with Transformer		
Street Light		
Yard Light		
Electric Box		
Electric Transformer		
Traffic Sign		
Communication Pedestal		
Communication Manhole		
Communication Handhole		
Fiber Optic Manhole		
Fiber Optic Handhole		
Gas Valve		
Gas Manhole		
Gas Apparatus		
Fence Post or Guard Post		
Underground Storage Tank		
Above Ground Storage Tank		
Sign		
Satellite Dish		
Mailbox		
Sprinkler Head		
Irrigation Control Valve		

QUALITY LEVELS OF UTILITIES ARE SHOWN IN THE PARENTHESES WITH THE UTILITY TYPE AND WHEN APPLICABLE, SIZE. THE QUALITY LEVELS ARE BASED ON THE CI / ASCE 38-02 STANDARD.

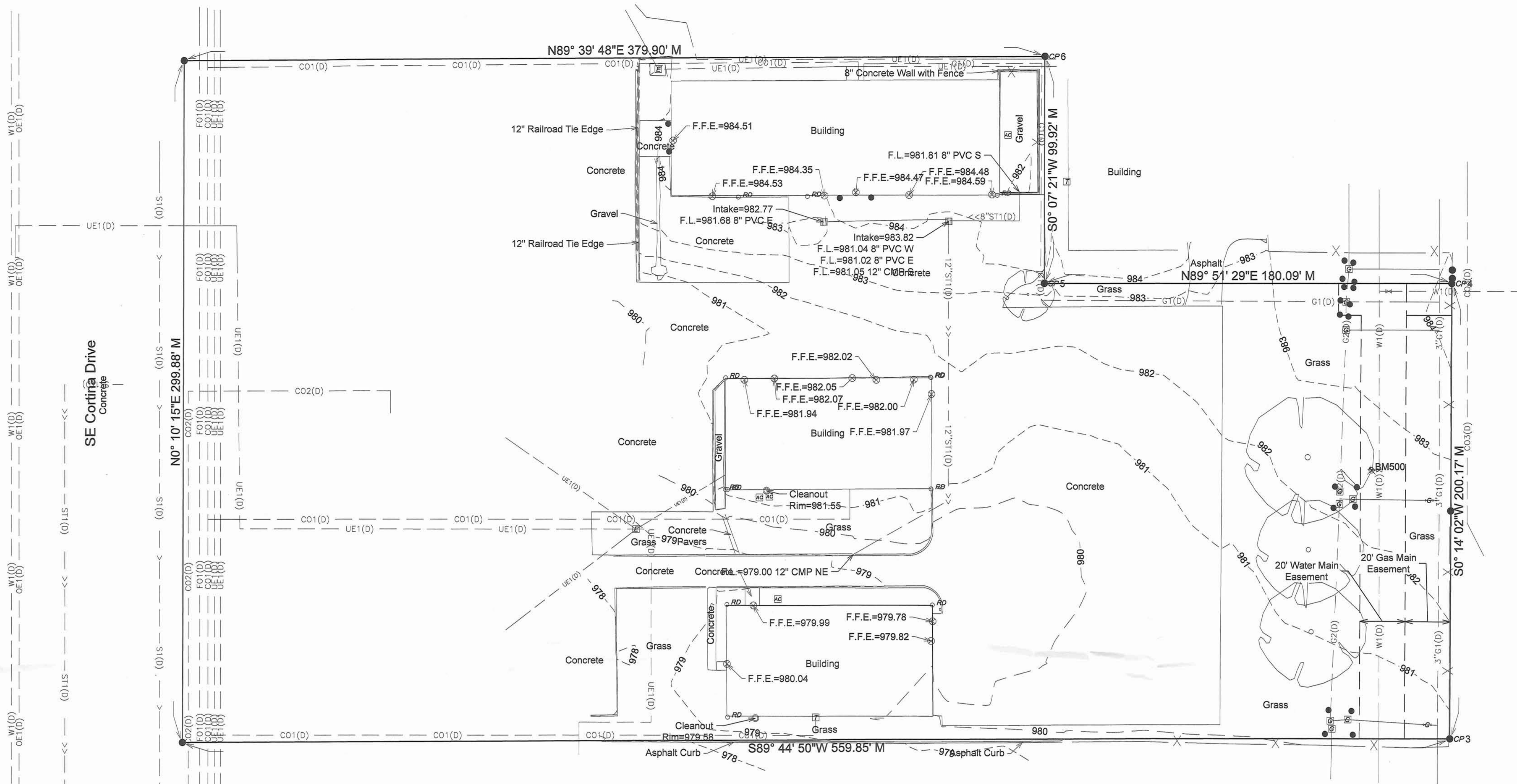
QUALITY LEVEL (C) INFORMATION IS OBTAINED BY SURVEYING AND PLOTTING VISIBLE ABOVE-GROUND UTILITY FEATURES AND USING PROFESSIONAL JUDGMENT IN CORRELATING THIS INFORMATION WITH QUALITY D INFORMATION.

QUALITY LEVEL (B) INFORMATION IS OBTAINED THROUGH THE APPLICATION OF APPROPRIATE SURFACE GEOPHYSICAL METHODS TO DETERMINE THE EXISTENCE AND APPROXIMATE HORIZONTAL POSITION OF SUBSURFACE UTILITIES.

QUALITY LEVEL (A) IS HORIZONTAL AND VERTICAL POSITION OF UNDERGROUND UTILITIES OBTAINED BY ACTUAL EXPOSURE OR VERIFICATION OF PREVIOUSLY EXPOSED SUBSURFACE UTILITIES, AS WELL AS THE TYPE, SIZE, CONDITION, MATERIAL, AND OTHER CHARACTERISTICS.

UTILITY CONTACT FOR MAPPING INFORMATION SHOWN AS RECEIVED FROM THE IOWA ONE CALL DESIGN REQUEST SYSTEM, TICKET NUMBER 551903057.

ST1-STORM SEWER S1-SANITARY SEWER W1-WATER MAIN	CITY OF ANKENY (WATER) SHAWN BUCKNER 515-963-3524 sbuckner@ankenyiowa.gov	OE1-OVERHEAD ELECTRIC UE1-UNDERGROUND ELECTRIC G1-GAS MAIN	MIDAMERICAN ENERGY Theresa McGuire 515-252-6632 MECDMS@DesignLocates@midamerican.com
	CITY OF ANKENY (SANITARY SEWER) ROGER MCFARLAND 515-965-6483 RMcfFarland@ankenyiowa.gov	CLEAR PER EMAIL RECEIVED	MCI/VERIZON Dean Boyers 469-886-4238 dean.boyers@verizon.com
FO1-FIBER OPTIC	ANKENY COMMUNITY SCHOOLS DARCY COWAN 515-289-8691 darcy.cowan@ankenyschools.org	G2-GAS MAIN	NORTHERN NATURAL GAS COMPANY Keith Good 515-202-5067 keith.good@nngco.com
CO1-COMMUNICATION	CENTURYLINK Ray Montoya 515-263-7396 raymond.montoya@centurylink.com	CLEAR PER EMAIL RECEIVED	MEDIACOM COMMUNICATIONS CORP Paul May 515-246-2252 pmay@mediacomcc.com
CO2-COMMUNICATION	AUREON NETWORK SERVICES Jeff Klocko 515-830-0445 jeff.klocko@aureon.com	CO3-COMMUNICATION	UNITE PRIVATE NETWORKS, LLC Joe Kilzer 816-425-3556 upngis@upnfiber.com



## PARTIAL SITE SURVEY

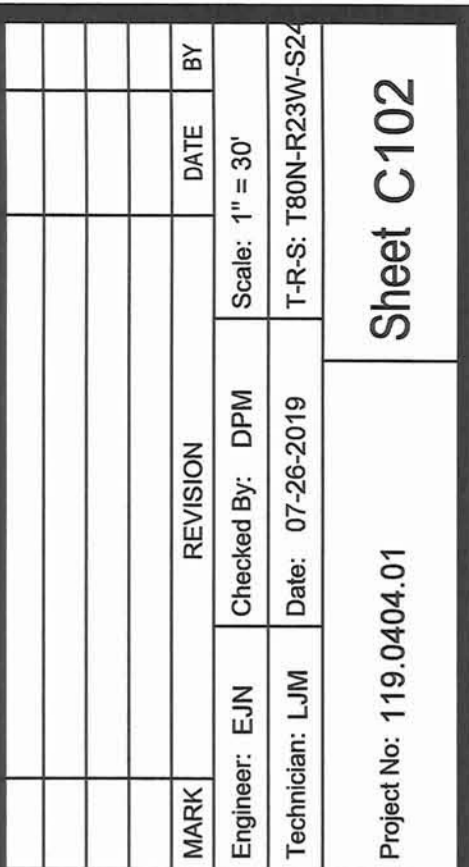
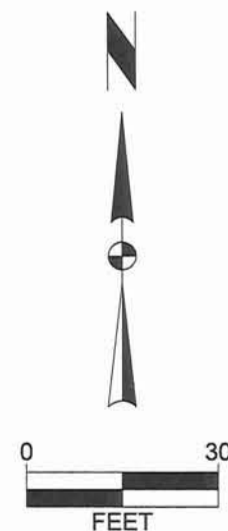
THE UTILITIES SHOWN HAVE BEEN LOCATED FROM FIELD SURVEY INFORMATION AND/OR RECORDS OBTAINED. THE SURVEYOR MAKES NO GUARANTEE THAT THE UTILITIES OR SUBSURFACE FEATURES SHOWN COMPRISE ALL SUCH ITEMS IN THE AREA, EITHER IN SERVICE OR ABANDONED. THE SURVEYOR FURTHER DOES NOT WARRANT THAT THE UTILITIES OR SUBSURFACE FEATURES SHOWN ARE IN THE EXACT LOCATION INDICATED EXCEPT WHERE NOTED AS QUALITY LEVEL A.

IOWA REGIONAL COORDINATE SYSTEM ZONE 8 (AMES-DES MOINES)  
NAD83(2011)(EPOCH 2010.00) IARTN DERIVED - US SURVEY FEET

CP3	N=7534048.48 E=18534361.24 Z=981.06 5/8" REBAR WITH YELLOW PLASTIC CAP, EAST SIDE OF FENCE, SOUTHEAST PROPERTY CORNER. (AS SHOWN ON SURVEY)
CP4	N=7534248.66 E=18534362.03 Z=983.98 1/2" REBAR WITH YELLOW PLASTIC CAP, WEST SIDE OF FENCE, NORTHEAST PROPERTY CORNER. (AS SHOWN ON SURVEY)
CP5	N=7534248.19 E=18534181.87 Z=982.73 1/2" REBAR, SOUTHEAST OF BUILDING. (AS SHOWN ON SURVEY)
CP6	N=7534348.17 E=18534182.27 Z=983.77 1/2" REBAR, NORTHEAST OF BUILDING. (AS SHOWN ON SURVEY)

NORTH AMERICAN VERTICAL DATUM OF 1988 (NAVD88 - GEOID12A)  
IARTN DERIVED - US SURVEY FEET

BM500 ELEV=984.55  
ARROW ON HYDRANT ON EAST SIDE OF SITE. (AS SHOWN ON SURVEY)



2727 S.W. SNYDER BLVD  
ANKENY, IOWA 50023  
515-964-2020 | [www.snyder-associates.com](http://www.snyder-associates.com)

# THE DUPPS COMPANY - BUILDING EXPANSIONS

## PARTIAL SITE SURVEY

**SNYDER & ASSOCIATES, INC.**



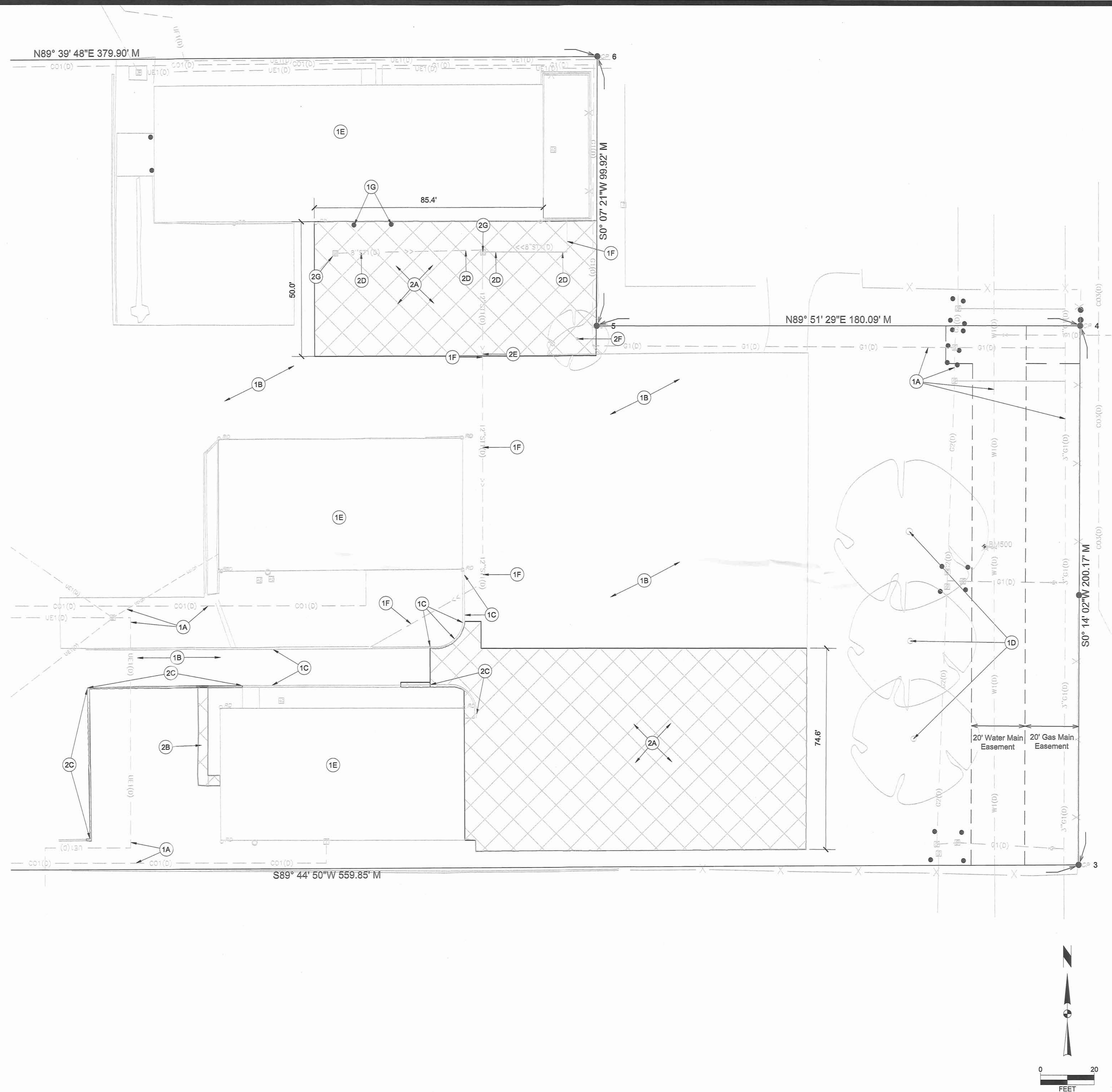
**SNYDER**  
& ASSOCIATES

Project No: 119.0404.01

Sheet C102

- A. CONTRACTOR TO FIELD VERIFY ALL UTILITY (STORM SEWER, SANITARY, ELECTRIC, GAS, ETC.) LOCATIONS, DEPTHS, AND CONDITION PRIOR TO CONSTRUCTION.
- B. SAW-CUT TO FULL DEPTH ALL PAVEMENTS TO BE REMOVED.

1. PROTECT THE FOLLOWING.
  - A. EXISTING UTILITIES.
  - B. EXISTING PAVEMENT.
  - C. EXISTING CURB AND GUTTER.
  - D. EXISTING TREE.
  - E. EXISTING BUILDING.
  - F. EXISTING STORM SEWER.
  - G. EXISTING PIPE BOLLARD
2. DEMOLISH THE FOLLOWING.
  - A. REMOVE AND DISPOSE EXISTING PAVEMENT.
  - B. REMOVE AND DISPOSE EXISTING SIDEWALK.
  - C. REMOVE AND DISPOSE EXISTING CURB.
  - D. REMOVE AND DISPOSE EXISTING 8" PVC.
  - E. REMOVE AND DISPOSE EXISTING 12" CMP.
  - F. REMOVE AND DISPOSE EXISTING TREE.
  - G. REMOVE AND DISPOSE EXISTING INTAKE.



A. UTILITY WARNING:  
THE UTILITIES SHOWN HAVE BEEN LOCATED FROM FIELD SURVEY INFORMATION AND/OR RECORDS OBTAINED  
THE SURVEYOR MAKES NO GUARANTEE THAT THE UTILITIES SHOWN COMPRISE ALL SUCH UTILITIES IN THE  
ARE, EITHER IN SERVICE OR ABANDONED. THE SURVEY FURTHER DOES NOT WARRANT THAT THE UTILITIES  
SHOWN ARE IN EXACT LOCATION INDICATED.

B. NOTIFY UTILITY OWNERS PRIOR TO BEGINNING ANY CONSTRUCTION. CONTRACTOR IS RESPONSIBLE FOR DETERMINING EXISTENCE, EXACT LOCATION AND DEPTH OF ALL UTILITIES. AVOID DAMAGE TO UTILITIES AND SERVICES DURING CONSTRUCTION. ANY DAMAGE DUE TO THE CONTRACTOR'S CARELESSNESS SHALL BE CORRECTED AT THE CONTRACTOR'S EXPENSE. COORDINATE AND COOPERATE WITH UTILITY COMPANIES DURING CONSTRUCTION.

C. THE CONTRACTOR SHALL PROTECT ALL EXISTING UTILITIES AND FEATURES WITH ARE TO REMAIN. DAMAGE TO EXISTING UTILITIES OR SITE IMPROVEMENTS SHALL BE REPAIRED BY THE CONTRACTOR TO THE OWNER'S SPECIFICATIONS AT THE CONTRACTORS EXPENSE.

D. THE SITE CONTRACTOR SHALL BE RESPONSIBLE FOR LAYOUT VERIFICATION OF ALL SITE IMPROVEMENTS PRIOR TO CONSTRUCTION. CONTRACTOR TO CONSTRUCT ALL SITE IMPROVEMENTS AND UTILITIES IN ACCORDANCE WITH THE URBAN STANDARD SPECIFICATIONS FOR PUBLIC IMPROVEMENTS.

E. THE CONTRACTOR SHALL BE RESPONSIBLE FOR INSTALLING AND MAINTAINING TRAFFIC CONTROL IN ACCORDANCE WITH THE MANUAL ON UNIFORM TRAFFIC CONTROL DEVICES 'MUTCD'. ALL PROPOSED SIGNS SHALL CONFORM TO THE 'MUTCD' MANUAL.

F. THE CONTRACTOR SHALL LOAD AND TRANSPORT ALL MATERIALS NOT DESIRABLE TO BE INCORPORATED INTO THE PROJECT TO AN APPROVED OFF-SITE WASTE SITE.

G. SAW-CUT AT TERMINATION TO FULL DEPTH ALL PAVEMENTS TO BE REMOVED.

1. PAVEMENTS, PROVIDE THE FOLLOWING:
  - A. PCC PAVEMENT, 6" DEPTH PCC DRIVES AND PARKING ON 12" DEPTH PREPARED SUBGRADE COMPACTED TO 95% STANDARD PROCTOR DENSITY.
  - B. PCC SIDEWALKS, 4" DEPTH PAVEMENT ON 6" DEPTH PREPARED SUBGRADE COMPACTED TO 95% STANDARD PROCTOR DENSITY.
  - C. 6" STANDARD CURB & GUTTER
  - D. TAPER TO NO CURB IN 8'
  - E. 6" INTEGRAL CURB WITH SIDEWALK

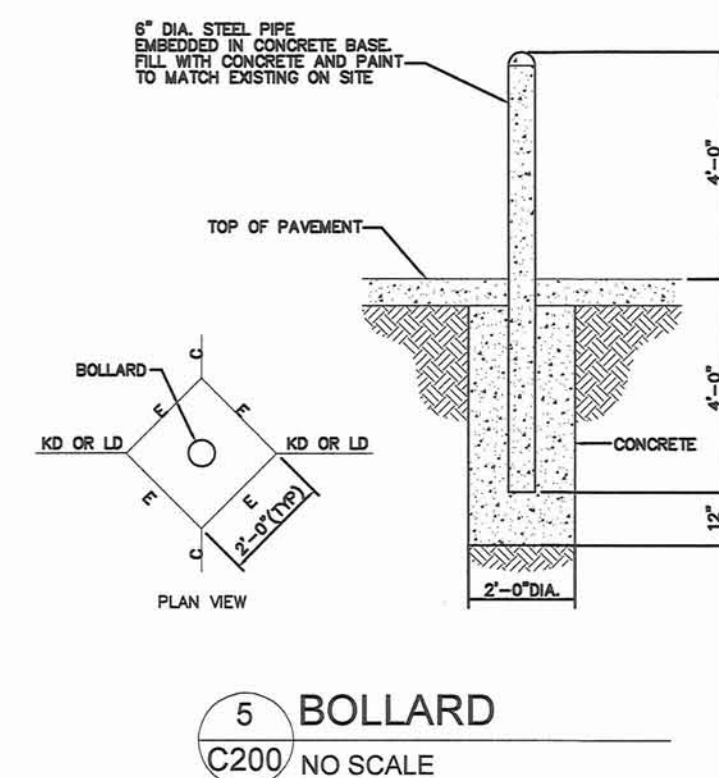
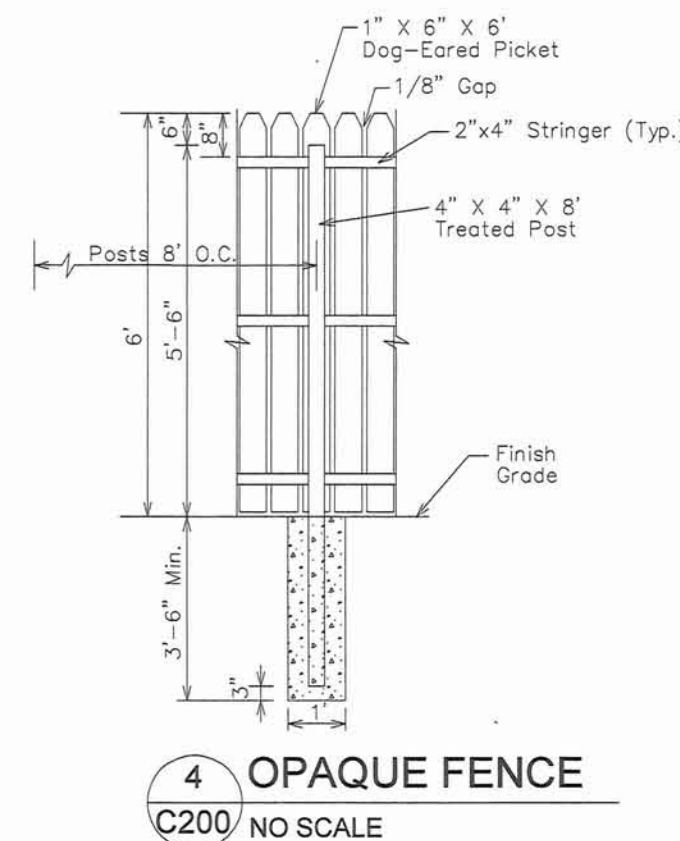
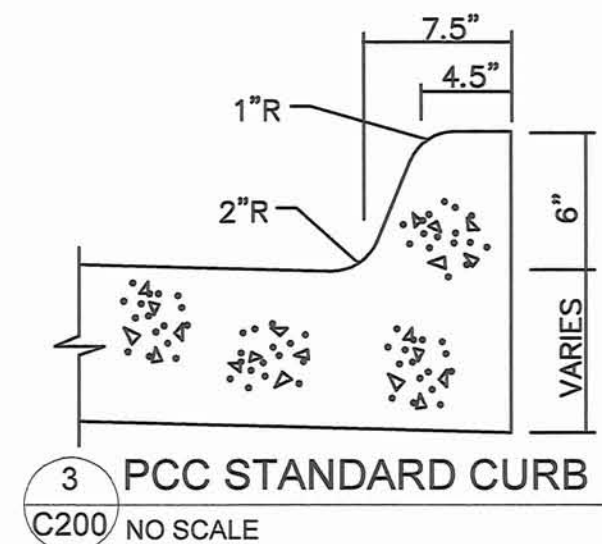
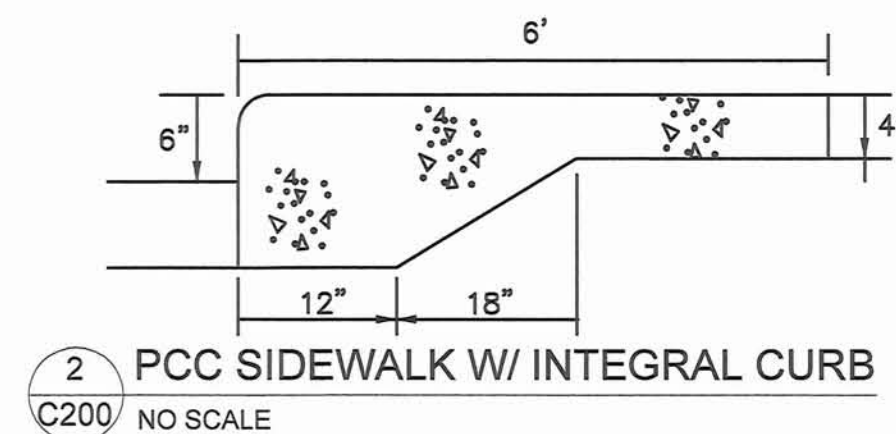
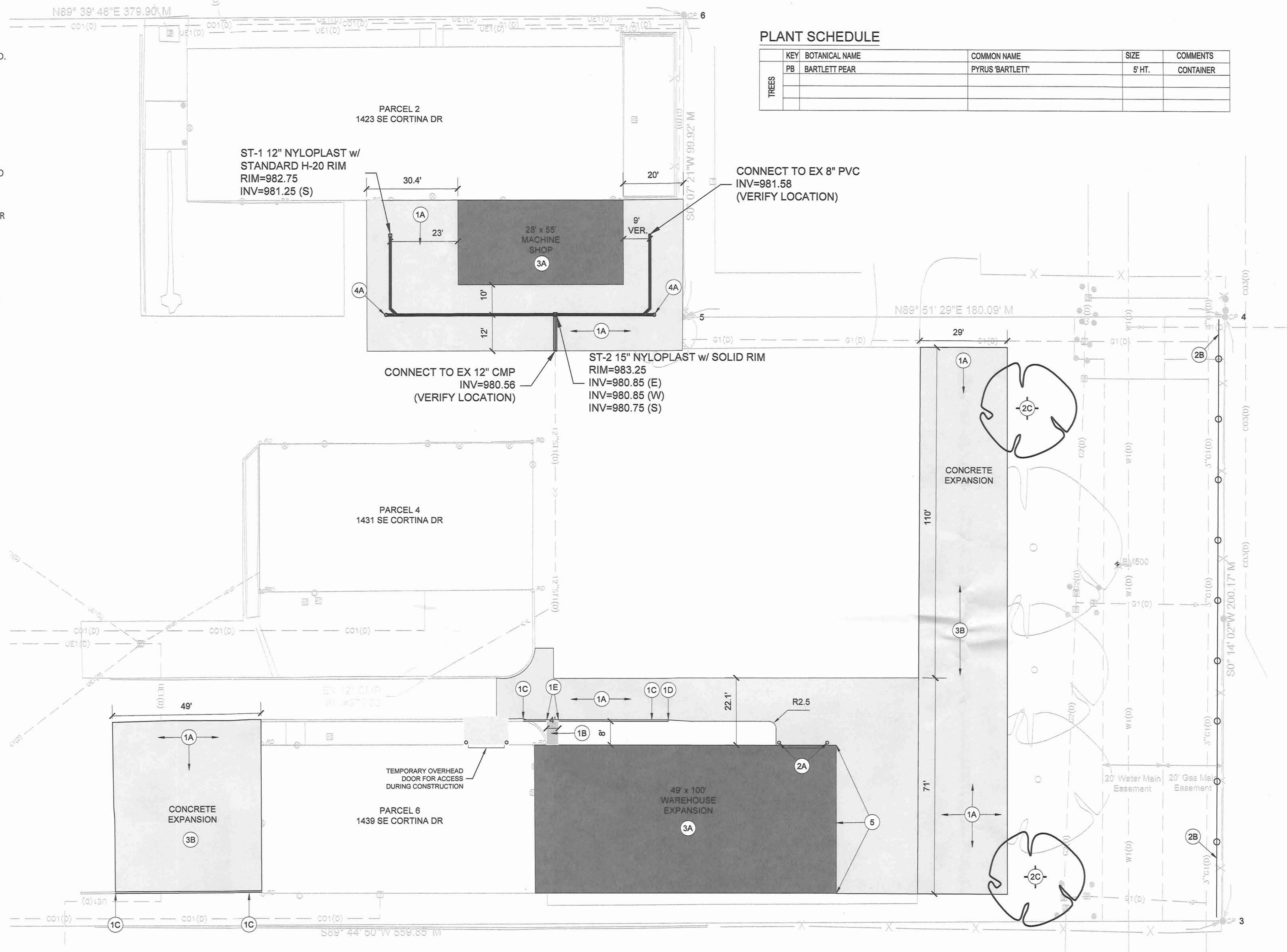
2. SITE AMENITIES, PROVIDE THE FOLLOWING:
  - A. PIPE BOLLARD. PAINTED AND FILLED WITH CONCRETE. PAINT COLOR TO BE DETERMINED BY OWNER.
  - B. 6' OPAQUE FENCE.
  - C. TREES. SEE PLANTING SCHEDULE.

3. PROPOSED IMPROVEMENTS
  - A. BUILDING EXPANSION, SEE ARCHITECTURAL PLANS FOR CONSTRUCTION DETAILS
  - B. PAVEMENT EXPANSION

4. STORM SEWER  
A. CLEANOUT, TYPE A-1

5. FOUNDATION WALL AT 981.00, SEE ARCHITECTURAL & STRUCTURAL DRAWINGS FOR CONSTRUCTION DETAILS.

$$\text{ERU} = 71,874 \text{ SF} / 4000 \text{ SF} = 17.97$$

$$\text{ERU} = 18 < 40$$


TREES	KEY	BOTANICAL NAME	COMMON NAME	SIZE	COMMENTS
	PB	BARTLETT PEAR	PYRUS 'BARTLETT'	5' HT.	CONTAINER

[illegible]

**THE DUPPS COMPANY - BUILDING EXPANSIONS**

**DIMENSION, UTILITY, & PLANTING PLAN**

**SNYDER & ASSOCIATES, INC. |**

**ANKENY, IOWA**

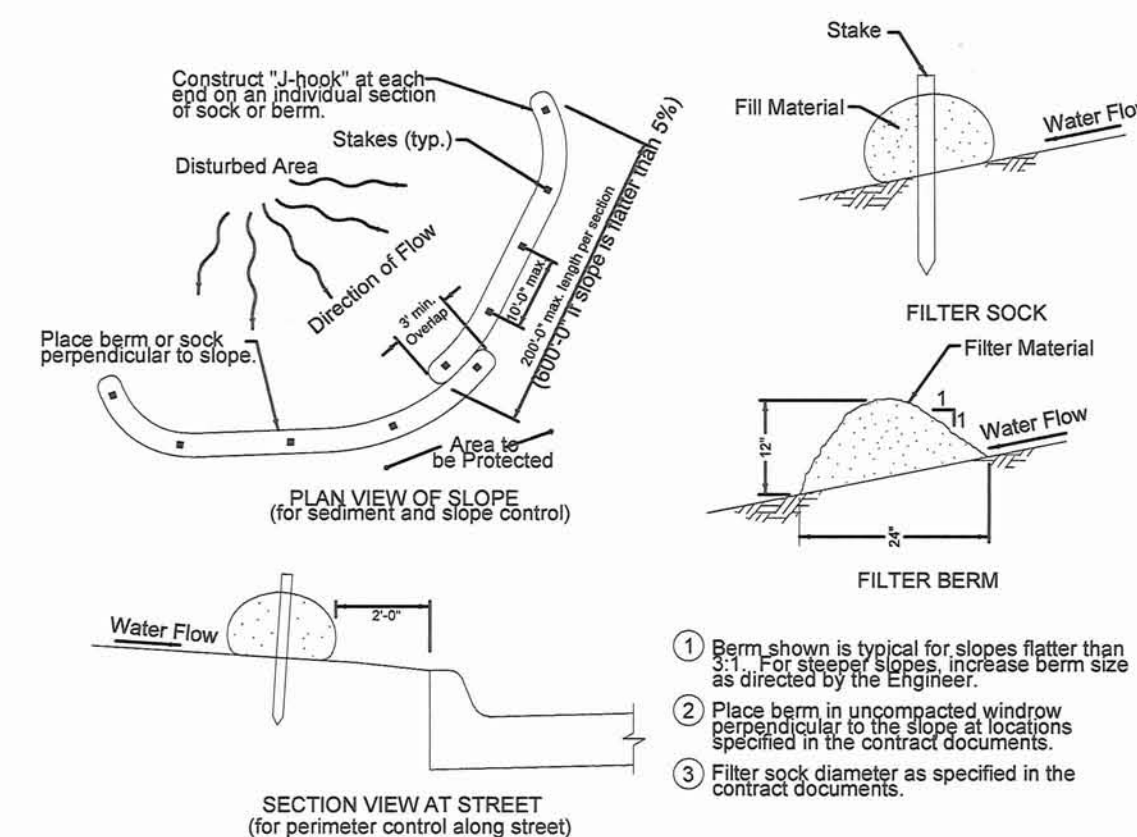
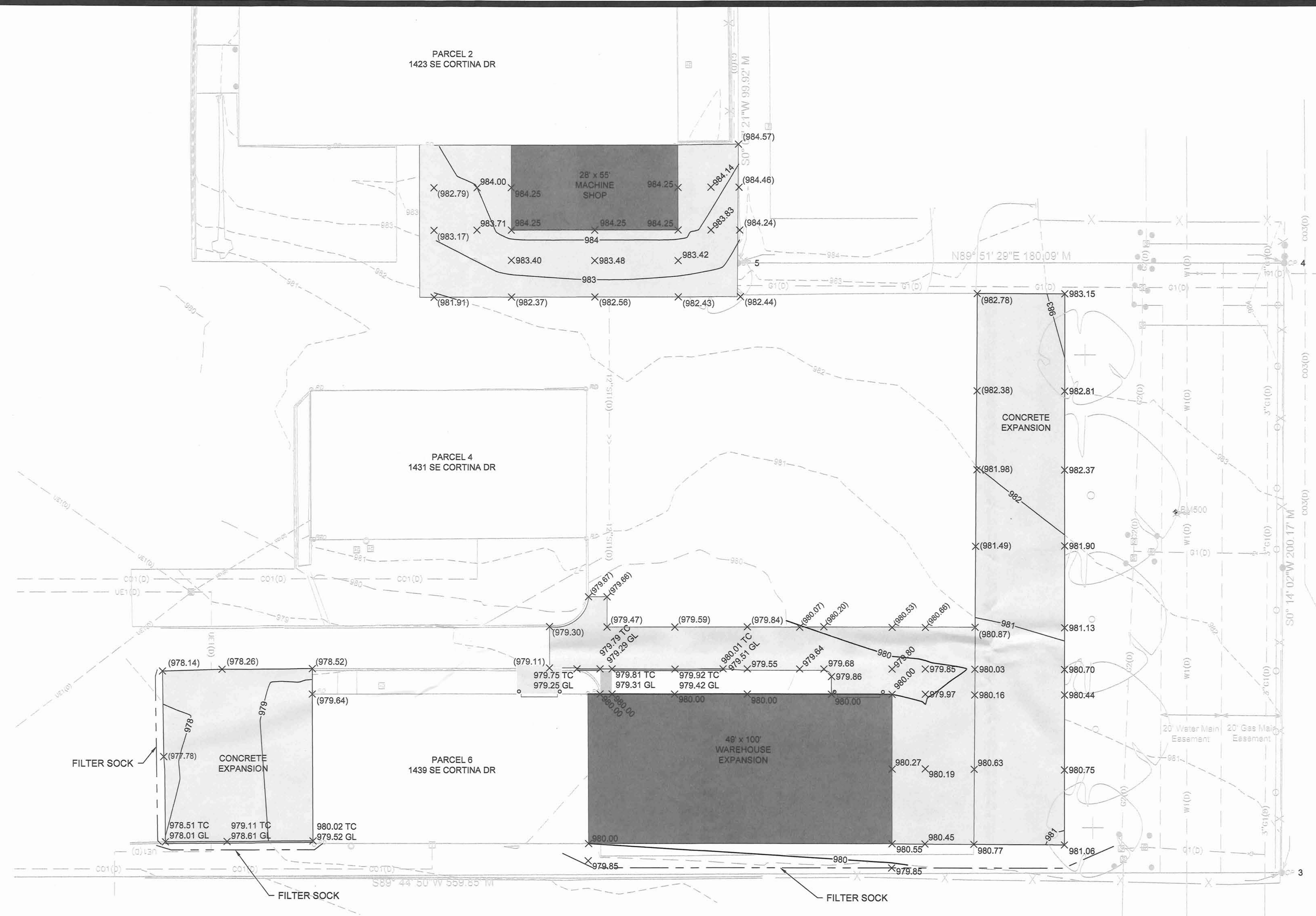
2727 S.W. SNYDER BLVD  
ANKENY, IOWA 50023  
515-984-2020 | [www.snyder-associates.com](http://www.snyder-associates.com)



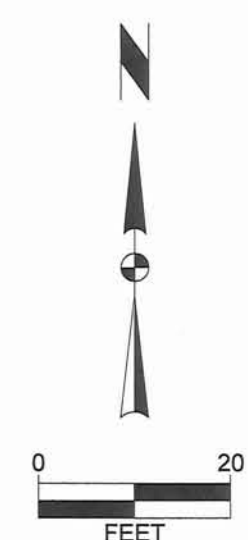
Project No: 119.0404.01  
Sheet C200

# GRADING NOTES

- A. CONTRACTOR TO STRIP AND STOCKPILE TOPSOIL ON ALL AREAS TO BE CUT OR FILLED. RESPREAD TO MINIMUM 6" DEPTH TO FINISH GRADES.
- B. PROVIDE EROSION CONTROL AS NECESSARY
- C. FOUNDATION WALL AT 981.00, SEE ARCHITECTURAL & STRUCTURAL DRAWINGS FOR CONSTRUCTION DETAILS.
- D. SEED ALL AREAS DISTURBED BY CONSTRUCTION.



1 FILTER SOCK DETAIL  
C300 NO SCALE



## THE DUPPS COMPANY - BUILDING EXPANSIONS

### GRADING & EROSION CONTROL PLAN

ANKENY, IOWA

**SNYDER & ASSOCIATES, INC.**

2727 S.W. SNYDER BLVD  
ANKENY, IOWA 50023  
515-584-2020 | www.snyder-associates.com



Project No: 119.0404.01  
Sheet C300

MARK	ENGINEER	REVISION	DATE	BY
	EJN	Checked By: EPM	1" = 20'	
	LJM	Date: 07-26-2019	T-R-S: T80N-R23W-S24	
Project No: 119.0404.01				Sheet C300