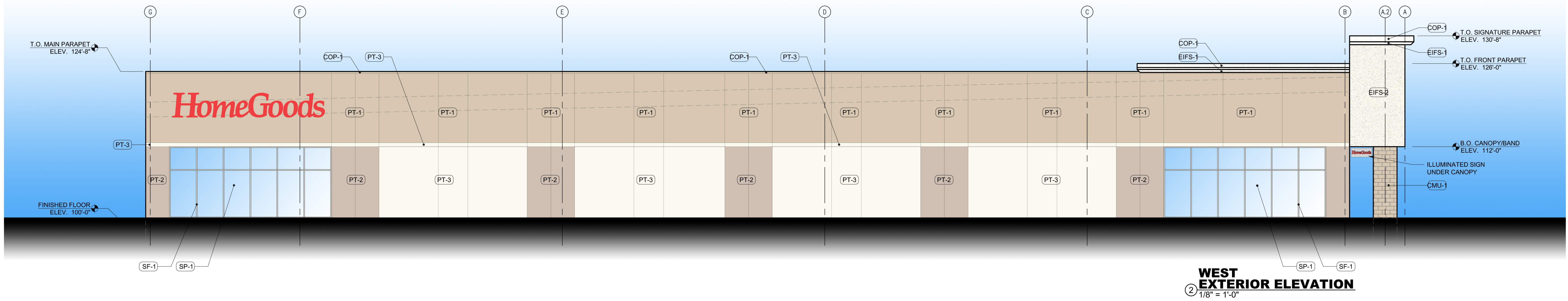
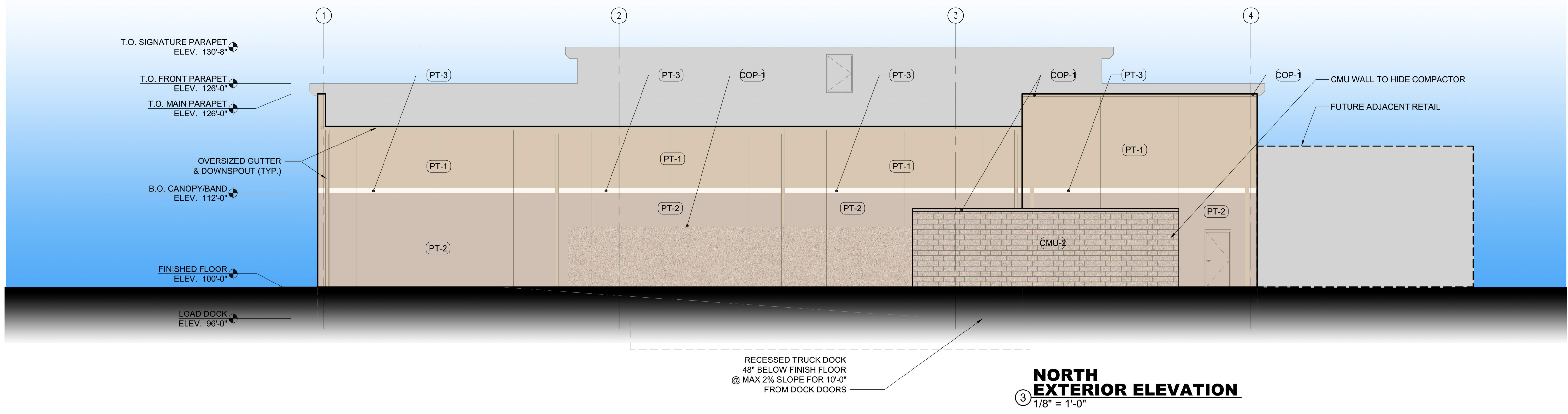




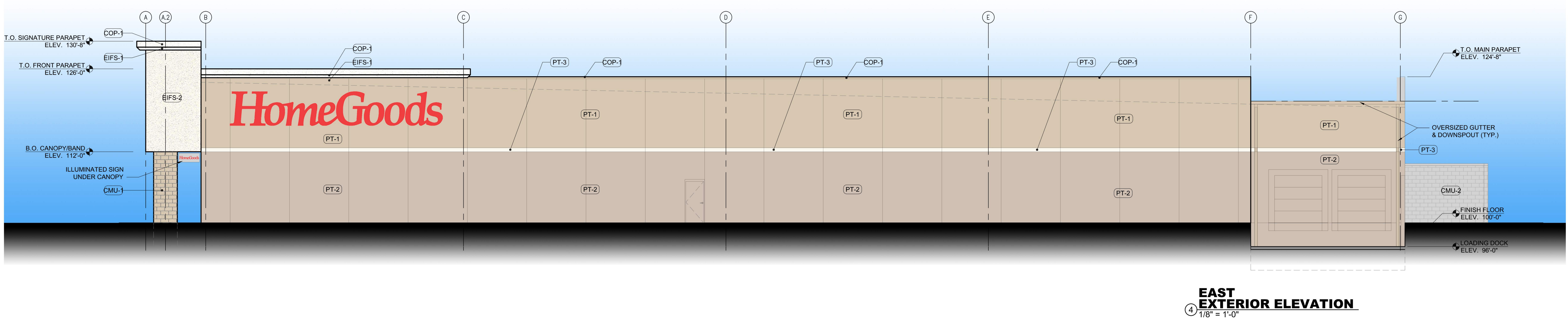
**SOUTH (FRONT)
EXTERIOR ELEVATION**
1
1/8" = 1'-0"



**WEST
EXTERIOR ELEVATION**
2
1/8" = 1'-0"



**NORTH
EXTERIOR ELEVATION**
3
1/8" = 1'-0"



**EAST
EXTERIOR ELEVATION**
4
1/8" = 1'-0"

- GENERAL EXT. ELEVATION NOTES**
1. REFER TO ADDITIONAL NOTES AND REQUIREMENTS ON ALL OTHER DOCUMENTS AND OTHER DISCIPLINES DOCUMENTS.
 2. ALL HORIZONTAL TRANSITIONS BETWEEN DIFFERENT MATERIALS SHALL BE FLASHED CONTINUOUS FROM UP BEHIND TO UNDER UPPER MATERIAL AND EXTEND OVER TO EXTERIOR FACE OF LOWER MATERIAL.
 3. ANY RETURNS OR BLIND ELEVATIONS NOT SHOWN SHALL BE SIMILAR IN MATERIAL AND MAKEUP TO ADJACENT CONDITIONS OR OTHER SIMILAR CONDITIONS.
 4. INSTALL VERTICAL EXPANSION JOINT MINIMAL AT COLUMN/GRID LINES AND AT THE HEAD OF DOOR JAMBS/OPENINGS OR AS OTHERWISE NOTED OR WHERE REQUIRED PER STANDARD MATERIAL PRACTICES TO REDUCE STRESS CRACKING. NO CONTROL JOINT/EXPANSION JOINT AT MAIN STRUCTURAL BEARING. KEEP AWAY 2'-0" MIN.
 5. CAULK & SEAL ALL TRANSITION-CONTROL-EXPANSION AT ALL EXTERIOR MATERIALS.
 6. INSULATE AND SEAL TO ENSURE ADEQUATE AIR INFILTRATION BARRIER AROUND ALL EXTERIOR PENETRATIONS TO PREVENT WATER AND SPRINKLER PIPE FREEZING.
 7. ADDRESS SHALL BE PROVIDED ON STREET SIDE OF BUILDING AND ON MONUMENT SIGN. NUMBERS A MINIMUM 5 INCH CONTRASTING COLOR NUMBERS WITH MINIMUM 1/2" STROKE.
 8. IF ANY SIGNAGE OR SIGN BASE IS SHOWN IT IS FOR REFERENCE ONLY. FINAL DESIGNS AND/OR ALLOWANCES SHALL BE DETERMINED WITH APPROVED SIGNAGE PERMIT(S).

EXTERIOR MATERIAL LEGEND

MAT. LABEL	MATERIAL DESCRIPTION MATERIAL SPECIFICATION INFORMATION
COP-1	METAL COPING. COLOR TO MATCH ADJACENT MATERIAL U.O.N.
CMU-1	8"x8"x16" CONCRETE MASONRY UNIT PAINT TO MATCH DRYVIT #113 AMARILLO WHITE
CMU-2	8"x8"x16" CONCRETE MASONRY UNIT PAINT TO MATCH DRYVIT #111 PRAIRIE CLAY
PT-1	PRECAST PANEL WITH REVEALS PAINT TO MATCH DRYVIT #113 AMARILLO WHITE
PT-2	PRECAST PANEL WITH REVEALS PAINT TO MATCH DRYVIT #111 PRAIRIE CLAY
PT-3	PRECAST PANEL WITH REVEALS PAINT COLOR TBD
EIFS-1	EXTERIOR INSULATION FINISH SYSTEM (CORNICE): SMOOTH, BUFF COLOR TO MATCH DRYVIT #310 CHINA WHITE
EIFS-2	EXTERIOR INSULATION FINISH SYSTEM: SMOOTH, BUFF COLOR TO MATCH DRYVIT #102 BRIGHT WHITE
SF-1	KAWNEER TRIFAB VQ 451T ALUMINUM STOREFRONT FRAMING COLOR BONE WHITE, STANDARD PERMANFLUOR
SP-1	SPANDREL GLASS: COLOR WHITE
VIS-1	1" INSULATED VISION GLASS: CLEAR W/ LOW E COATING

- H: METAL MAN DOORS & FRAMES: PAINTED SEMI-GLOSS TO MATCH ADJACENT MATERIAL
- OVERHEAD PANEL DOORS: COLOR TBD
- GUTTERS & DOWNSPOUTS: METAL PREFINISHED TO MATCH ADJACENT MATERIAL
- FASCIA & SOFFIT: METAL PREFINISHED TO MATCH ADJACENT MATERIAL
- LIGHT FIXTURES: PRE-FINISHED COLOR TBD
- BOLLARDS: CONCRETE FILLED STEEL BOLLARDS PAINTED SAFETY YELLOW.