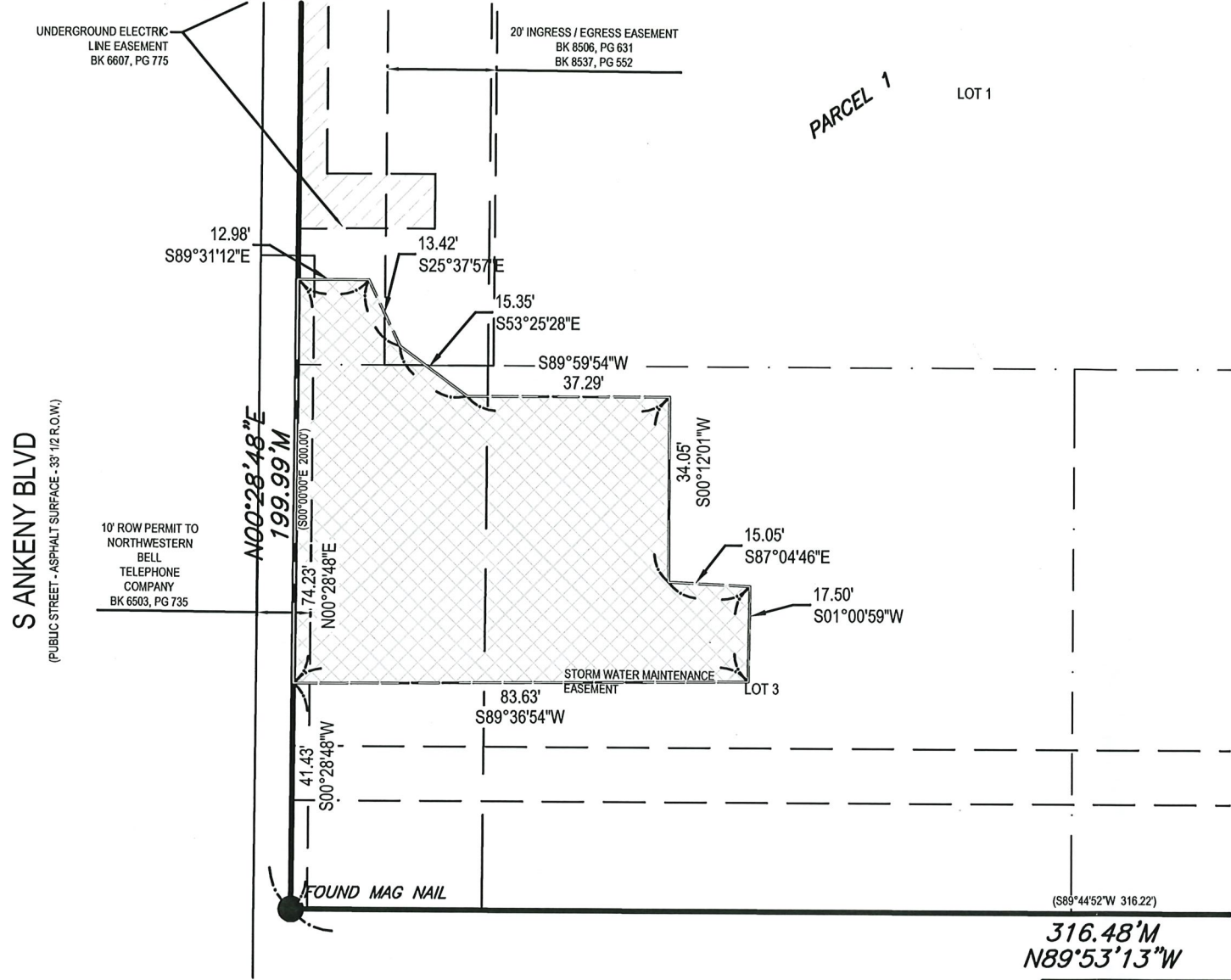


# STORMWATER MAINTENANCE

## EASEMENT EXHIBIT



### EASEMENT DESCRIPTION:

An irregular shaped easement over, under, and across Lots 1 and 3 in V.W. Smith Addition Plat 2, an Official Plat, Ankeny, Polk County, Iowa is described as follows: Commencing at the southwest corner of said Lot 3; thence N00°28'48"E assumed bearing along the west line of said Lot 3, a distance of 41.43 feet to the point of beginning; thence continuing N00°28'48"E along the west line of said Lots 3 and 1, a distance of 74.23 feet; thence S89°31'12"E, a distance of 12.98 feet; thence S25°37'57"E, a distance of 13.42 feet; thence S53°25'28"E, a distance of 15.35 feet; thence N89°59'54"E, a distance of 37.29 feet; thence S00°12'01"W, a distance of 34.05 feet; thence S87°04'46"E, a distance of 15.05 feet; thence S01°00'59"W, a distance of 17.50 feet; thence S89°36'54"W, a distance of 83.63 feet to the point of beginning.

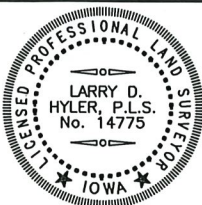
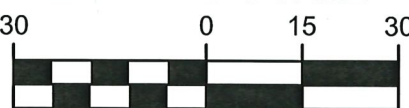
### OWNER/PREPARED FOR:

DAVE HAIL  
MISTER CAR WASH  
222 E. 5TH STREET  
TUCSON, AZ 85705

### LEGEND:

- PROPERTY CORNER
- ⊕ SECTION CORNER
- M MEASURED DISTANCE
- P PLATTED DISTANCE
- D DEEDED DISTANCE
- PRA PREVIOUSLY RECORDED AS
- ROW RIGHT OF WAY
- POC POINT OF COMMENCEMENT
- POB POINT OF BEGINNING

### GRAPHIC SCALE



I HEREBY CERTIFY THAT THIS LAND SURVEYING DOCUMENT WAS PREPARED AND THE RELATED SURVEY WORK WAS PERFORMED BY ME OR UNDER MY DIRECT PERSONAL SUPERVISION AND THAT I AM A DULY LICENSED PROFESSIONAL LAND SURVEYOR UNDER THE LAWS OF THE STATE OF IOWA.

SIGNED: Larry D. Hyler DATE: 7-30-2019  
LARRY D. HYLER, P.L.S. 14775

LICENSE RENEWAL DATE: DEC. 31, 2020 SHEET 1 OF 1  
PAGES OR SHEETS COVERED BY THIS SEAL:

**Bishop Engineering**  
"Planning Your Successful Development"



3501 104th Street  
Des Moines, Iowa 50322-3825  
Phone: (515)276-0467 Fax: (515)276-0217  
Civil Engineering & Land Surveying  
Established 1959

MISTER CAR WASH  
ANKENY, IA

### EASEMENT EXHIBIT

REFERENCE NUMBER:

DRAWN BY:  
DS

PROJECT NUMBER:  
190297