

SITE PLANS
FOR
**ANKENY PARKS MAINTENANCE FACILITY
IMPROVEMENTS**

210 NW ASH DRIVE
CITY OF ANKENY, POLK COUNTY, IOWA



VICINITY MAP



OWNER / DEVELOPER
CITY OF ANKENY
PARKS AND RECREATION DEPARTMENT
220 W FIRST STREET
ANKENY, IOWA 50023
CONTACT: NICK LENOX
PHONE: (515) 963-3570

INDEX OF SHEETS	
Sheet Number	Sheet Title
C100	Title Sheet
C101	Project Information
C200	Demolition Plan
C201	Dimension, Utility, & Planting Plan
C300	Grading, Storm Sewer, & Erosion Control Plan

RECEIVED
JAN 30 2020
CITY OF ANKENY

	I hereby certify that this engineering document was prepared by me or under my direct personal supervision and that I am a duly licensed Professional Engineer under the laws of the State of Iowa.	
	Erik J. Nikkel, P.E.	Date
	License Number P18678	
	My License Renewal Date is December 31, 2021	
	Pages or sheets covered by this seal:	



Project No: 119.0958.01
Sheet C100

ANKENY PARKS MAINTENANCE FACILITY IMPROVEMENTS

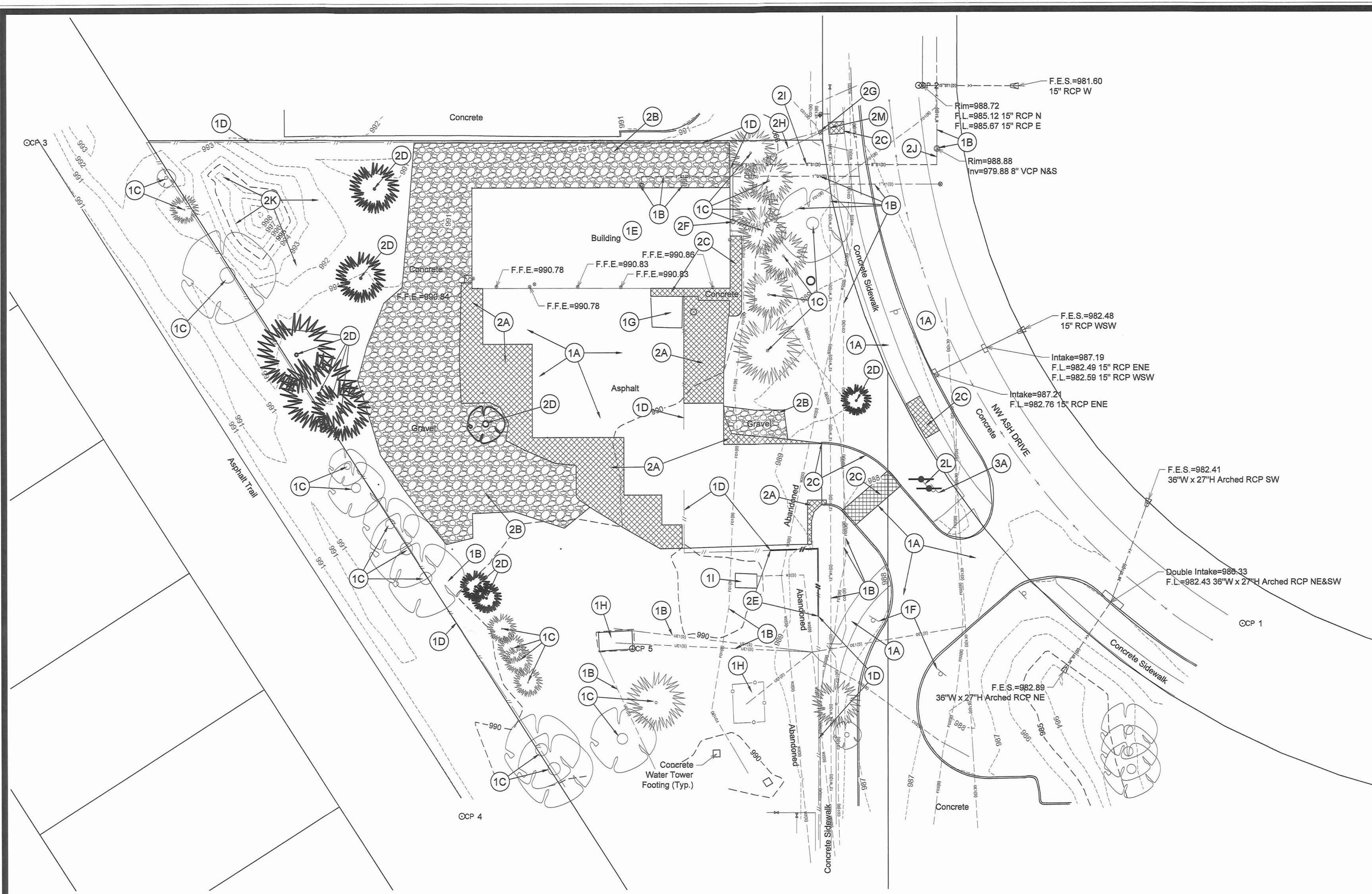
TITLE SHEET

ANKENY, IOWA

SNYDER & ASSOCIATES, INC.

2727 S.W. SNYDER BLVD
ANKENY, IOWA 50023
515-964-2020 | www.snyder-associates.com

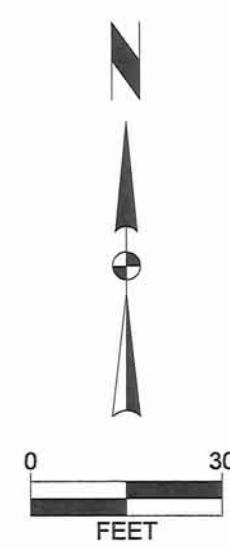
MARK	REVISION	DATE	BY
1	REVISED PER CITY COMMENTS	01/06/20	LFG
Engineer: ZTA	Checked By: CRS	Date: 01/30/2020	Scale: 1" = 500'
Technician: ZTA			T-R-S: T60N-R24W-S14
Project No: 119.0958.01			Sheet C100



- [Cross-hatched pattern] = EXISTING PAVEMENT DEMOLITION AREA
- [Stippled pattern] = EXISTING GRAVEL DEMOLITION AREA

DEMOLITION PLAN CONSTRUCTION NOTES

1. EXISTING FEATURES, PROTECT THE FOLLOWING:
- A. PAVEMENTS TO REMAIN.
 - B. EXISTING UTILITIES. COORDINATE ANY RELOCATIONS OR ADJUSTMENTS WITH UTILITY SERVICE PROVIDER AS NECESSARY.
 - C. EXISTING VEGETATION TO REMAIN.
 - D. EXISTING FENCE TO REMAIN.
 - E. EXISTING BUILDING TO REMAIN.
 - F. EXISTING SIGN TO REMAIN
 - G. EXISTING BENCHES TO REMAIN.
 - H. EXISTING CELL TOWER ELECTRICAL COMPONENTS AND PCC PAD TO REMAIN.
 - I. EXISTING CONCRETE VAULT FOR WELL.
2. DEMOLITION, REMOVE THE FOLLOWING:
- A. EXISTING ASPHALT PAVEMENT. SAWCUT FULL DEPTH AT REMOVAL LIMITS.
 - B. EXISTING GRAVEL PAVEMENT SAWCUT FULL DEPTH. REMOVE AND DISPOSE.
 - C. EXISTING CONCRETE PAVEMENT TO FULL DEPTH. SAW CUT AT NEAREST JOINT.
 - D. EXISTING TREE. REMOVE TREE STUMP TO MINIMUM 24" DEPTH.
 - E. EXISTING FENCE POST AND ASSOCIATED FOOTINGS. CONTRACTOR TO ROLL FENCE FABRIC TO BE REINSTALLED UPON COMPLETION OF CONSTRUCTION ACTIVITIES.
 - F. EXISTING SANITARY CLEANOUT.
 - G. EXISTING CURB STOP.
 - H. ABANDON EXISTING WATER SERVICE. COORDINATE WITH CITY WATER DEPARTMENT.
 - I. ABANDON EXISTING SANITARY SERVICE.
 - J. PLUG EXISTING SANITARY SEWER SERVICE STUB WITH FLOWABLE MORTAR.
 - K. EXISTING STOCKPILE. SEE GRADING PLAN FOR PROPOSED ELEVATIONS.
 - L. EXISTING PARK MAINTENANCE BUILDING SIGN AND ASSOCIATED FOOTINGS.
 - M. EXISTING "T" CONNECTION TO WATER MAIN.
3. SALVAGE THE FOLLOWING:
- A. EXISTING CITY OF ANKENY SUNNY VIEW CARE CENTER SIGN.



ANKENY PARKS MAINTENANCE FACILITY IMPROVEMENTS

DEMOLITION PLAN

ANKENY, IOWA

SNYDER & ASSOCIATES, INC. |

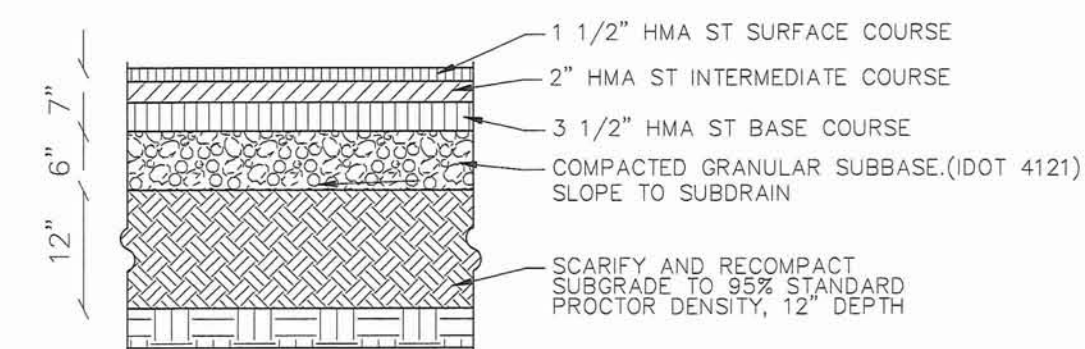
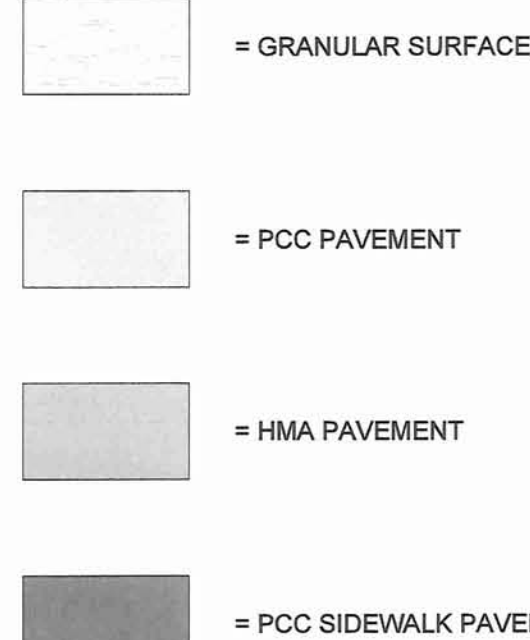
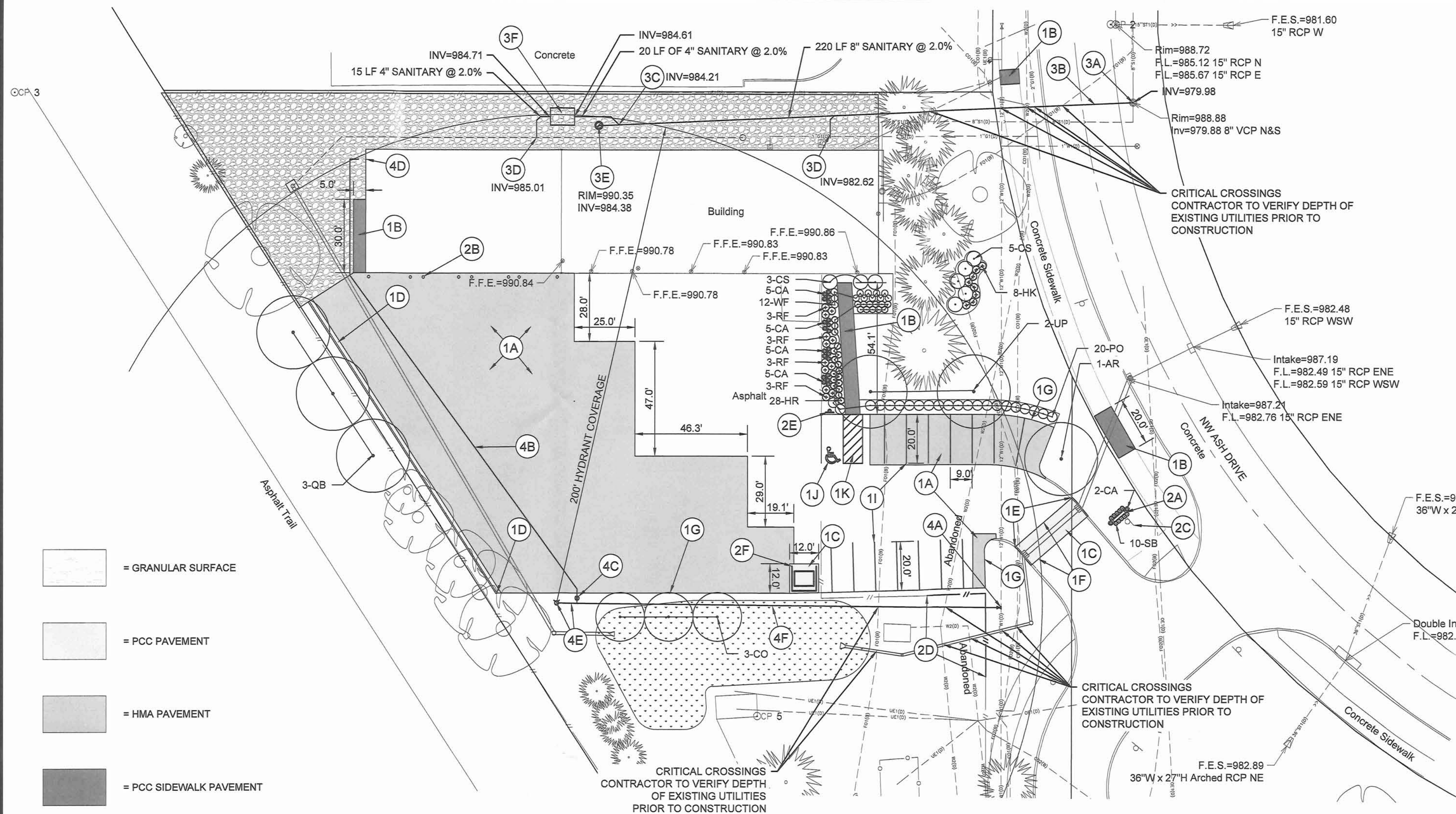


Project No: 119.0958.01

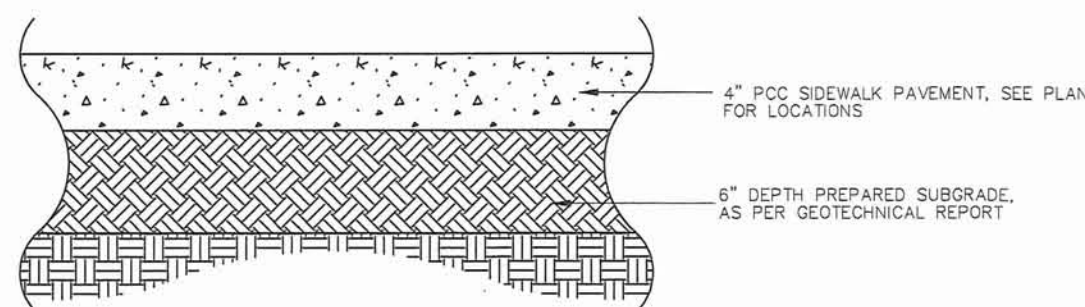
Sheet C200

2727 S.W. SNYDER BLVD
ANKENY, IOWA 50023
515-984-2020 | www.snyder-associates.com

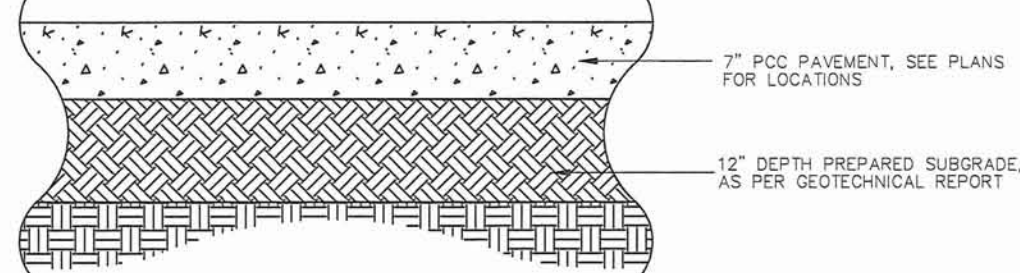
REVISION	DATE	BY
1	01/06/20	LFG
MARK	DATE	BY
Engineer: ZTA	Checked By: CRS	Scale: 1" = 30'
Technician: ZTA	Date: 01/30/2020	F-R-S: T80N-R24W-S14
Project No: 119.0958.01		
Sheet C200		



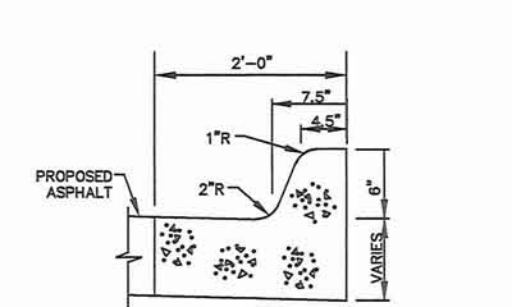
1 HMA PAVEMENT SECTION
NO SCALE



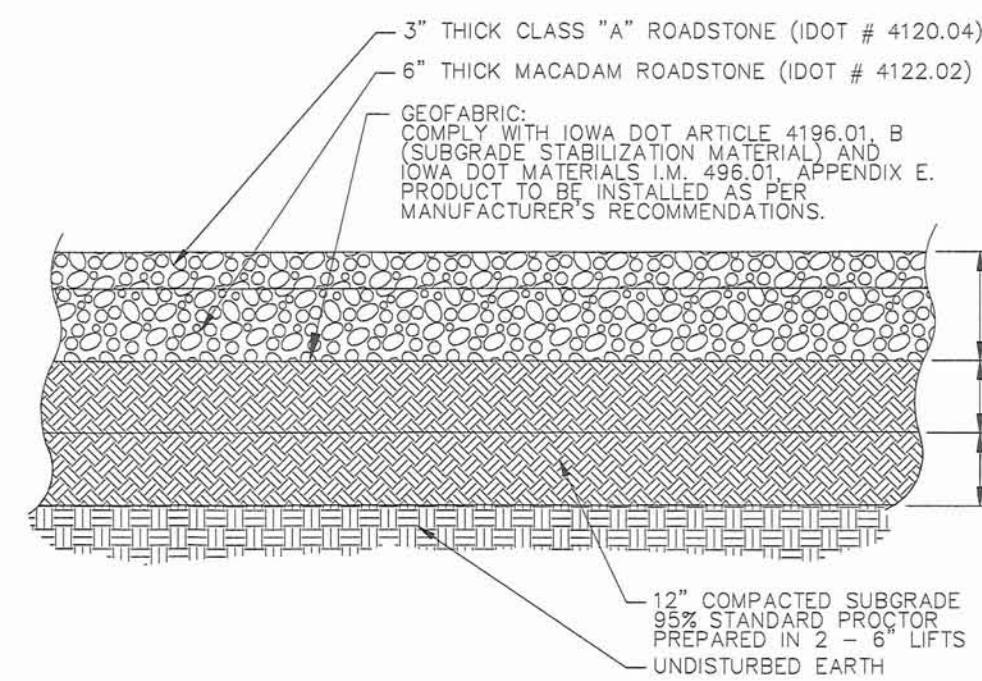
2 PCC PAVEMENT SECTIONS
NO SCALE



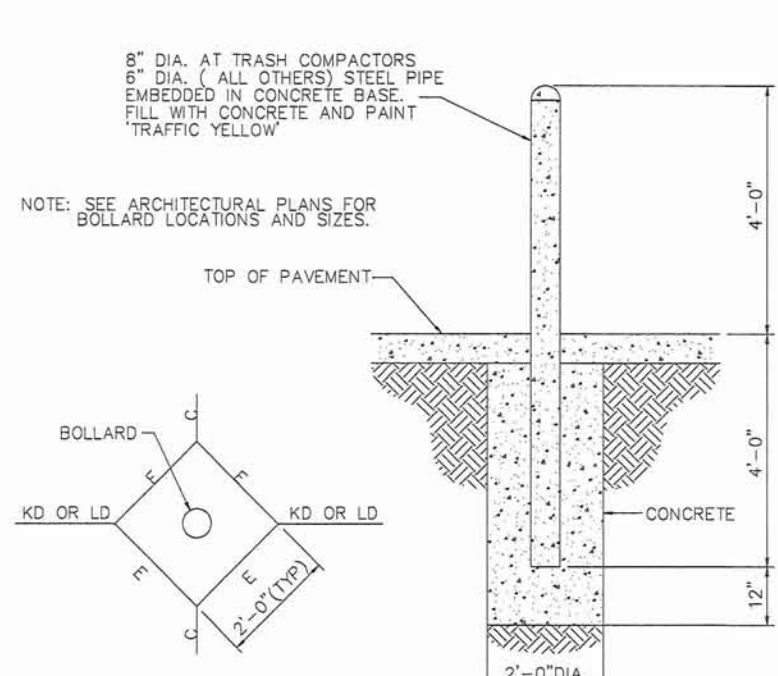
3 PCC STANDARD CURB SECTION
NO SCALE



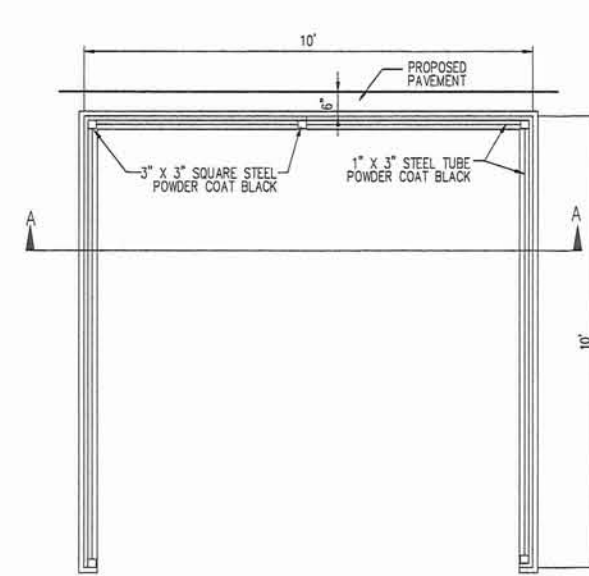
4 PCC CURB & GUTTER SECTION
NO SCALE



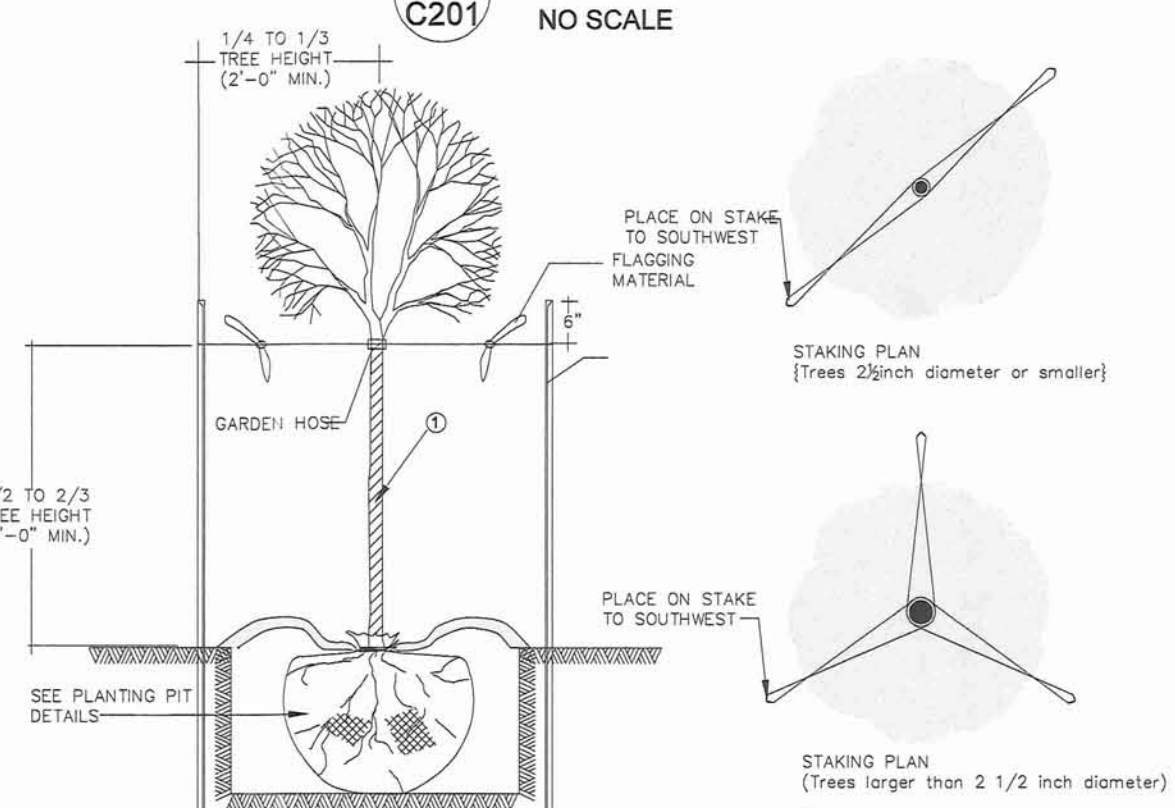
5 GRANULAR SURFACING SECTION
NO SCALE



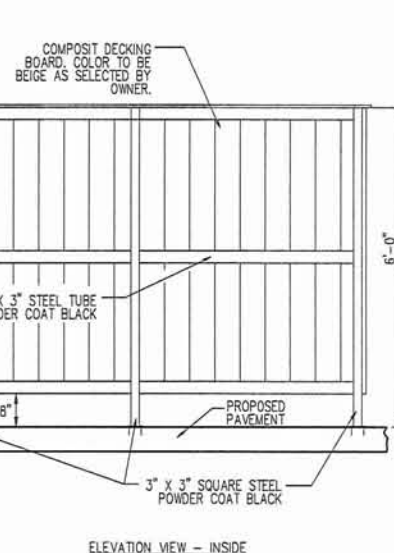
6 TYPICAL BOLLARD DETAIL
NO SCALE



7 TRASH ENCLOSURE DETAIL
NO SCALE



8 DECIDUOUS TREE STAKING DETAIL
NO SCALE



9 PLANTING PIT DETAILS
NO SCALE

DIMENSION AND UTILITY PLAN CONSTRUCTION NOTES

- PAVEMENTS AND PAVEMENT MARKINGS, PROVIDE THE FOLLOWING:
 - HMA DRIVES AND PARKING, 7" DEPTH PAVEMENT ON 6" DEPTH COMPACTED GRANULAR BASE. SEE DETAIL.
 - PCC SIDEWALKS, 4" DEPTH PAVEMENT ON 6" PREPARED SUBGRADE. SEE DETAIL.
 - PCC DRIVES, 7" DEPTH PAVEMENT ON 12" PREPARED SUBGRADE. SEE DETAIL.
 - PCC 6" CURB AND GUTTER. SEE DETAIL.
 - PCC 8" STANDARD CURB. SEE DETAIL.
 - CONNECT TO EXISTING PAVEMENT, DRILL AND DOWEL. MATCH EXISTING ELEVATIONS.
 - NO CURB.
 - GRANULAR SURFACING, 9" DEPTH. SEE DETAIL.
 - 4" WIDE PAINTED PARKING STALL LINES. COLOR: WHITE.
 - PAINTED STATE OF IOWA APPROVED ACCESSIBLE PARKING SYMBOL.
 - ACCESSIBLE AISLE. 45" STRIPING AT 3' ON CENTER SPACING WHERE SHOWN; COLOR: WHITE.
- SITE AMENITIES, PROVIDE THE FOLLOWING:
 - PARK SIGN, BY OWNER. LOCATION OF GROUND SIGN AND ALL OTHER SIGNS WILL NEED TO BE APPROVED THROUGH THE SIGN PERMIT APPLICATION PROCESS.
 - PROVIDE BOLLARD. SEE DETAIL.
 - RELOCATED CITY OF ANKENY SUNNY VIEW CARE CENTER SIGN.
 - REINSTALL BLACK VINYL FENCE FABRIC. CONTRACTOR TO PROVIDE AND INSTALL NEW FENCE POSTS AND ASSOCIATED FOOTINGS.
 - PROVIDE ACCESSIBLE PARKING SIGN IN PLANT BED.
 - PROVIDE 10'x10' TRASH ENCLOSURE. ENCLOSURE TO BE STEEL FRAME WITH COMPOSITE DECKING MATERIAL. SEE DETAIL.
- SANITARY SEWER, PROVIDE THE FOLLOWING:
 - CONNECT TO EXISTING WATER MAIN WITH 12" X 6" TAPPING SLEEVE AND VALVE.
 - TRENCH 2" PRIVATE WATER SERVICE WITH FITTINGS, BENDS, AND THRUST BLOCKS AS NECESSARY. MINIMUM 5.5' BURY DEPTH AND MIN. 18" CLEARANCE WITH OTHER UTILITIES. CONTRACTOR TO VERIFY LOCATION AND ELEVATION WITH MECHANICAL PLANS PRIOR TO CONSTRUCTION.
 - CURB STOP. CURB STOP TO BE ENCASED IN CONCRETE.
 - CONNECT TO BUILDING WATER SERVICE STUB OUT. REFER TO MECHANICAL PLANS FOR ADDITIONAL INFORMATION.
 - HYDRANT ASSEMBLY AND 6" DIP HYDRANT LEAD.
 - TRENCH 6" PRIVATE WATER SERVICE WITH FITTINGS, BENDS, AND THRUST BLOCKS AS NECESSARY. MINIMUM 5.5' BURY DEPTH AND MIN. 18" CLEARANCE WITH OTHER UTILITIES. CONTRACTOR TO VERIFY LOCATION AND ELEVATION WITH MECHANICAL PLANS PRIOR TO CONSTRUCTION.
- WATER, PROVIDE THE FOLLOWING:
 - CONNECT TO EXISTING WATER MAIN WITH 12" X 6" TAPPING SLEEVE AND VALVE.
 - TRENCH 2" PRIVATE WATER SERVICE WITH FITTINGS, BENDS, AND THRUST BLOCKS AS NECESSARY. MINIMUM 5.5' BURY DEPTH AND MIN. 18" CLEARANCE WITH OTHER UTILITIES. CONTRACTOR TO VERIFY LOCATION AND ELEVATION WITH MECHANICAL PLANS PRIOR TO CONSTRUCTION.
 - CURB STOP. CURB STOP TO BE ENCASED IN CONCRETE.
 - CONNECT TO BUILDING WATER SERVICE STUB OUT. REFER TO MECHANICAL PLANS FOR ADDITIONAL INFORMATION.
 - HYDRANT ASSEMBLY AND 6" DIP HYDRANT LEAD.
 - TRENCH 6" PRIVATE WATER SERVICE WITH FITTINGS, BENDS, AND THRUST BLOCKS AS NECESSARY. MINIMUM 5.5' BURY DEPTH AND MIN. 18" CLEARANCE WITH OTHER UTILITIES. CONTRACTOR TO VERIFY LOCATION AND ELEVATION WITH MECHANICAL PLANS PRIOR TO CONSTRUCTION.

PLANTING REQUIREMENTS

LANDSCAPE REQUIREMENTS AND CALCULATIONS:
(AS PER CITY OF ANKENY SITE PLAN OPEN SPACE AND LANDSCAPING REQUIREMENTS)

OPEN SPACE REQUIREMENTS:
106,776 SF X 20% = 21,355.20 SF
21,355.20 SF / 3,000 SF = 7.12 PLANT UNITS (PU)
7.12 PU'S X 2 = 14.24 TREES REQUIRED, REQUIREMENT MET WITH EXISTING TREES
7.12 PU'S X 6 = 42.72 SHRUB REQUIRED (44 PROVIDED)

PAVEMENT SHADING REQUIREMENTS:

21,507 SF OF PAVEMENT X 20% = 4,301 SF
4,301 / 706 SF = 6.09 OVERSTORY TREES REQUIRED (7 PROVIDED)
--- (4) PAVEMENT OVERSTORY TREES PROVIDED WITHIN 15' OF PAVED AREA ON ONE SIDE (COUNTED AT 50%) TOTAL COUNTED: 8
--- (1) PAVEMENT OVERSTORY TREES PROVIDED WITHIN 15' OF PAVED AREA ON 2 OR MORE SIDES (COUNTED AT 100%)
--- (2) EXISTING TREES PROVIDED WITHIN 15' OF PAVED AREA ON ONE SIDE (COUNTED AT 50%) TOTAL COUNTED: 4
--- 4,942 SF PAVEMENT SHADING PROVIDED

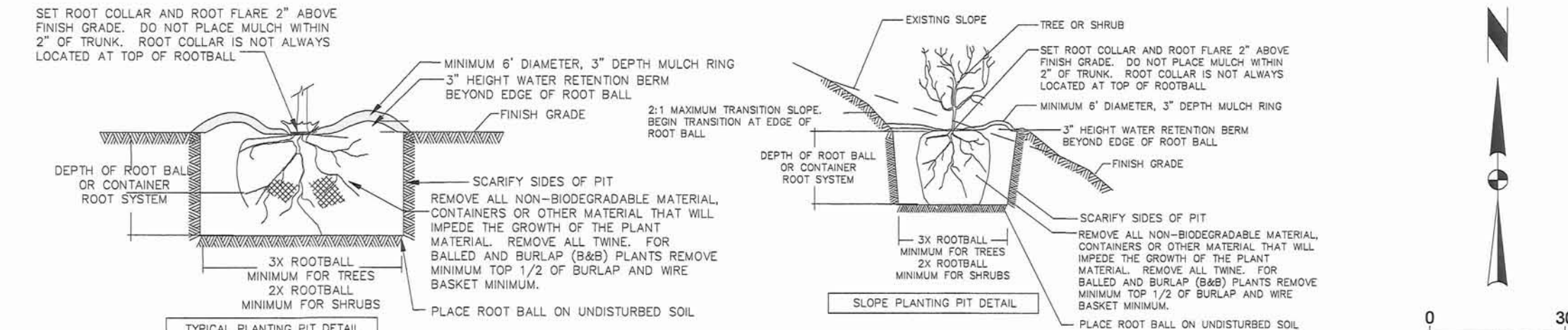
PLANTING PLAN GENERAL NOTES

- UTILITY WARNING:
THE UTILITIES SHOWN HAVE BEEN LOCATED FROM FIELD SURVEY INFORMATION AND/OR RECORDS OBTAINED. THE SURVEYOR MAKES NO GUARANTEE THAT THE UTILITIES SHOWN COMPRISE ALL SUCH UTILITIES IN THE AREA, EITHER IN SERVICE OR ABANDONED. THE SURVEY FURTHER DOES NOT WARRANT THAT THE UTILITIES SHOWN ARE IN THE EXACT LOCATION INDICATED.
- NOTIFY UTILITY OWNERS PRIOR TO BEGINNING ANY CONSTRUCTION. CONTRACTOR IS RESPONSIBLE FOR DETERMINING EXISTENCE, EXACT LOCATION AND DEPTH OF ALL UTILITIES. AVOID DAMAGE TO UTILITIES AND SERVICES DURING CONSTRUCTION. ANY DAMAGE DUE TO THE CONTRACTOR'S CARELESSNESS SHALL BE CORRECTED AT THE CONTRACTOR'S EXPENSE. COORDINATE AND COOPERATE WITH UTILITY COMPANIES DURING CONSTRUCTION.
- ALL PLANT MATERIAL SHALL AT LEAST MEET MINIMUM REQUIREMENTS SHOWN IN THE "AMERICAN STANDARDS FOR NURSERY STOCK" (ANSI Z60.1-LATEST EDITION).
- CONTRACTOR SHALL GUARANTEE ALL PLANT MATERIAL FOR A PERIOD OF ONE YEAR FROM DATE OF INSTALLATION.
- PROVIDE 3-INCH DEPTH SHREDDED HARDWOOD MULCH IN PLANT BED AREAS AS INDICATED ON PLAN AND PROVIDE A MIN 3-FOOT PERIMETER RING AROUND ALL TREES. PROVIDE VERTICAL CUT NATURAL EDGE TO A DEPTH OF 4-INCHES.
- PROVIDE 2-INCH RIVER GRAVEL PLACED TO A DEPTH OF 4-INCHES WITH WEED BARRIER FABRIC UNDERLAYMENT IN PLANT BED AREAS SHOWN ON PLAN.
- SEED ALL AREAS DISTURBED BY CONSTRUCTION WITH TYPE 1 SUDAS PERMANENT LAWN SEED MIX, UNLESS NOTED OTHERWISE. CONTRACTOR TO APPLY BONDED FIBER MATRIX (BFM) AT 3,000LB/ACRE TO ALL SEEDED AREAS.
- SEED DETENTION BASIN WITH DETENTION BASIN SEED MIX, IN AREA SHOWN ON PLANS, AS PRODUCED BY PRAIRIE MOON NURSERY, 32115 PRAIRIE LANE, WINONA, MN 55987, PHONE: (866) 417-8158, WEBSITE: www.prairiemoon.com, OR APPROVED EQUAL.

PLANT SCHEDULE

KEY	BOTANICAL NAME	COMMON NAME	SIZE	COMMENTS
TREES	AR <i>Acer rubrum</i> 'October Glory'	OCTOBER GLORY RED MAPLE	1 1/2" CAL.	B&B
	CO <i>Celtis occidentalis</i> 'Prairie Pride'	PRAIRIE PRIDE HACKBERRY	1 1/2" CAL.	B&B
	QB <i>Quercus bicolor</i>	SWAMP WHITE OAK	1 1/2" CAL.	B&B
	UP <i>Ulmus x 'Patriot'</i>	PATRIOT ELM	1 1/2" CAL.	B&B
SHRUBS & PERENNIALS	CA <i>Calamagrostis x acutiflora</i> 'Karl Foerster'	KARL FOERSTER FEATHER REED GRASS	24" HT.	CONT. (2' O.C.)
	CS <i>Cornus sericea</i> 'Isanti'	ISANTI RED-TWIG DOGWOOD	36" HT.	CONT. (6' O.C.)
	HR <i>Hemerocallis</i> 'Rosy Returns'	ROSY RETURNS DAYLILY	12" HT.	CONT. (30" O.C.)
	HK <i>Hypericum kalmianum</i> 'Ames'	AMES ST. JOHN'S WORT	18" HT.	CONT. (3' O.C.)
	PO <i>Physocarpus opulifolius</i> 'Tiny Wine'	TINY WINE NINEBARK	18" HT.	CONT. (4' O.C.)
	RF <i>Rhamnus frangula</i> 'Ron Williams'	FINE LINE BUCKTHORN	36" HT.	CONT. (3' O.C.)
	SB <i>Spiraea x bumalda</i> 'Flowering Choice'	FLOWERING CHOICE SPIREA	12" HT.	CONT. (2' O.C.)
	WF <i>Weigela florida</i> 'Minuet'	MINUET WEIGELA	12" HT.	CONT. (30" O.C.)

NOTE: QUANTITIES SHOWN ARE APPROXIMATE. CONTRACTOR TO VERIFY PLANT MATERIAL PRIOR TO BIDDING. IN THE CASE OF A DISCREPANCY, THE PLAN QUANTITY SHALL GOVERN.



REVISED PER CITY COMMENTS	DATE	BY
1	01/06/20	LFG
MARK	REVISION	DATE
Engineer: ZTA	Checked By: CRS	Scale: 1" = 30'
Technician: ZTA	Date: 01/30/2020	T-R-S: T80N-R24W-S14

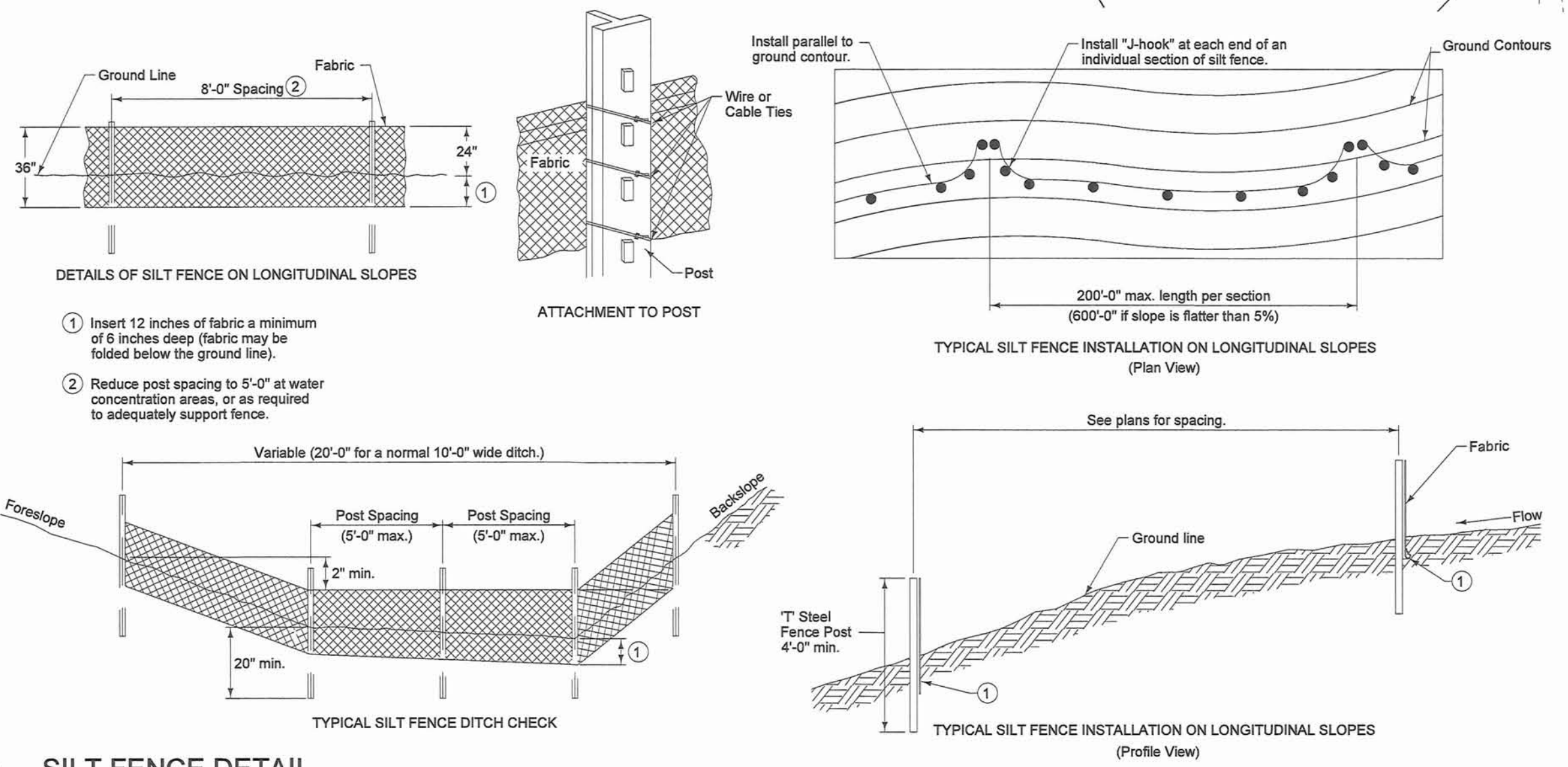
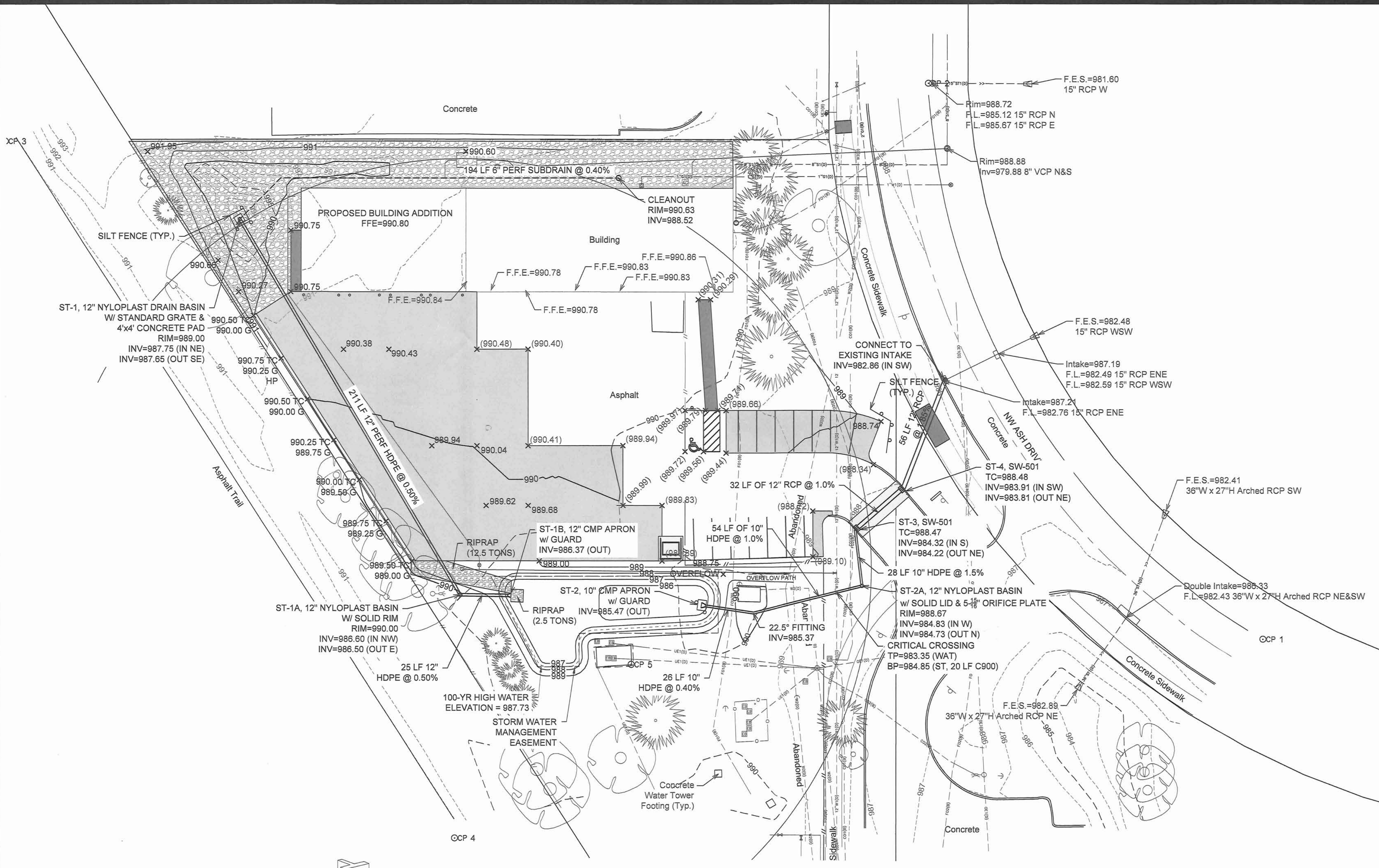
Project No: 119.0958.01
Sheet C201

ANKENY, IOWA
2727 S.W. SNYDER BLVD
ANKENY, IOWA 50023
515-964-2020 | www.snyder-associates.com

ANKENY PARKS MAINTENANCE FACILITY IMPROVEMENTS
DIMENSION, UTILITY, & PLANTING PLAN
SNYDER & ASSOCIATES, INC.

SNYDER & ASSOCIATES

Project No: 119.0958.01
Sheet C201



GRADING/STORM SEWER NOTES

- 1. CONTRACTOR TO STRIP AND STOCKPILE TOPSOIL ON ALL AREAS TO BE CUT OR FILLED. RESPREAD TO MINIMUM 6" DEPTH TO FINISH GRADES.
- 2. ANY EXCESS CUT TO BE SPREAD ON SITE AS DIRECTED BY ENGINEER DURING CONSTRUCTION. PLACE TOPSOIL OVER ALL AREAS DISTURBED.
- 3. ALL DRAINAGE SWALES AND SLOPES 5 TO 1 OR GREATER TO BE SEEDED USING COMMERCIALY AVAILABLE EROSION CONTROL SEED. MIXTURE APPLIED AT RATE RECOMMENDED BY SUPPLIER.
- 4. EROSION CONTROL: SEED THE SITE AFTER ROUGH GRADING HAS BEEN COMPLETED. PLACE SILT FENCE AND MAINTAIN IN PROBLEM AREAS AFTER GROUND COVER HAS BEEN ESTABLISHED. COMPLY WITH EROSION CONTROL LAW.
- 5. ALL PROPOSED SPOTS ARE SHOWN AS TOP OF SLAB ELEVATIONS.
- 6. HDPE SUBDRAIN TO BE BEDDED IN GRANULAR SUBBASE UNDER PROPOSED HMA. SLOPE SUBGRADE TO PROPOSED SUBDRAIN UNDER PROPOSED HMA.
- 7. THE POST-CONSTRUCTION VOLUME OF THE DETENTION BASIN WILL NEED TO BE VERIFIED AND PROVIDED TO THE CITY BEFORE A FINAL CERTIFICATE OF OCCUPANCY (CO) CAN BE ISSUED.
- 8. CONSTRUCT STORM SEWER WITH PVC C800 MATERIAL FOR 20 LF OVER WATER MAIN.
- 9. CONTRACTOR TO PROVIDE AND INSTALL 200 LF OF WATTLES. COORDINATE LOCATION WITH CITY PRIOR TO INSTALL. OWNER TO PROVIDE AND INSTALL INLET PROTECTION DEVICES ON SW-501 STRUCTURES.

POLLUTION PREVENTION NOTES

A. POLLUTION PREVENTION AND EROSION PROTECTION

- 1. CODE COMPLIANCE: THE CONTRACTOR IS RESPONSIBLE FOR COMPLIANCE WITH ALL POTENTIAL POLLUTION AND SOIL EROSION CONTROL REQUIREMENTS OF THE IOWA CODE, THE IOWA DEPARTMENT OF NATURAL RESOURCES (IDNR) NPDES PERMIT, THE U.S. CLEAN WATER ACT AND ANY LOCAL ORDINANCES. THE CONTRACTOR SHALL TAKE ALL NECESSARY STEPS TO PROTECT AGAINST EROSION AND POLLUTION FROM THIS PROJECT SITE AND ALL OFF-SITE BORROW OR DEPOSIT AREAS DURING PERFORMANCE OR AS A RESULT OF PERFORMANCE.
- 2. DAMAGE CLAIMS: THE CONTRACTOR WILL HOLD THE OWNER AND ARCHITECT / ENGINEER HARMLESS FROM ANY AND ALL CLAIMS OF ANY TYPE WHATSOEVER RESULTING FROM DAMAGES TO ADJOINING PUBLIC OR PRIVATE PROPERTY, INCLUDING REASONABLE ATTORNEY FEES INCURRED TO OWNER. FURTHER, IF THE CONTRACTOR FAILS TO TAKE NECESSARY STEPS TO PROMPTLY REMOVE EARTH SEDIMENTATION OR DEBRIS WHICH COMES ONTO ADJOINING PUBLIC OR PRIVATE PROPERTY, THE OWNER MAY, BUT NOT OBLIGED TO, REMOVE SUCH ITEMS AND DEDUCT THE COST THEREOF FROM AMOUNTS DUE TO THE CONTRACTOR.

B. STORM WATER DISCHARGE PERMIT

- 1. THIS PROJECT REQUIRES COVERAGE UNDER THE NPDES GENERAL PERMIT NO. 2 FOR STORM WATER DISCHARGES ASSOCIATED WITH CONSTRUCTION ACTIVITIES FROM THE IDNR, AS REQUIRED BY THE ENVIRONMENTAL PROTECTION AGENCY (EPA). THE GENERAL CONTRACTOR AND ALL SUBCONTRACTORS ARE RESPONSIBLE FOR COMPLIANCE WITH AND FULFILLMENT OF ALL REQUIREMENTS OF THE NPDES GENERAL PERMIT NO. 2 AS SPECIFIED IN THE CONTRACT DOCUMENTS.
- 2. ALL DOCUMENTS RELATED TO THE STORM WATER DISCHARGE PERMIT, INCLUDING, BUT NOT LIMITED TO, THE NOTICE OF INTENT, PROOF OF PUBLICATIONS, DISCHARGE AUTHORIZATION LETTER, CURRENT SWPPP, SITE INSPECTION LOG, AND OTHER ITEMS, SHALL BE KEPT ON SITE AT ALL TIMES AND MUST BE PRESENTED TO ANY JURISDICTIONAL AGENCIES UPON REQUEST. FAILURE TO COMPLY WITH THE NPDES PERMIT REQUIREMENTS IS A VIOLATION OF THE CLEAN WATER ACT AND THE CODE OF IOWA.
- 3. A "NOTICE OF DISCONTINUATION" MUST BE FILED WITH THE IDNR UPON FINAL STABILIZATION OF THE DISTURBED SITE AND REMOVAL OF ALL TEMPORARY EROSION CONTROL MEASURES. ALL PLANS, INSPECTION REPORTS, AND OTHER DOCUMENTS MUST BE RETAINED FOR A PERIOD OF THREE YEARS AFTER PROJECT COMPLETION. THE CONTRACTOR SHALL RETAIN A RECORD COPY AND PROVIDE THE ORIGINAL DOCUMENTS TO THE OWNER UPON PROJECT ACCEPTANCE AND/OR SUBMITTAL OF THE NOTICE OF DISCONTINUATION.

C. POLLUTION PREVENTION PLAN

- 1. THE STORM WATER POLLUTION PREVENTION PLAN (SWPPP) IS A SEPARATE DOCUMENT IN ADDITION TO THESE PLAN DRAWINGS. THE CONTRACTOR SHOULD REFER TO THE SWPPP FOR ADDITIONAL REQUIREMENTS AND MODIFICATIONS TO THE POLLUTION PREVENTION PLAN MADE DURING CONSTRUCTION.
- 2. THE SWPPP ILLUSTRATES GENERAL MEASURES AND BEST MANAGEMENT PRACTICES (BMP) FOR COMPLIANCE WITH THE PROJECT'S NPDES PERMIT COVERAGE. ALL BMP'S AND EROSION CONTROL MEASURES REQUIRED AS A RESULT OF CONSTRUCTION ACTIVITIES ARE THE RESPONSIBILITY OF THE CONTRACTOR TO IDENTIFY, NOTE AND IMPLEMENT. ADDITIONAL BMP'S FROM THOSE SHOWN ON THE PLAN MAY BE REQUIRED.
- 3. THE SWPPP AND SITE MAP SHOULD BE EXPEDITIOUSLY REVISED TO REFLECT CONSTRUCTION PROGRESS AND CHANGES AT THE PROJECT SITE.
- 4. THE CONTRACTOR IS RESPONSIBLE FOR COMPLIANCE WITH ALL REQUIREMENTS OF THE GENERAL PERMIT AND SWPPP, INCLUDING, BUT NOT LIMITED TO, THE FOLLOWING BMP'S UNLESS INFEASIBLE OR NOT APPLICABLE:
 - a. UTILIZE OUTLET STRUCTURES THAT WITHDRAW WATER FROM THE SURFACE WHEN DISCHARGING FROM BASINS, PROVIDE AND MAINTAIN NATURAL BUFFERS AROUND SURFACE WATERS, DIRECT STORM WATER TO VEGETATED AREAS TO INCREASE SEDIMENT REMOVAL AND MAXIMIZE STORM WATER INFILTRATION, AND MINIMIZE SOIL COMPACTION.
 - b. INSTALL PERIMETER AND FINAL SEDIMENT CONTROL MEASURES SUCH AS SILT BARRIERS, DITCH CHECKS, DIVERSION BERMS, OR SEDIMENTATION BASINS DOWNSTREAM OF SOIL DISTURBING ACTIVITIES PRIOR TO SITE CLEARING AND GRADING OPERATIONS.
 - c. PRESERVE EXISTING VEGETATION IN AREAS NOT NEEDED FOR CONSTRUCTION AND LIMIT TO A MINIMUM THE TOTAL AREA DISTURBED BY CONSTRUCTION OPERATIONS AT ANY TIME.
 - d. MAINTAIN ALL TEMPORARY AND PERMANENT EROSION CONTROL MEASURES IN WORKING ORDER, INCLUDING CLEANING, REPAIRING, REPLACEMENT, AND SEDIMENT REMOVAL THROUGHOUT THE PERMIT PERIOD. CLEAN OR REPLACE SILT CONTROL DEVICES WHEN THE MEASURES HAVE LOST 50% OF THEIR ORIGINAL CAPACITY.
 - e. INSPECT THE PROJECT AREA AND CONTROL DEVICES (BY QUALIFIED PERSONNEL ASSIGNED BY THE CONTRACTOR) EVERY SEVEN CALENDAR DAYS. RECORD THE FINDINGS OF THESE INSPECTIONS AND ANY RESULTING ACTIONS IN THE SWPPP WITH A COPY SUBMITTED WEEKLY TO THE OWNER OR ENGINEER DURING CONSTRUCTION. REVISE THE SWPPP AND IMPLEMENT ANY RECOMMENDED MEASURES WITHIN 7 DAYS.
 - f. PREVENT ACCUMULATION OF EARTH AND DEBRIS FROM CONSTRUCTION ACTIVITIES ON ADJOINING PUBLIC OR PRIVATE PROPERTIES, INCLUDING STREETS, DRIVEWAYS, SIDEWALKS, DRAINAGEWAYS, OR UNDERGROUND SEWERS. REMOVE ANY ACCUMULATION OF EARTH OR DEBRIS IMMEDIATELY AND TAKE REMEDIAL ACTIONS FOR FUTURE PREVENTION.
 - g. INSTALL NECESSARY CONTROL MEASURES SUCH AS SILT BARRIERS, EROSION CONTROL MATS, MULCH, DITCH CHECKS OR RIPRAP AS SOON AS AREAS REACH THEIR FINAL GRADES AND AS CONSTRUCTION OPERATIONS PROGRESS TO ENSURE CONTINUOUS RUNOFF CONTROL. PROVIDE INLET AND OUTLET CONTROL MEASURES AS SOON AS STORM SEWERS ARE INSTALLED.
 - h. RESPREAD A MINIMUM OF 6 INCHES OF TOPSOIL (INCLUDING TOPSOIL FOUND IN SOD) ON ALL DISTURBED AREAS, EXCEPT WHERE PAVEMENT, BUILDINGS OR OTHER IMPROVEMENTS ARE LOCATED.
 - i. STABILIZE UNDEVELOPED, DISTURBED AREAS WITH MULCH, TEMPORARY SEED MIX, PERMANENT SEED MIX, SOD, OR PAVEMENT IMMEDIATELY AS SOON AS POSSIBLE UPON COMPLETION OR DELAY OF GRADING OPERATIONS. INITIATE STABILIZATION MEASURES IMMEDIATELY AFTER CONSTRUCTION ACTIVITY IS FINALLY COMPLETED OR TEMPORARILY CEASED ON ANY PORTION OF THE SITE AND WHICH WILL NOT RESUME FOR A PERIOD EXCEEDING 14 CALENDAR DAYS.
 - j. COORDINATE LOCATIONS OF STAGING AREAS WITH THE OWNER AND RECORD IN THE SWPPP. UNLESS NOTED OTHERWISE, STAGING AREAS SHOULD CONTAIN THE FOLLOWING: JOB TRAILERS, FUELING / VEHICLE MAINTENANCE AREA, TEMPORARY SANITARY FACILITIES, MATERIALS STORAGE, AND CONCRETE WASHOUT FACILITY. CONTROL RUNOFF FROM STAGING AREAS WITH DIVERSION BERMS AND/OR SILT BARRIERS AND DIRECT TO A SEDIMENT BASIN OR OTHER CONTROL DEVICE WHERE POSSIBLE. CONCRETE WASHOUT MUST BE CONTAINED ONSITE.
 - k. REMOVE ALL TEMPORARY EROSION CONTROL MEASURES AND SITE WASTE PRIOR TO FILING OF THE "NOTICE OF DISCONTINUATION".

ANKENY PARKS MAINTENANCE FACILITY IMPROVEMENTS

GRADING, STORM SEWER, & EROSION CONTROL PLAN

SNYDER & ASSOCIATES, INC.

SNYDER & ASSOCIATES

ANKENY, IOWA

2727 S.W. SNYDER BLVD
ANKENY, IOWA 50023
515-964-2020 | www.snyder-associates.com

1	REVISION	DATE	BY
1	REVISED PER CITY COMMENTS	01/06/20	LFG

Project No: 119.0958.01

Sheet C300