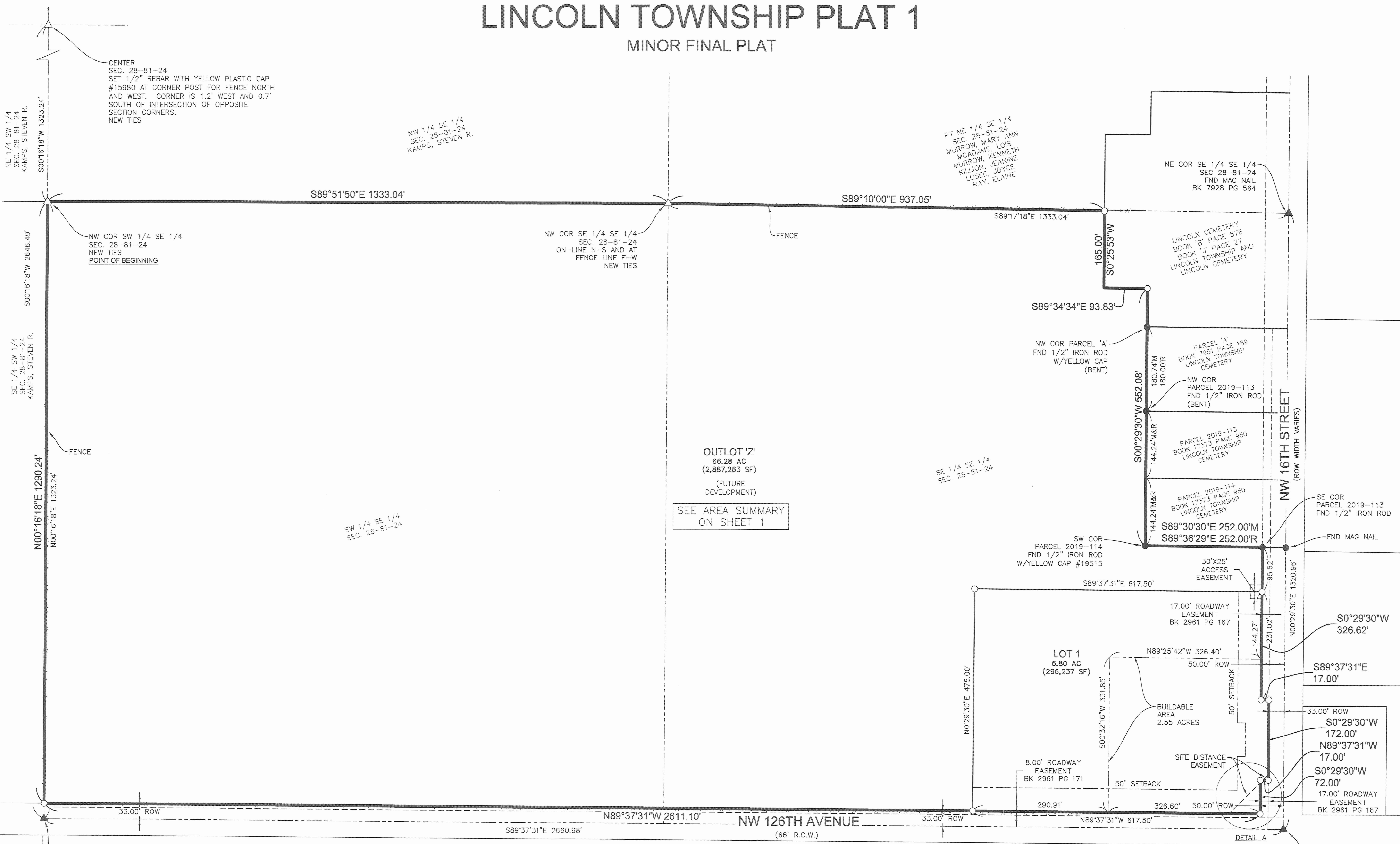






LINCOLN TOWNSHIP PLAT 1  
MINOR FINAL PLAT



**LEGEND**

SECTION CORNER AS NOTED	FOUND	SET
1/2" REBAR, YELLOW PLASTIC CAP #15980 (UNLESS OTHERWISE NOTED)	▲	△
MEASURED BEARING & DISTANCE	●	○
RECORDED BEARING & DISTANCE	M	
CENTERLINE	R	
SECTION LINE	---	
EASEMENT LINE	- - -	
BUILDING SETBACK LINE	---	
PLAT BOUNDARY	---	

**FOUND SET**

SECTION CORNER AS NOTED  
1/2" REBAR, YELLOW PLASTIC CAP #15980  
(UNLESS OTHERWISE NOTED)

MEASURED BEARING & DISTANCE  
RECORDED BEARING & DISTANCE

CENTERLINE  
SECTION LINE  
EASEMENT LINE  
BUILDING SETBACK LINE  
PLAT BOUNDARY

**SCALE**

0' 50' 100' 200'

1" = 100' (FULL SIZE)

**DETAIL A**

LOT 1  
SITE DISTANCE EASEMENT  
NW 126TH AVE.  
NW 16TH ST

FILE: I:\2024\20240319\20240319-PLAT 1-1.DWG  
DATE: 03/19/2024 8:19 AM  
PLOTTER: HP  
PLOT BY: MKE  
TECH: ENG

DATE					
REVISIONS					
ADDED NOTE REGARDING ROW	5/4/20				
SECOND SUBMITTAL	04/17/20				
PREPARED	03/30/20				

3405 S.E. CROSSROADS DRIVE, SUITE G  
GRIMES, IOWA 50111  
PHONE: (515) 369-4400 FAX: (515) 369-4410

ENGINEER: TECH: EW REVIEW:

CIVIL DESIGN ADVANTAGE  
POLK COUNTY, IOWA

**LINCOLN TOWNSHIP PLAT 1**  
**MINOR FINAL PLAT**

**2**  
**2**

2003.136