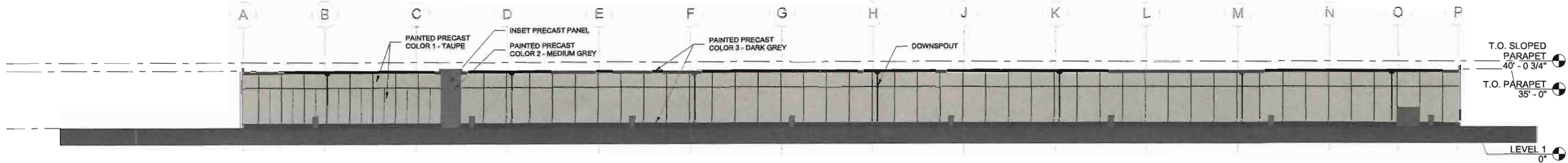
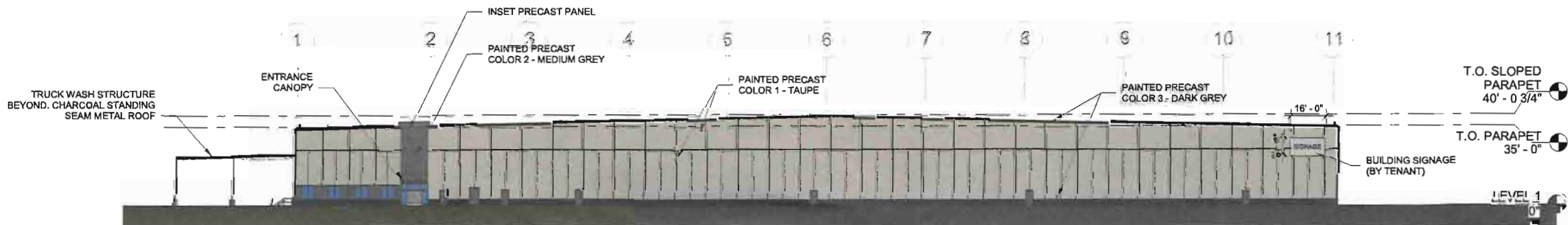


PRECAST COLOR 1	22,200 SF	86%
PRECAST COLOR 2	520 SF	2%
PRECAST COLOR 3	3,075 SF	12%
ALUMINUM FRAMED GLAZING	NA	NA



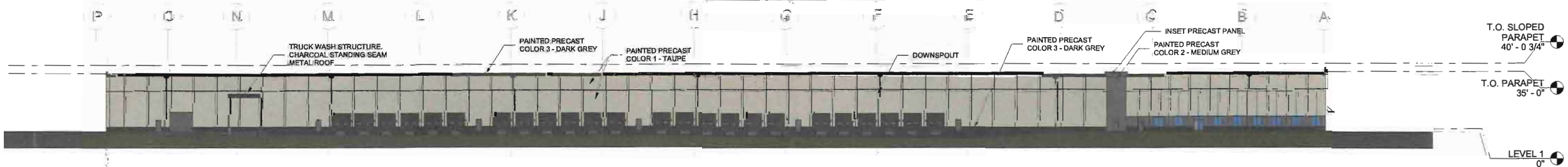
1 ELEVATION - NORTH
A300 1/32" = 1'-0"

PRECAST COLOR 1	14,950 SF	84%
PRECAST COLOR 2	540 SF	3%
PRECAST COLOR 3	1,820 SF	10%
ALUMINUM FRAMED GLAZING	280 SF	3%



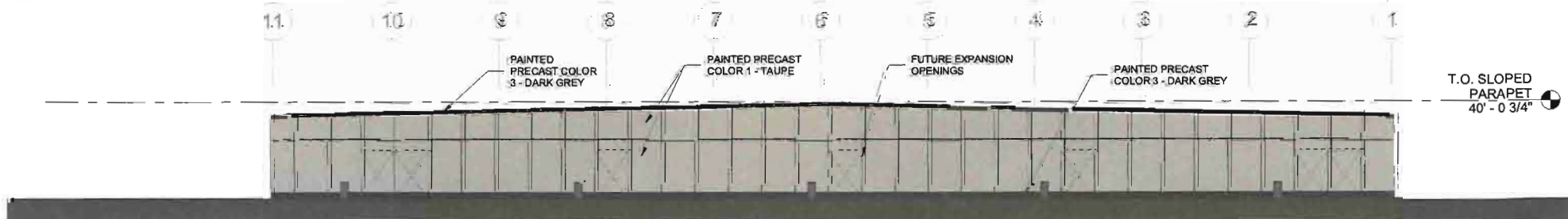
2 ELEVATION - EAST
A300 1/32" = 1'-0"

PRECAST COLOR 1	19,240 SF	83%
PRECAST COLOR 2	900 SF	4%
PRECAST COLOR 3	2,330 SF	10%
ALUMINUM FRAMED GLAZING	650 SF	3%



3 ELEVATION - SOUTH
A300 1/32" = 1'-0"

PRECAST COLOR 1	15,560 SF	88%
PRECAST COLOR 2	NA	NA
PRECAST COLOR 3	2,000 SF	12%
ALUMINUM FRAMED GLAZING	NA	NA



4 ELEVATION - WEST
A300 1/32" = 1'-0"



RYAN A+E, INC.
533 South Third Street, Suite 100
Minneapolis, MN 55415
612-492-4000 tel
612-492-3000 fax

WWW.RYANCOMPANIES.COM

OWNER

CONSULTANTS



THE WALDINGER CORPORATION
200 BELLEVUE
SUITE 2000
MINNEAPOLIS, MN 55415



KEY PLAN

PROJECT INFORMATION

5800 SE Delaware
Avenue
Ankeny Iowa

Name

REGISTRATION NO.
Number

DATE
Date

© 2018 RYAN A+E, INC.

DRAWN BY
Author

CHECKED BY
Checker

JOB NO.
700-880

DATE
4/06/2020

ISSUE RECORD		
ISSUE #	DATE	DESCRIPTION
1	05/01/2020	City Submittal
2	05/20/2020	DESIGN DEVELOPMENT
3	06/02/2020	DD Addendum #1

PRELIMINARY
NOT FOR CONSTRUCTION

PRELIMINARY
DATE

EXTERIOR
ELEVATIONS

A.300

GENERAL NOTES

- REFER TO STRUCTURAL DRAWINGS FOR SLAB ON GRADE CONSTRUCTION, CONTROL AND ISOLATION JOINTS.
- COORDINATE UNDERGROUND AND UNDER SLAB UTILITIES WITH RELEVANT TRADES PRIOR TO SLAB POUR. COORDINATE ALL SLEEVES THROUGH UNDER FOOTING AND FOUNDATION WITH STRUCTURAL ENGINEER.
- ALL WALLS TO ROOF DECK TO BE CONSTRUCTED TO ACCOMMODATE DEFLECTION OF ROOF STRUCTURE.
- REFER TO STRUCTURAL ENGINEERING DRAWINGS FOR ADDITIONAL INFORMATION PERTAINING TO STRUCTURAL COMPONENT SIZES, LOCATIONS, CONFIGURATIONS, AND CAPACITIES.
- STAIR SUPPLIER SHALL BE RESPONSIBLE FOR CODE COMPLIANCE AND STRUCTURAL INTEGRITY FOR ALL MATERIALS FURNISHED. PROVIDE FIRE EXTINGUISHERS OF SIZE AND TYPE AND LOCATION AS REQUIRED BY THE FIRE MARSHALL.
- ALL EQUIPMENT SHOWN FOR REFERENCE ONLY. REFER TO MECHANICAL AND ELECTRICAL DRAWINGS FOR EXACT EQUIPMENT, SIZE AND LOCATION.

DIMENSIONS:

- SUBCONTRACTOR TO VERIFY DIMENSIONS AND CONDITIONS SHOWN ON THESE DRAWINGS. ANY OMISSIONS, DISCREPANCIES, OR CONFLICTS MUST BE REPORTED TO THE DESIGN BUILD IMMEDIATELY.
- DRAWINGS SHOULD NOT BE SCALED - DIMENSIONS GOVERN. LARGE SCALE DRAWINGS GOVERN OVER SMALL SCALE DRAWINGS.
- DIMENSIONS AT EXTERIOR WALLS ARE TAKEN TO GRIDLINE OR UNLESS NOTED OTHERWISE.
- DIMENSIONS AT INTERIOR WALLS ARE TAKEN TO FACE OF GYP UNLESS NOTED OTHERWISE.

BUILDING SYSTEMS:

SEE SHEET A600 FOR EXTERIOR BUILDING SYSTEMS AND WALL TYPE INFORMATION.

