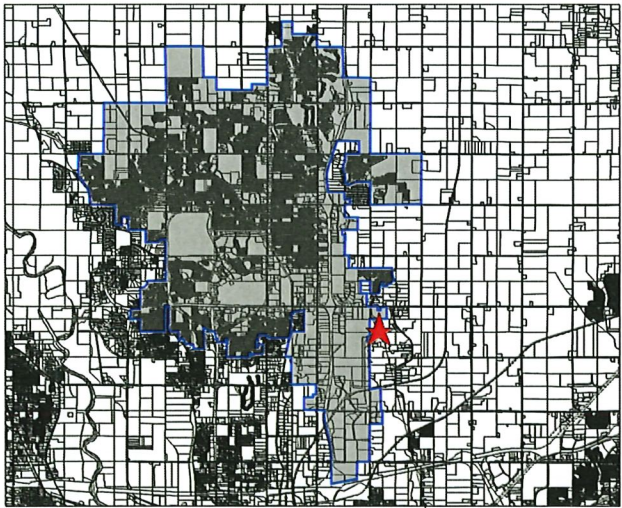


Annexation Exhibit

FOR
ANKENY RMJ
Ankeny, Iowa



Vicinity Sketch

SUBJECT PROPERTY AREA

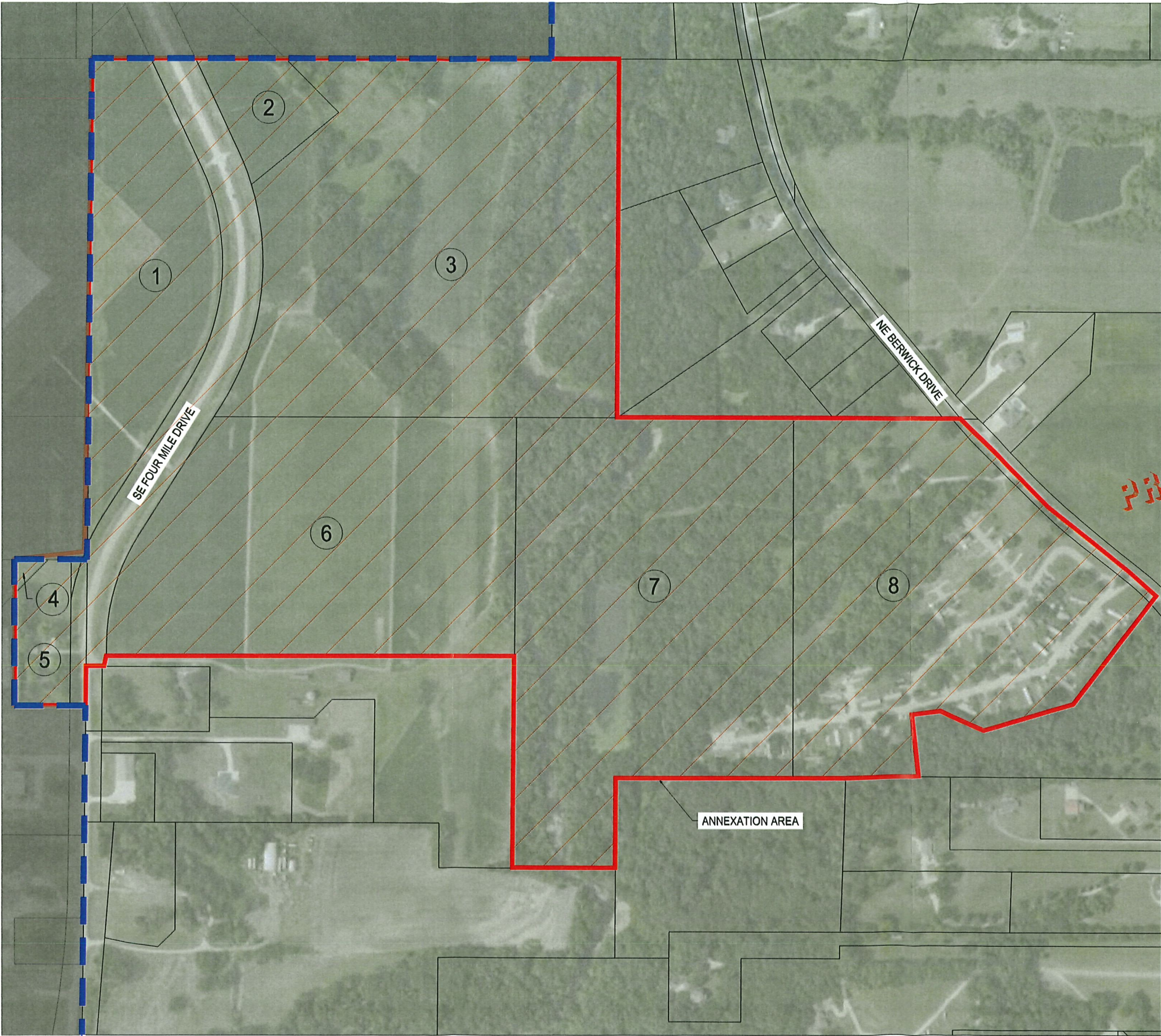
RECEIVED

MAR 30 2022

CITY OF ANKENY

ANNEXATION TABLE

Parcel Number	Name of Property Owner	Parcel Number
1	Polk County Aviation Authority	8023-32-152-001
2	Polk County Aviation Authority	8023-32-151-002
3	ATI Ankeny Industrial LLC	8023-32-151-003
4	Polk County Aviation Authority	8023-31-400-020
5	Lloyd D Linn	8023-31-400-033
6	ATI Ankeny Industrial LLC	8023-32-300-011
7	Tyler Investmany Company Inc	8023-32-300-005
8	Tyler Investmany Company Inc	8023-32-400-001



building strong communities.

1360 NW 121ST. Street
Clive, Iowa 50325
515-964-1229
fax 515-964-2370

NOTICE:
McClure Engineering Company waives any and all responsibility and liability for problems which arise from failure to follow these Plans, Specifications, and the engineering advice they convey, or for problems which arise from failure to obtain and/or follow the engineers guidance with respect to any errors, omissions, inconsistencies, ambiguities, or conflicts which are alleged.

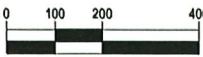
COPYRIGHT:
Copyright and property rights in these documents are expressly reserved by McClure Engineering Company. No reproductions, changes, or copies in any manner shall be made without obtaining prior written consent from McClure Engineering Company.

PRELIMINARY

ANNEXATION EXHIBIT



NORTH



GRAPHIC SCALE

ANKENY RMJ SITE PLAN

ANKENY, IOWA

TBD

AUGUST 31, 2021

REVISIONS

•
•
•
•

ENGINEER
T. SMITH

CHECKED BY
C. SMITH

DRAWING NO.
1

DRAWN BY
TLS

FIELD BOOK NO.
•

SHEET NO.
1 / 1