

DESIGN CALCULATIONS

FOR 7 BREW FACADE IN ANKENY, IA

BUILDING PERSPECTIVES

PERSPECTIVE OF POTENTIAL BUILDING



PERSPECTIVE OF POTENTIAL BUILDING



MATERIALS PERCENTAGES

SOUTH ELEVATION



SOUTH ELEVATION

TOTAL FACADE AREA: 314.05sqft.

GREY BRICK - 125.54 sqft.

GLAZING - 67.28 sqft.

BLUE METAL FASCIA - 46.15 sqft.

BLACK BRICK - 46.89 sqft.

SIGNAGE - 28.19 sqft.

* Calculations based on area highlighted in yellow.



FACADE PERCENTAGES:

PRIMARY MATERIALS: 76%

SECONDARY MATERIALS: 24%

WEST FACADE



WEST FACADE

TOTAL FACADE AREA: 541.58 sqft.

GREY BRICK: 227.91 sqft

GLAZING: 112.23 sqft

BLACK BRICK: 94.3 sqft

BLUE METAL FASCIA: 66.91 sqft

SIGNAGE: 34.23 sqft

METAL TRIM: 6 sqft

* Calculations based on area highlighted in yellow.



FACADE PERCENTAGES:

PRIMARY MATERIALS: 80%

SECONDARY MATERIALS: 20%

NORTH FACADE



"NORTH FACADE"

TOTAL FACADE AREA: 324.12 sqft

BLACK BRICK - 130.61 sqft

ROOF PANEL - 92.91 sqft

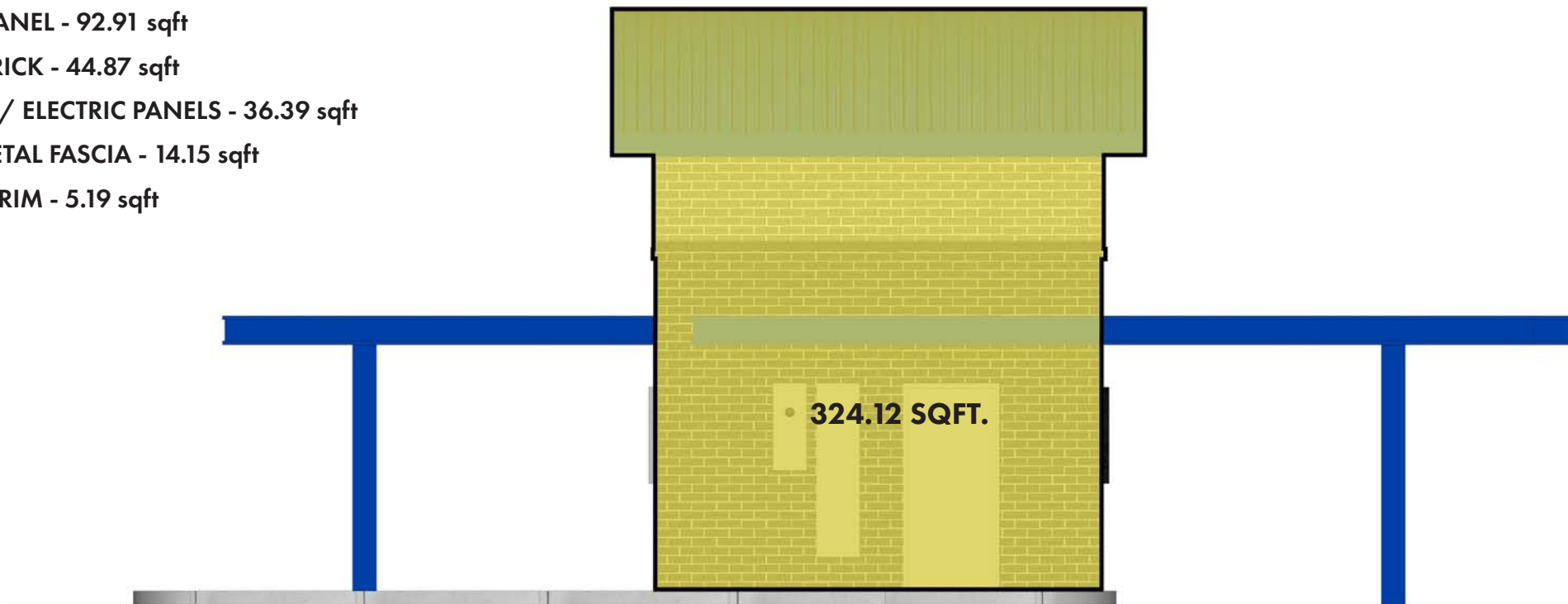
GREY BRICK - 44.87 sqft

DOORS / ELECTRIC PANELS - 36.39 sqft

BLUE METAL FASCIA - 14.15 sqft

METAL TRIM - 5.19 sqft

* Calculations based on area highlighted in yellow.



FACADE PERCENTAGES:

PRIMARY MATERIALS: 54%

SECONDARY MATERIALS: 46%

EAST FACADE



EAST FACADE

TOTAL FACADE AREA: 541.58 sqft.

GREY BRICK - 285.55 sqft

BLACK BRICK - 106.21 sqft

GLAZING - 55.14 sqft

SIGNAGE - 42.25 sqft

BLUE METAL FASCIA - 46.43 sqft

METAL TRIM - 6 sqft

* Calculations based on area highlighted in yellow.



FACADE PERCENTAGES:

PRIMARY MATERIALS: 83%

SECONDARY MATERIALS: 17%



CALCULATIONS:

TOTAL FACADE AREA:

314.05 sqft
 541.58 sqft
 324.12 sqft
 541.58 sqft
 +

1,721.33 sqft

MATERIAL PERCENTAGES:

PRIMARY MATERIALS: 75%

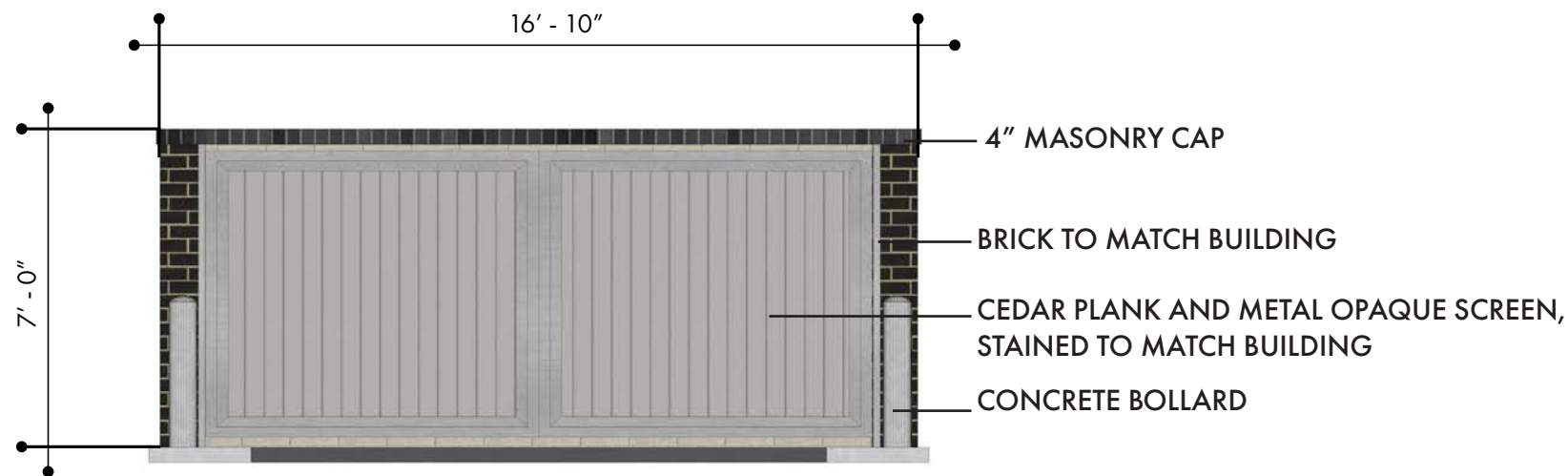
(BLACK BRICK, GREY BRICK, GLAZING)

SECONDARY MATERIALS: 25%

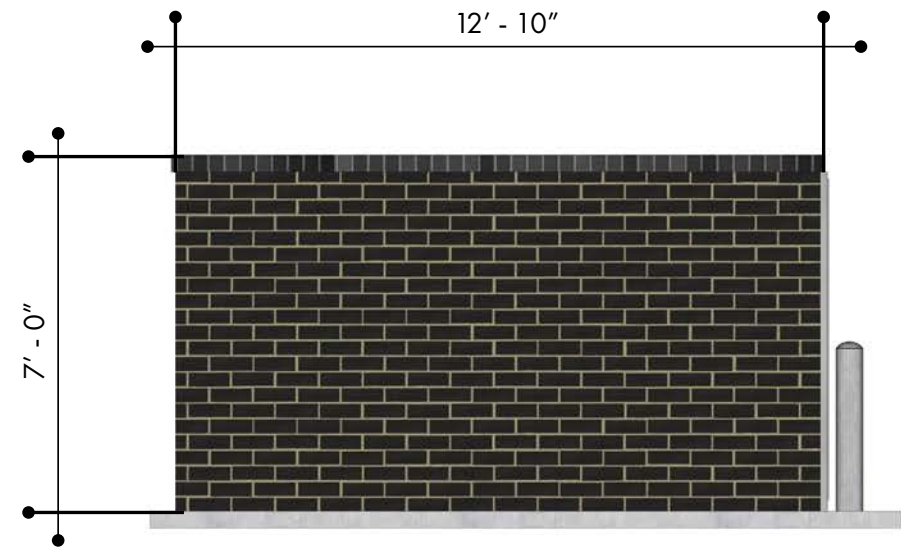
(BLUE METAL FASCIA, ROOF PANEL, SIGNAGE, ETC.)

TRASH ENCLOSURE

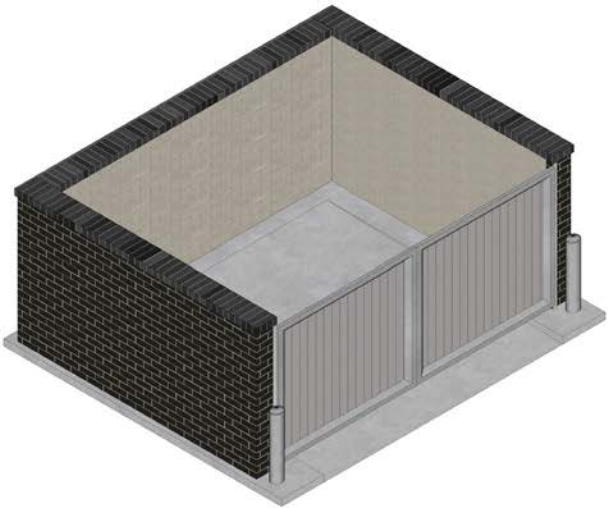
TRASH ENCLOSURE ELEVATIONS



"FRONT" ELEVATION



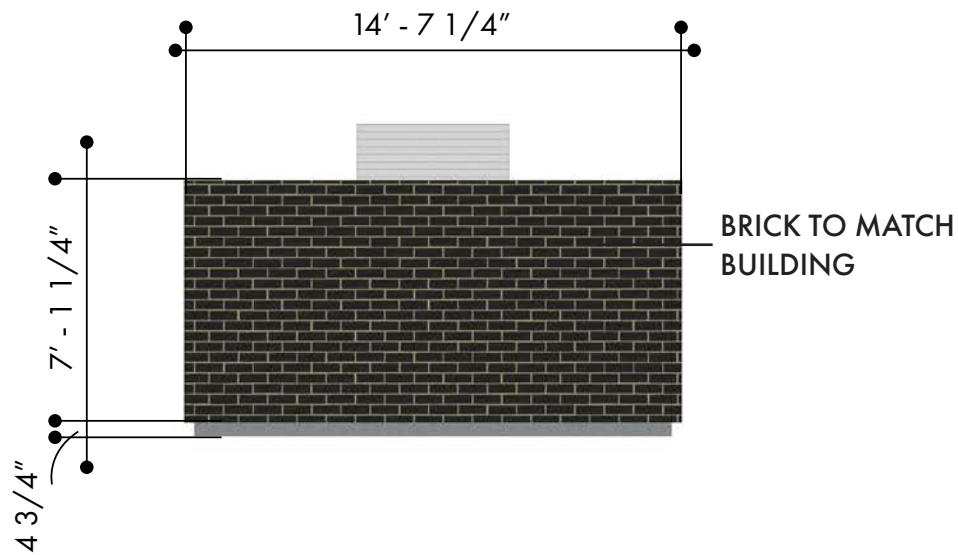
"SIDE" ELEVATION



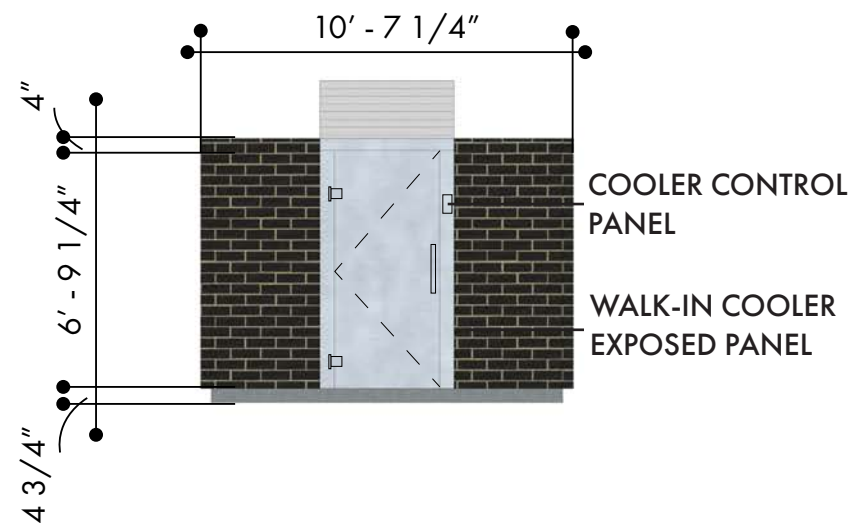
TRASH ENCLOSURE ISOMETRIC VIEW

WALK-IN COOLER

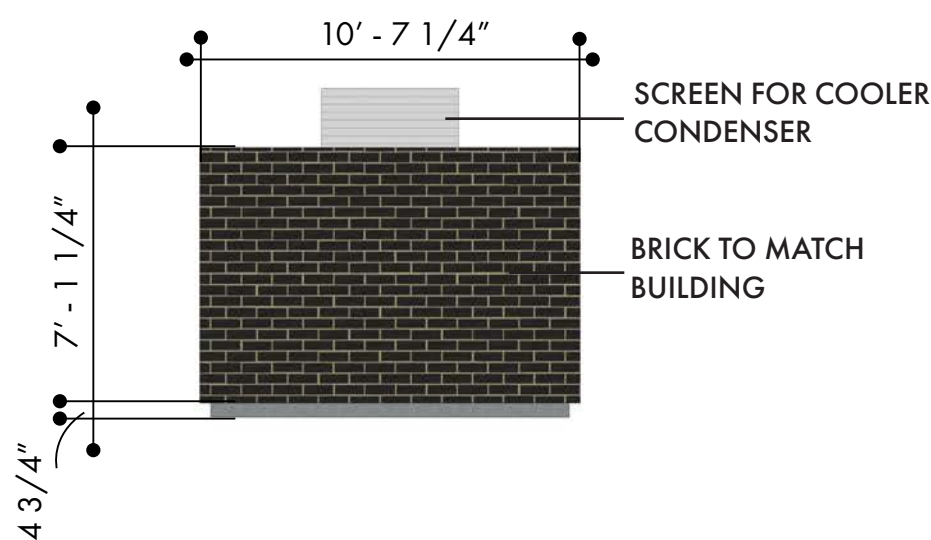
WALK-IN COOLER ELEVATIONS



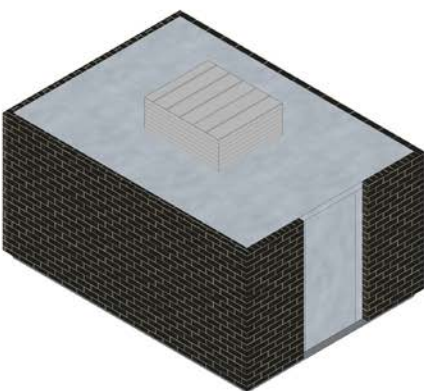
"SIDE" ELEVATION



"BACK" ELEVATION



"FRONT" ELEVATION



COOLER ISOMETRIC VIEW